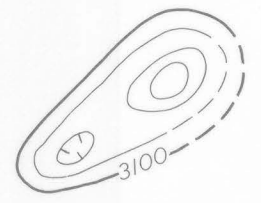


EXPLANATION



Magnetic contours

Showing total intensity magnetic field of the earth in gammas relative to arbitrary datum. Hachured to indicate closed areas of lower magnetic intensity; dashed where data are incomplete. Contour interval 20 gammas

Measured maximum or minimum intensity within closed high or closed low

Flight path

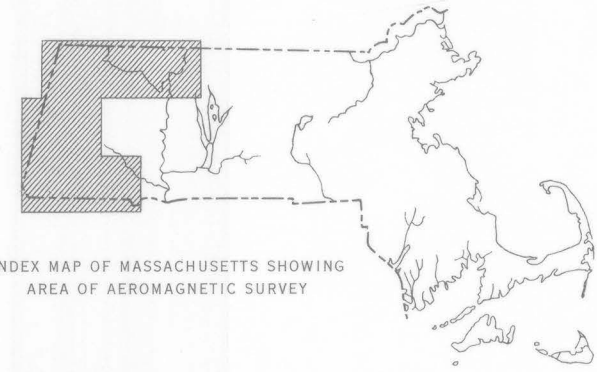
Showing location and spacing of data

NOTE

Aeromagnetic data are obtained and compiled along a continuous line, whereas ground magnetic surveys are made at separate points. Errors within the normal limits of any magnetic measurement may cause slight discrepancies between flight lines in an aeromagnetic map, which would be more obvious than similar discrepancies between points in a ground magnetic map. For this reason as much care should be exercised in evaluating magnetic features that appear as elongations along a single aeromagnetic traverse as in interpreting an anomaly indicated by a single ground station



INDEX MAP OF WESTERN MASSACHUSETTS SHOWING AEROMAGNETIC MAPS PUBLISHED BY THE U.S. GEOLOGICAL SURVEY AREA OF GP-537 SHADED



INDEX MAP OF MASSACHUSETTS SHOWING AREA OF AEROMAGNETIC SURVEY



Base by U.S. Geological Survey

Aeromagnetic survey flown at 500 feet above ground, 1963

AEROMAGNETIC MAP OF THE WORONOCO QUADRANGLE, HAMPDEN AND HAMPSHIRE COUNTIES, MASSACHUSETTS

By
G. R. Boynton, Peter Popenoe, and G. L. Zandle

SCALE 1:24 000

