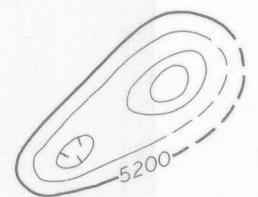


EXPLANATION



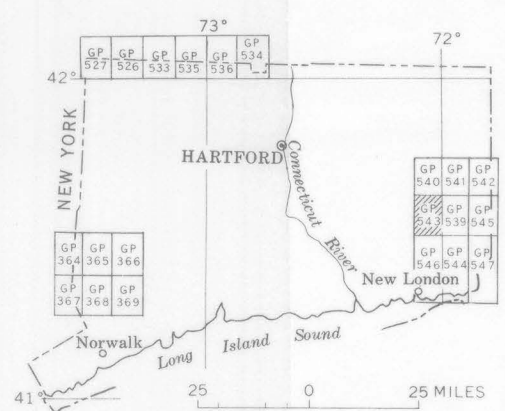
Magnetic contours  
Showing total intensity magnetic field of the earth in gammas relative to arbitrary datum. Hachured to indicate closed areas of lower magnetic intensity; dashed where data are incomplete. Contour interval is 20 gammas

Location of measured maximum or minimum intensity within closed high or closed low

Flight path  
Showing location and spacing of data

NOTE

Aeromagnetic data are obtained and compiled along a continuous line, whereas ground magnetic surveys are made at separate points. Errors within the normal limits of any magnetic measurement may cause slight discrepancies between flight lines in an aeromagnetic map, which would be more obvious than similar discrepancies between points in a ground magnetic map. For this reason as much care should be exercised in evaluating magnetic features that appear as elongations along a single aeromagnetic traverse as in interpreting an anomaly indicated by a single ground station



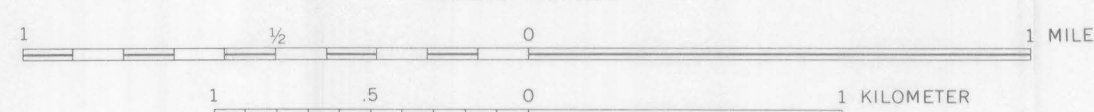
INDEX MAP OF CONNECTICUT SHOWING AEROMAGNETIC MAPS PUBLISHED BY THE U.S. GEOLOGICAL SURVEY. AREA OF GP-543 SHADED

GEOLOGIC MAPS FOR GP-543 ARE U.S. GEOLOGICAL SURVEY MAPS GO-144 AND GO-165

AEROMAGNETIC MAP OF THE NORWICH QUADRANGLE, NEW LONDON COUNTY, CONNECTICUT

By  
G. R. Boynton and C. W. Smith

SCALE 1:24 000



1965

For sale by U.S. Geological Survey, price 50 cents