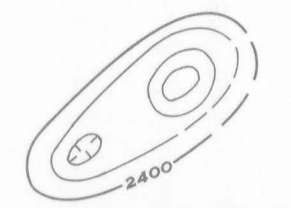


EXPLANATION



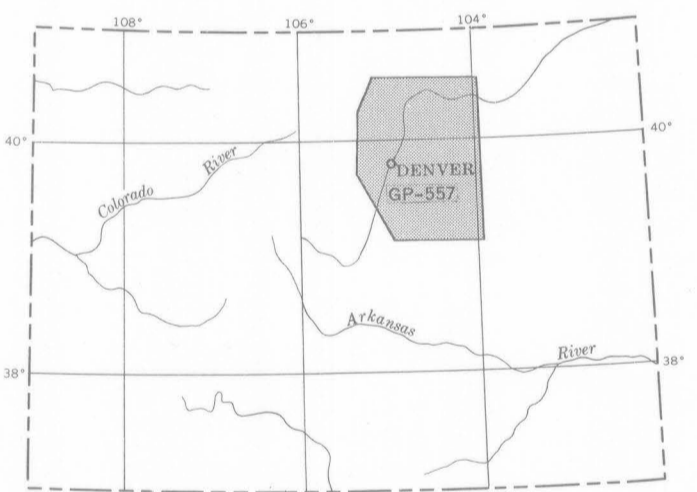
Magnetic contours showing total intensity magnetic field of the earth in gammas relative to arbitrary datum
Hachured to indicate closed areas of lower magnetic intensity; dashed where data are incomplete; contour interval 20 gammas

Location of measured maximum or minimum intensity within closed high or closed low

Flight path
Showing location and spacing of data

NOTE

Aeromagnetic data are obtained and compiled along a continuous line, whereas ground magnetic surveys are made at separate points. Errors within the normal limits of any magnetic measurement may cause slight discrepancies between flight lines in an aeromagnetic map, which would be more obvious than similar discrepancies between points in a ground magnetic map. For this reason as much care should be exercised in evaluating magnetic features that appear as elongations along a single aeromagnetic traverse as in interpreting an anomaly indicated by a single ground station



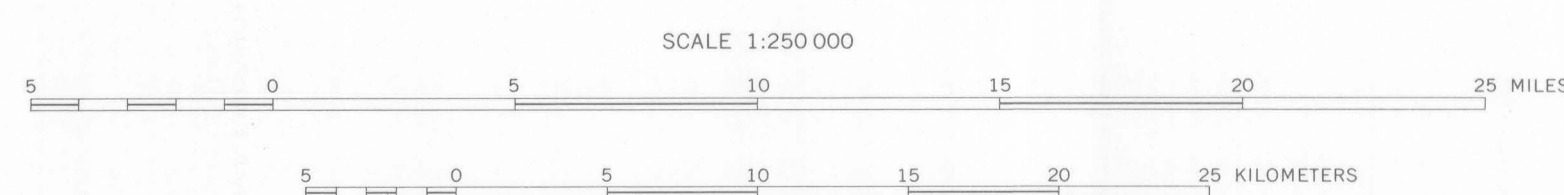
INDEX MAP OF COLORADO SHOWING LOCATION OF GP-557 AERORADIOACTIVITY MAP FOR AREA OF GP-557 IS GP-505

Base from Army Map Service 1:250,000 series: Grealey, 1961; Sterling, 1954; Limon, 1954; and Denver, 1953

INTERIOR—GEOLOGICAL SURVEY, WASHINGTON, D. C.—1966—066011
Aeromagnetic survey flown at 500 feet above ground, 1960

AEROMAGNETIC MAP OF THE DENVER AREA, COLORADO

By
A. J. Petty, J. L. Vargo, and F. C. Smith



1966