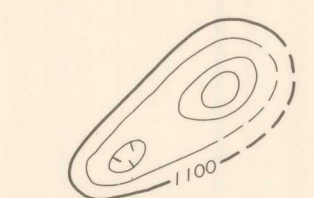


EXPLANATION



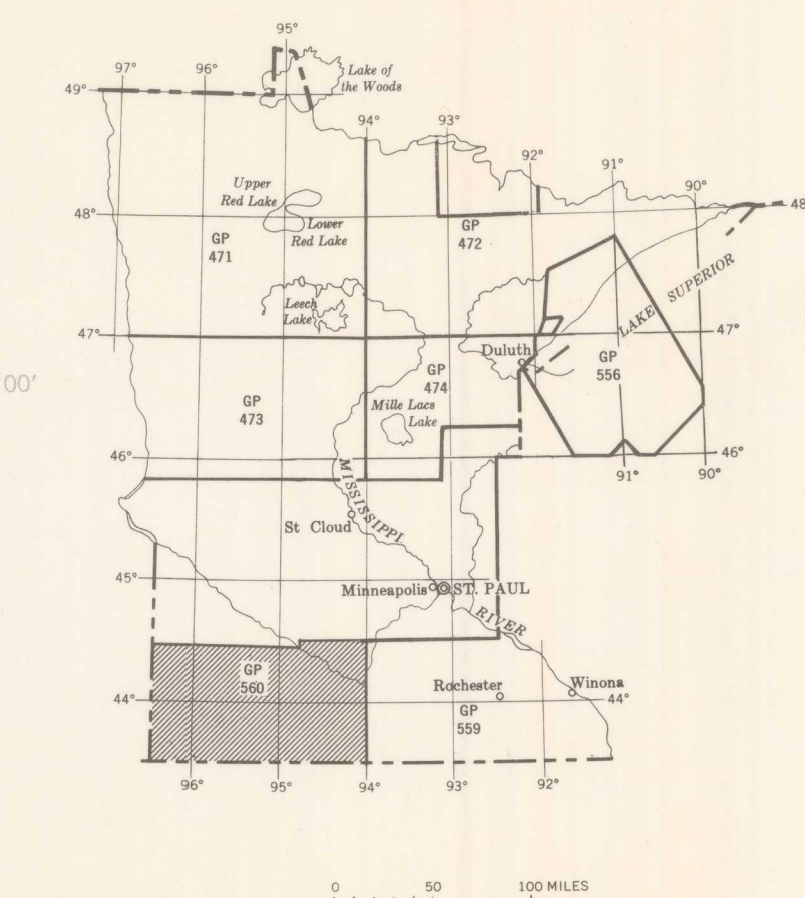
Magnetic contours
Showing total intensity magnetic field of the earth in gamma relative to arbitrary datum. Fractured to indicate closed areas of lower magnetic intensity, dashed where data are incomplete. Contour intervals 20 and 100 gamma

Location of measured maximum or minimum intensity within closed high or closed low

Flight path
Showing location and spacing of data

NOTE

Aeromagnetic data are obtained and compiled along a continuous line, whereas ground magnetic surveys are made at separate points. Errors within the normal limits of any magnetic measurement may cause slight discrepancies between flight lines in an aeromagnetic map, which would be more obvious than similar discrepancies between points in a ground magnetic map. For this reason as much care should be exercised in evaluating magnetic features that appear as elongations along a single aeromagnetic traverse as in interpreting an anomaly indicated by a single ground station



INDEX MAP OF MINNESOTA SHOWING 1:250,000 SCALE AEROMAGNETIC MAPS PUBLISHED BY THE U.S. GEOLOGICAL SURVEY IN THE WESTERN LAKE SUPERIOR AREA. AREA OF GP-560 SHADED

Base from Army Map Service 1:250,000 series: Fairmont, 1954; New Ulm, 1953; Sioux Falls, 1955; and Watertown, 1953

AEROMAGNETIC MAP OF SOUTHWESTERN MINNESOTA

By
P. W. Philbin and F. P. Gilbert

