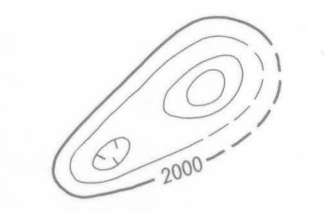


EXPLANATION

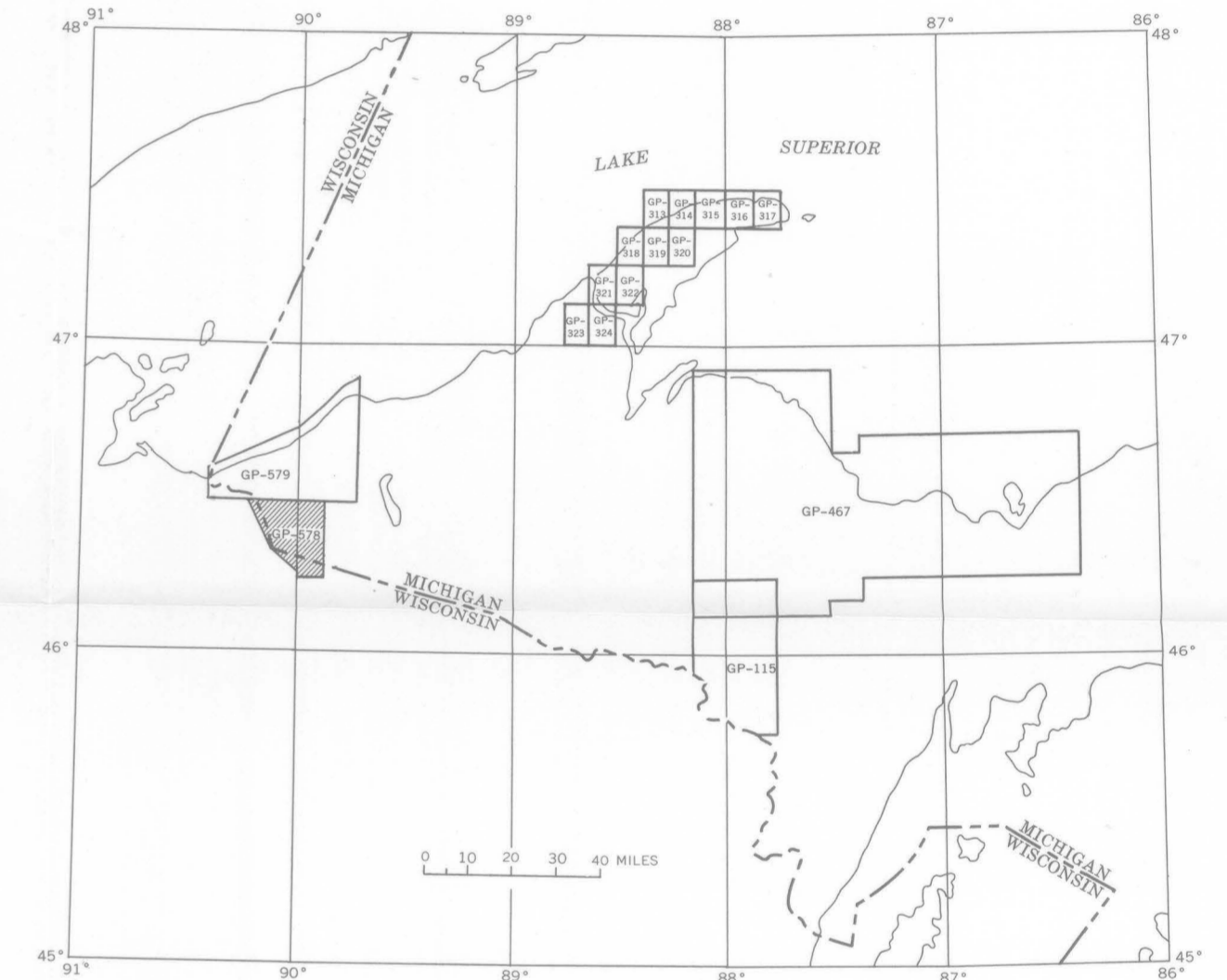


Magnetic contours  
Showing total intensity magnetic field of the earth in gammas relative to arbitrary datum. Hachured to indicate closed areas of lower magnetic intensity, dashed where data are incomplete. Contour intervals are 50 and 250 gammas

Location of measured maximum or minimum intensity within closed high or closed low

Flight path  
Showing location and spacing of data

NOTE  
Aeromagnetic data are obtained and compiled along a continuous line, whereas ground magnetic surveys are made of separate points. Errors within the normal limits of any magnetic measurement may cause slight discrepancies between flight lines in an aeromagnetic map, which would be more obvious than similar discrepancies between points in a ground magnetic map. For this reason as much care should be exercised in evaluating magnetic features that appear as elongations along a single aeromagnetic traverse as in interpreting an anomaly indicated by a single ground station



INDEX MAP SHOWING AEROMAGNETIC MAPS PUBLISHED BY THE U.S. GEOLOGICAL SURVEY IN THE MICHIGAN UPPER PENINSULA. AREA OF GP-578 SHADED

Base from U.S. Geological Survey topographic quadrangles: Ironwood, 1955, and Wakefield, 1955

INTERIOR—GEOLOGICAL SURVEY, WASHINGTON, D. C.—1966—G66292

Aeromagnetic survey flown 500 feet above ground, 1965

**AEROMAGNETIC MAP OF PARTS OF THE IRONWOOD AND WAKEFIELD QUADRANGLES  
GOGEBIC COUNTY, MICHIGAN AND IRON AND VILAS COUNTIES, WISCONSIN**

By  
**P. W. Philbin and J. L. Vargo**

SCALE 1:62 500

