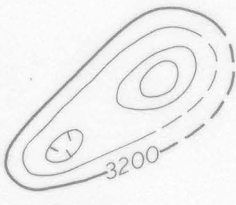


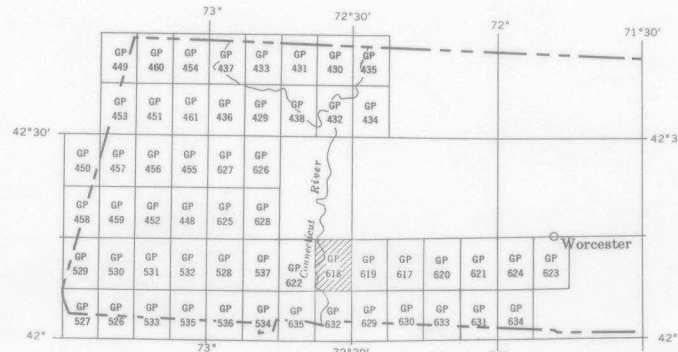
EXPLANATION



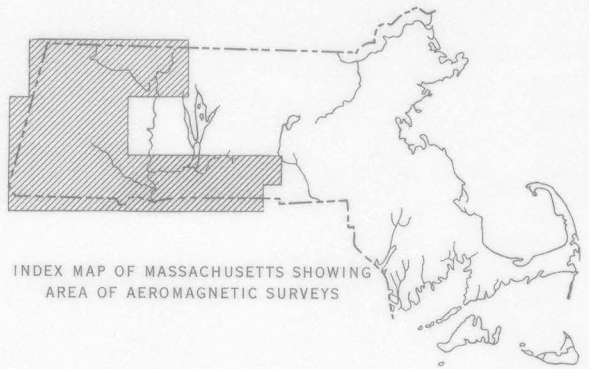
Magnetic contours
Showing total intensity magnetic field of the earth
in gammas relative to arbitrary datum. Hachured
to indicate closed areas of lower magnetic intensity,
dashed where data are incomplete. Contour
interval 20 gammas

Location of measured maximum or minimum
intensity within closed high or closed low

Flight path
Showing location and spacing of data



INDEX MAP OF WESTERN MASSACHUSETTS SHOWING
AEROMAGNETIC MAPS PUBLISHED BY THE U.S.
GEOLOGICAL SURVEY AREA OF GP-618 SHADED



INDEX MAP OF MASSACHUSETTS SHOWING
AREA OF AEROMAGNETIC SURVEYS



AEROMAGNETIC MAP OF THE SPRINGFIELD NORTH QUADRANGLE
HAMPDEN AND HAMPSHIRE COUNTIES, MASSACHUSETTS
1968

Aeromagnetic survey flown 500 feet above
ground, 1959 by Peter Popenoe, and 1965
by P. W. Philbin. Compilation supervised
by F. P. Gilbert

For sale by U.S. Geological Survey, price 50 cents