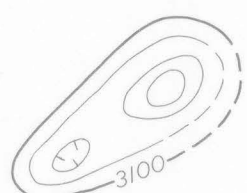


EXPLANATION



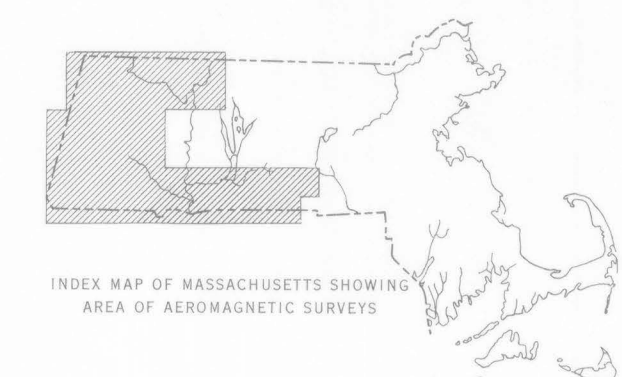
Magnetic contours
Showing total intensity magnetic field of the earth
in gammas relative to arbitrary datum. Hachured
to indicate closed areas of lower magnetic intensity,
dashed where data are incomplete. Contour
interval 20 gammas

Location of measured maximum or minimum
intensity within closed high or closed low

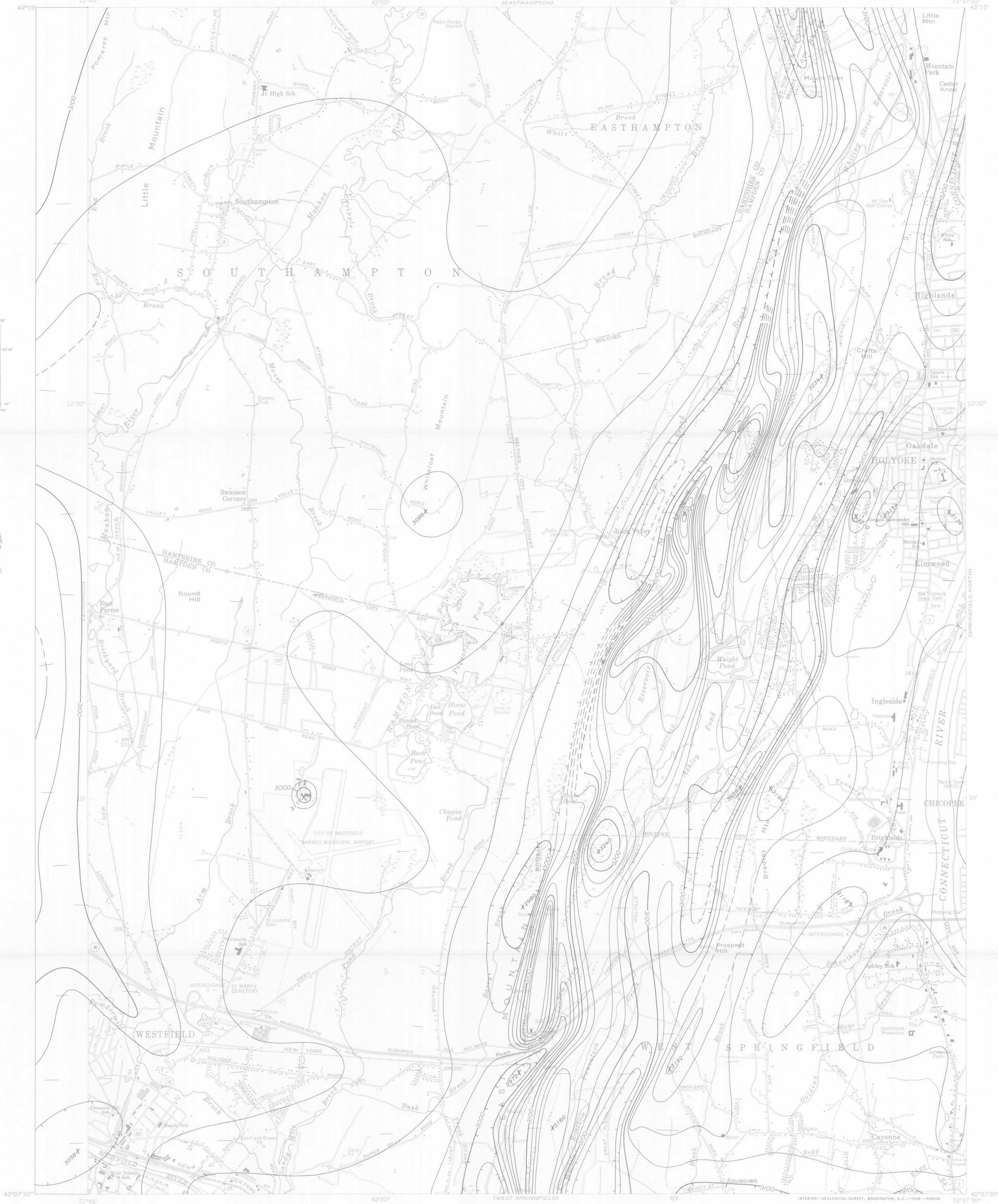
Flight path
Showing location and spacing of data



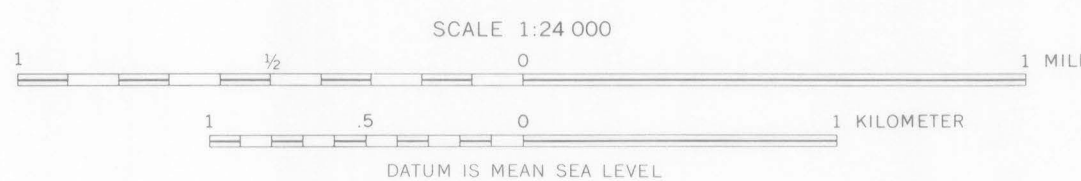
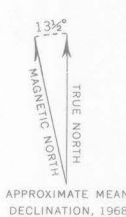
INDEX MAP OF WESTERN MASSACHUSETTS SHOWING
AEROMAGNETIC SURVEY AREAS PUBLISHED BY THE U.S.
GEOLOGICAL SURVEY AREA OF GP-622 SHADED



INDEX MAP OF MASSACHUSETTS SHOWING
AREA OF AEROMAGNETIC SURVEYS



Base from U.S. Geological Survey, 1958



AEROMAGNETIC MAP OF THE MOUNT TOM QUADRANGLE AND PART OF THE
WORONOCO QUADRANGLE, HAMPDEN AND HAMPSHIRE COUNTIES
MASSACHUSETTS
1968

Aeromagnetic survey flown 500 feet above
ground, 1959 by Peter Ropenne, and 1965
by P. W. Philbin. Compilation supervised
by F. P. Gilbert