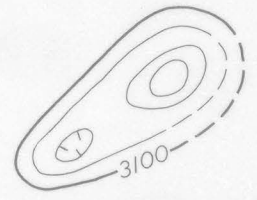
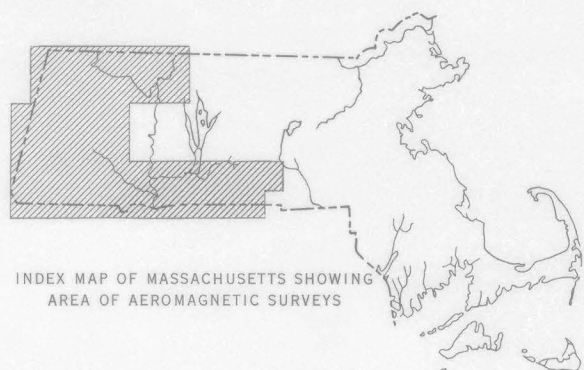
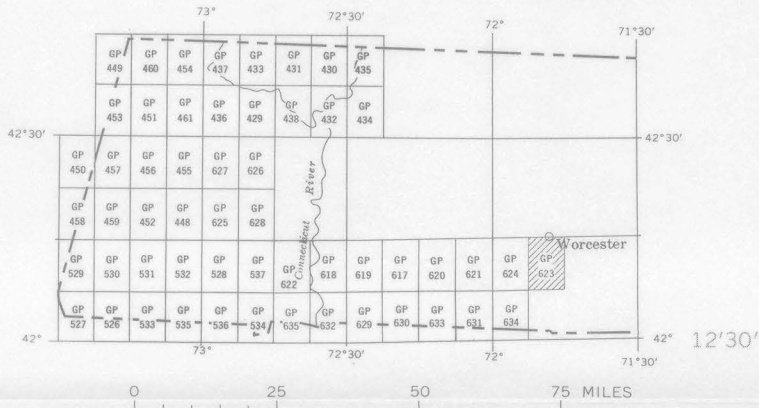


EXPLANATION



Location of measured maximum or minimum
intensity within closed high or closed low

Flight path
Showing location and spacing of data



AEROMAGNETIC MAP OF THE WORCESTER SOUTH QUADRANGLE
WORCESTER COUNTY, MASSACHUSETTS
1963

Aeromagnetic survey flown 500 feet above
ground, 1959 by Peter Popenoe, and 1965
by P. W. Philbin. Compilation supervised
by F. P. Gilbert

For sale by U.S. Geological Survey, price 50 cents