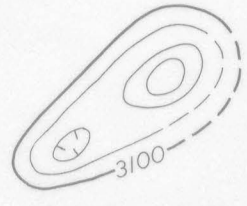


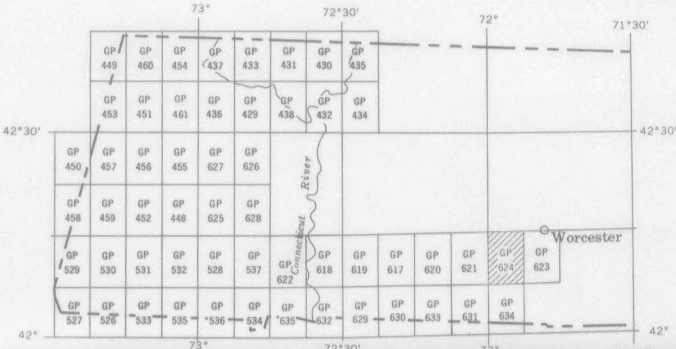
EXPLANATION



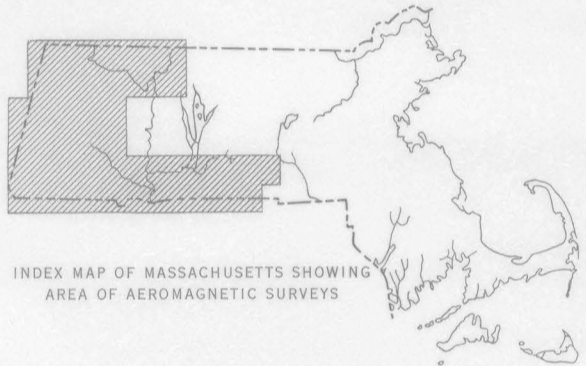
Magnetic contours  
Showing total intensity magnetic field of the earth  
in gammas relative to arbitrary datum. Hachured  
to indicate closed areas of lower magnetic intensity,  
dashed where data are incomplete. Contour  
interval 20 gammas

Location of measured maximum or minimum  
intensity within closed high or closed low

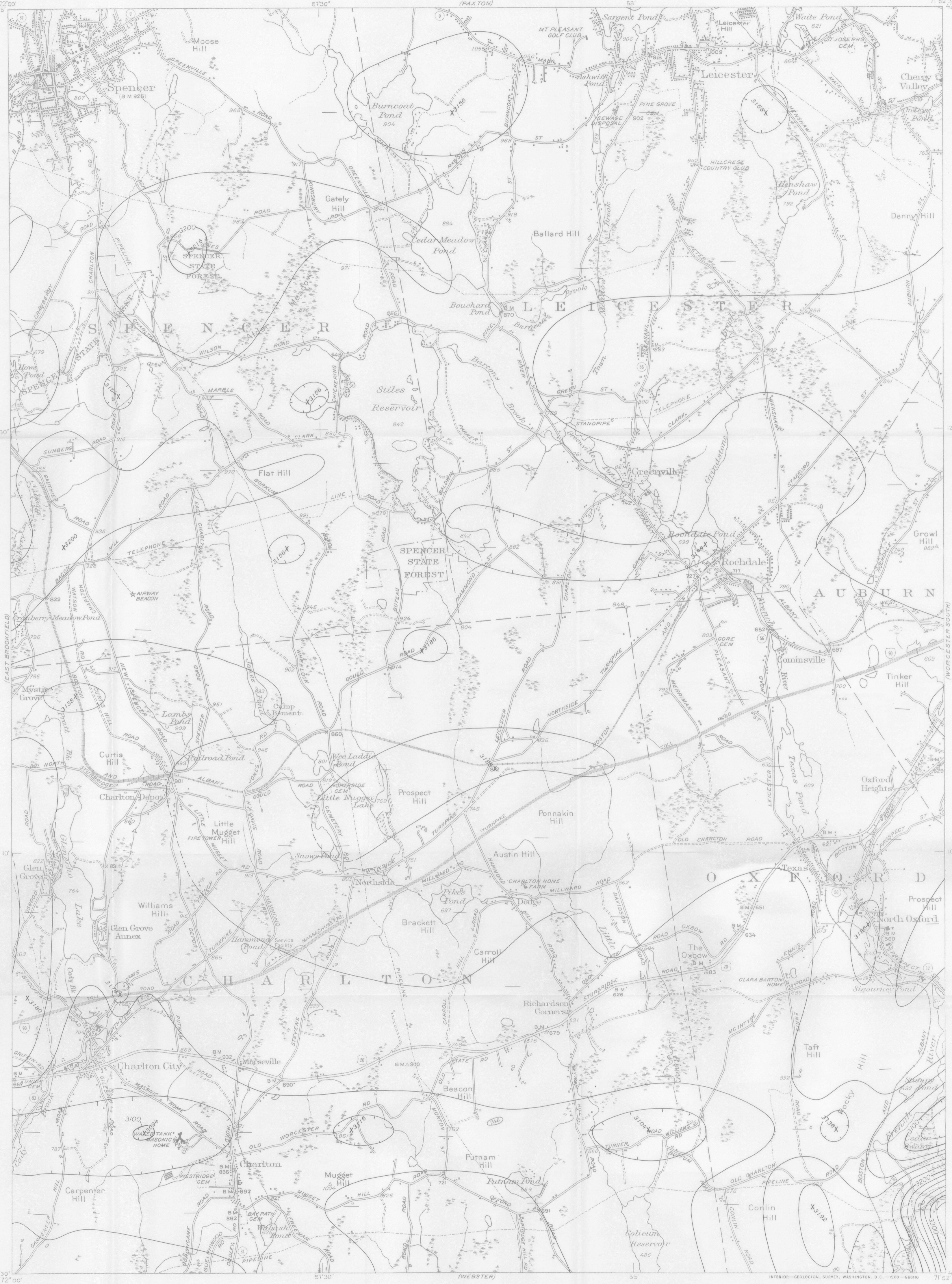
Flight path  
Showing location and spacing of data



INDEX MAP OF WESTERN MASSACHUSETTS SHOWING  
AEROMAGNETIC SURVEY AREAS PUBLISHED BY THE U.S.  
GEOLOGICAL SURVEY. AREA OF GP-624 SHADED

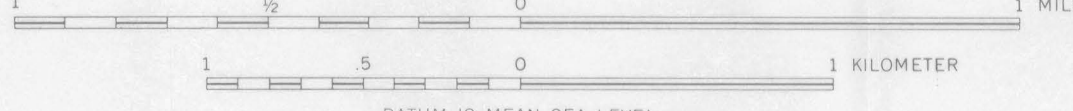


INDEX MAP OF MASSACHUSETTS SHOWING  
AREA OF AEROMAGNETIC SURVEYS



Base from U.S. Geological Survey, 1953

SCALE 1:24 000



DATUM IS MEAN SEA LEVEL

AEROMAGNETIC MAP OF THE LEICESTER QUADRANGLE  
WORCESTER COUNTY, MASSACHUSETTS  
1968

Aeromagnetic survey flown 500 feet above  
ground, 1953 by Peter Popowic, and 1965  
by P. W. Philbin. Compilation supervised  
by F. P. Gilbert

For sale by U.S. Geological Survey, price 50 cents