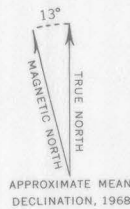
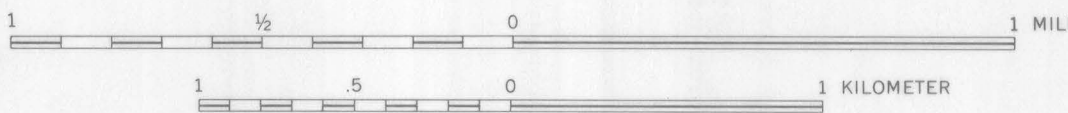


Base by U.S. Geological Survey, 1955



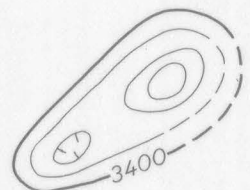
SCALE 1:24 000



INTERIOR—GEOLOGICAL SURVEY, WASHINGTON, D.C.—1968—G6820

Aeromagnetic survey flown at 500 feet above ground, 1965, by E. P. Smith. Compilation supervised by F. P. Gilbert

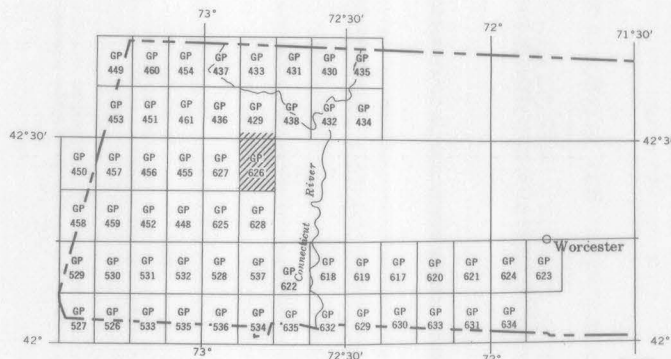
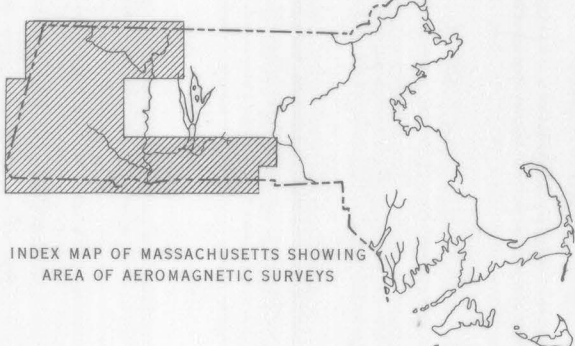
EXPLANATION



Magnetic contours
Showing total intensity magnetic field of the earth in gammas relative to arbitrary datum. Hachured to indicate closed areas of lower magnetic intensity, dashed where data are incomplete. Contour interval 20 gammas

Location of measured maximum or minimum intensity within closed high or closed low

Flight path
Showing location and spacing of data



INDEX MAP OF WESTERN MASSACHUSETTS SHOWING AEROMAGNETIC MAPS PUBLISHED BY THE U.S. GEOLOGICAL SURVEY. AREA OF GP-626 SHADED
NOTE: GP-626 IS RETIRED TO GP-429 ALONG COMMON BOUNDARY

AEROMAGNETIC MAP OF THE GOSHEN QUADRANGLE AND PART OF THE ASHFIELD QUADRANGLE
FRANKLIN AND HAMPSHIRE COUNTIES, MASSACHUSETTS

1968

For sale by U.S. Geological Survey, price 50 cents