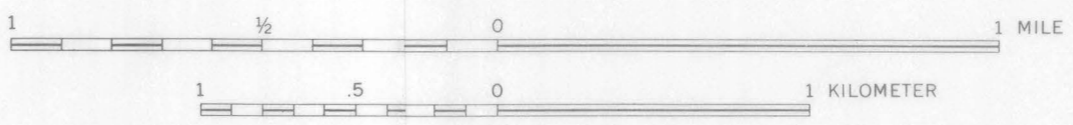


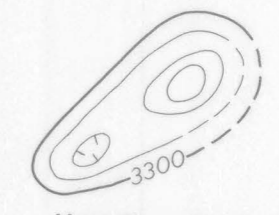
Base by U.S. Geological Survey, 1956

SCALE 1:24 000

Aeromagnetic survey flown at 500 feet above ground, 1965, by E. P. Smith. Compilation supervised by F. P. Gilbert



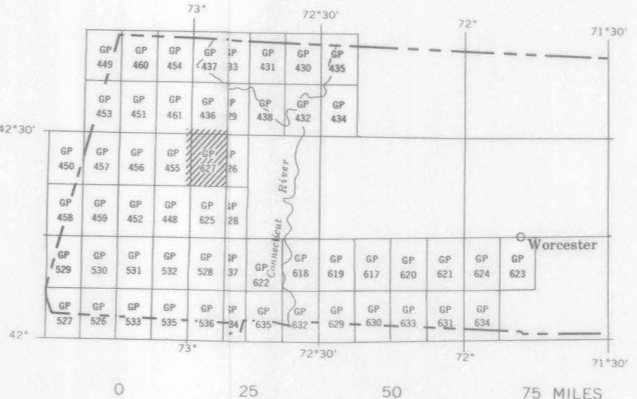
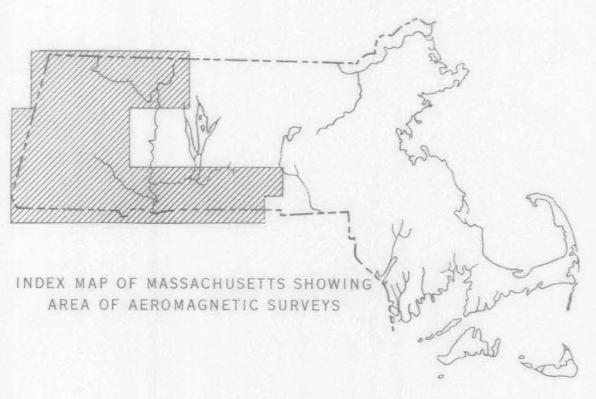
EXPLANATION



Magnetic contours  
Showing total intensity magnetic field of the earth in gammas relative to arbitrary datum. Hachured to indicate closed areas of lower magnetic intensity, dashed where data are incomplete. Contour interval 20 gammas

Location of measured maximum or minimum intensity within closed high or closed low

Flight path  
Showing location and spacing of data



INDEX MAP OF WESTERN MASSACHUSETTS SHOWING AEROMAGNETIC MAPS PUBLISHED BY THE U.S. GEOLOGICAL SURVEY AREA OF GP-627 SHADED  
NOTE: GP-627 IS RETIRED TO GP-436 AND GP-455 ALSO COMMON BOUNDARIES

AEROMAGNETIC MAP OF THE WORTHINGTON QUADRANGLE AND PARTS OF THE PLAINFIELD AND PERU QUADRANGLES, BERKSHIRE AND HAMPSHIRE COUNTIES, MASSACHUSETTS