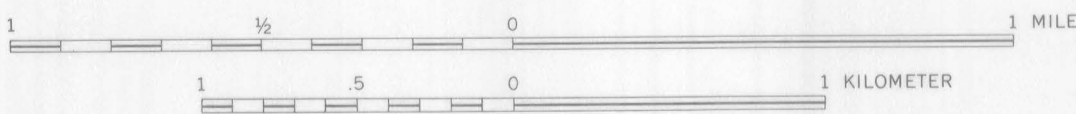


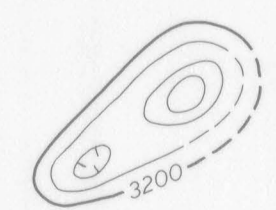
Base from U.S. Geological Survey, 1952

SCALE 1:24 000

Aeromagnetic survey flown at 500 feet above ground,
1955 by Peter Popens, and 1965 by P. W. Phibin.
Compilation supervised by F. P. Gilbert



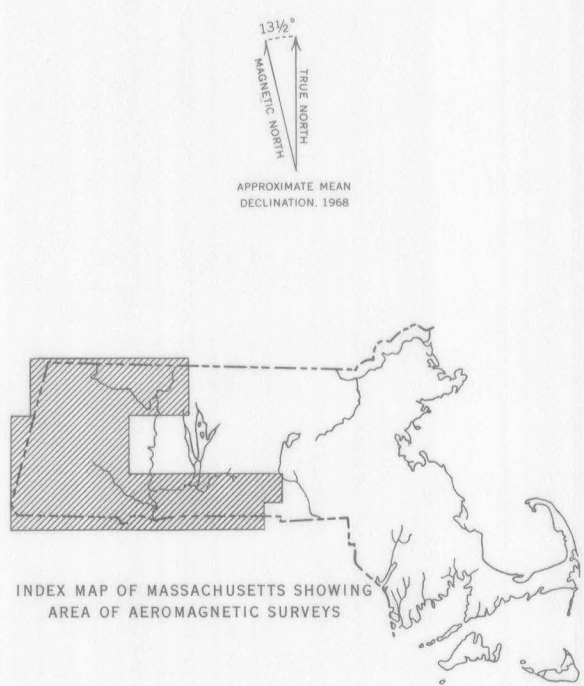
EXPLANATION



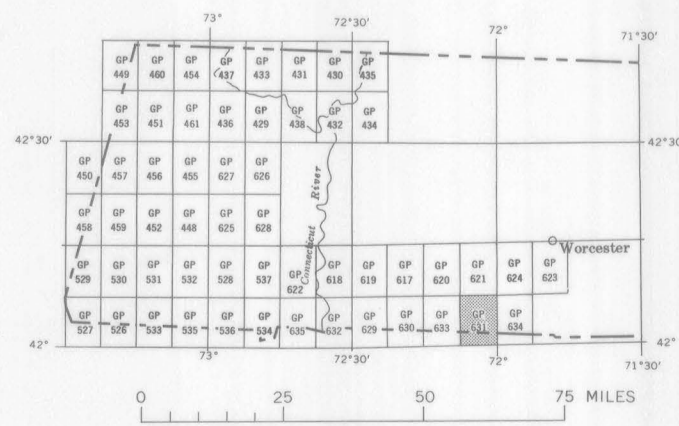
Magnetic contours
Showing total intensity magnetic field of the earth
in gammas relative to arbitrary datum. Hachured
to indicate closed areas of lower magnetic intensi-
ty, dashed where data are incomplete. Contour
interval 20 gammas

Location and amount of measured maximum
or minimum intensity within closed high
or closed low

Flight path
Showing location and spacing of data



INDEX MAP OF MASSACHUSETTS SHOWING
AREA OF AEROMAGNETIC SURVEYS



INDEX MAP OF WESTERN MASSACHUSETTS SHOWING
AEROMAGNETIC MAPS PUBLISHED BY THE U.S.
GEOLOGICAL SURVEY. AREA OF GP-631 SHADED

AEROMAGNETIC MAP OF THE SOUTHBRIDGE QUADRANGLE, WORCESTER COUNTY, MASSACHUSETTS
AND WINDHAM AND TOLLAND COUNTIES, CONNECTICUT