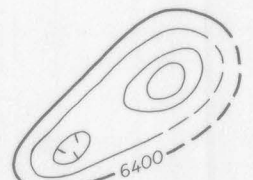


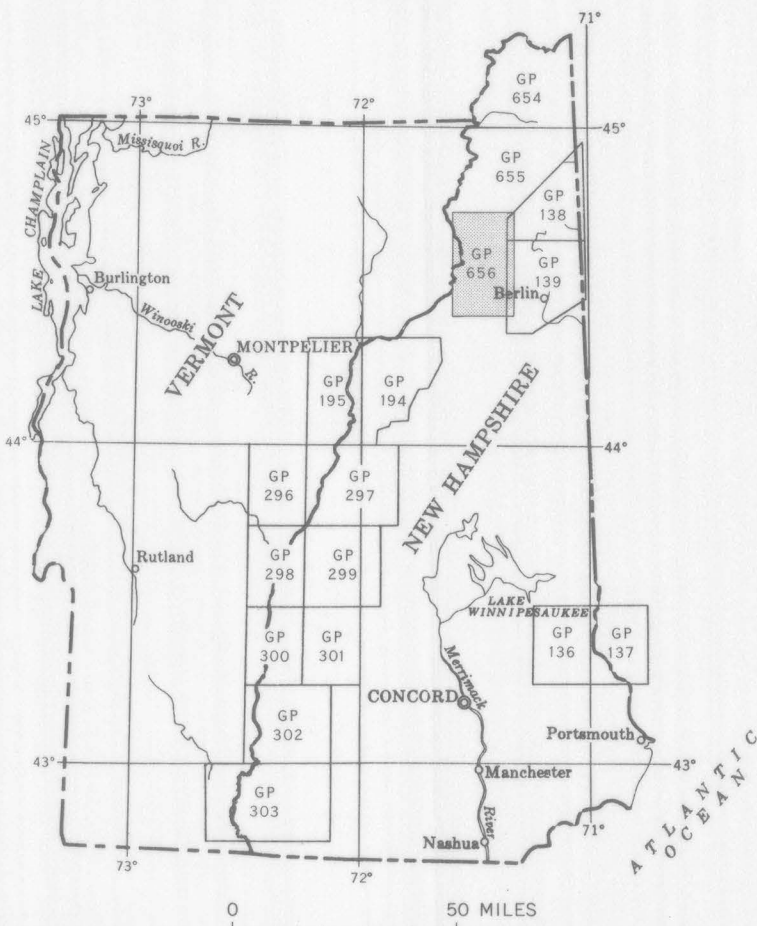
EXPLANATION



Magnetic contours
Showing total intensity magnetic field of the earth
in gammas relative to arbitrary datum. Hachured
to indicate closed areas of lower magnetic intensity.
Dashed where data are incomplete. Contour
intervals 20 and 100 gammas

Location of measured maximum or minimum
intensity within closed high or closed low

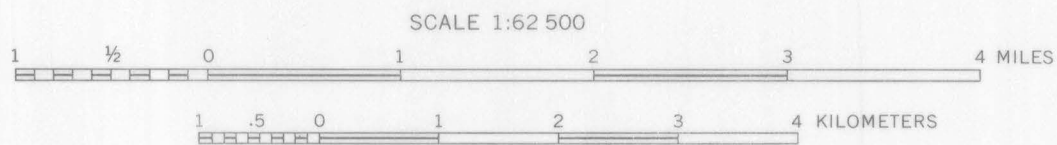
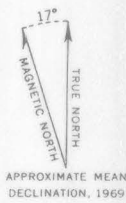
Flight path
Showing location and spacing of data



INDEX MAP OF NEW HAMPSHIRE SHOWING
AEROMAGNETIC MAPS PUBLISHED BY THE
U.S. GEOLOGICAL SURVEY. AREA OF
GP-656 SHADED



Base from U.S. Geological Survey
Guildhall, 1931-56; Percy, 1930; Whitefield
and Mt. Washington, 1935



Aeromagnetic survey flown at 3500 feet barometric
elevation, 1966, by E. P. Smith
Compilation supervised by C. L. Kruger

AEROMAGNETIC MAP OF BEACH HILL AND VICINITY
NEW HAMPSHIRE AND VERMONT

1969

For sale by U.S. Geological Survey, price 50 cents