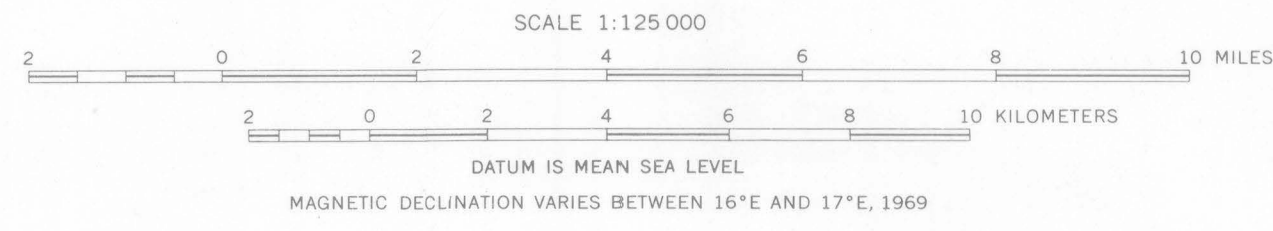
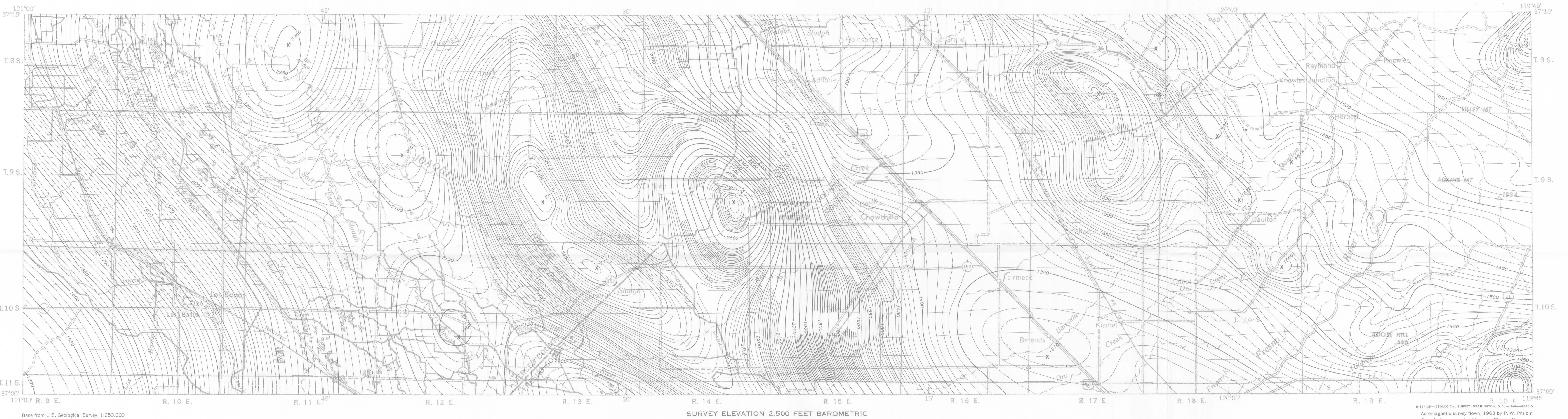
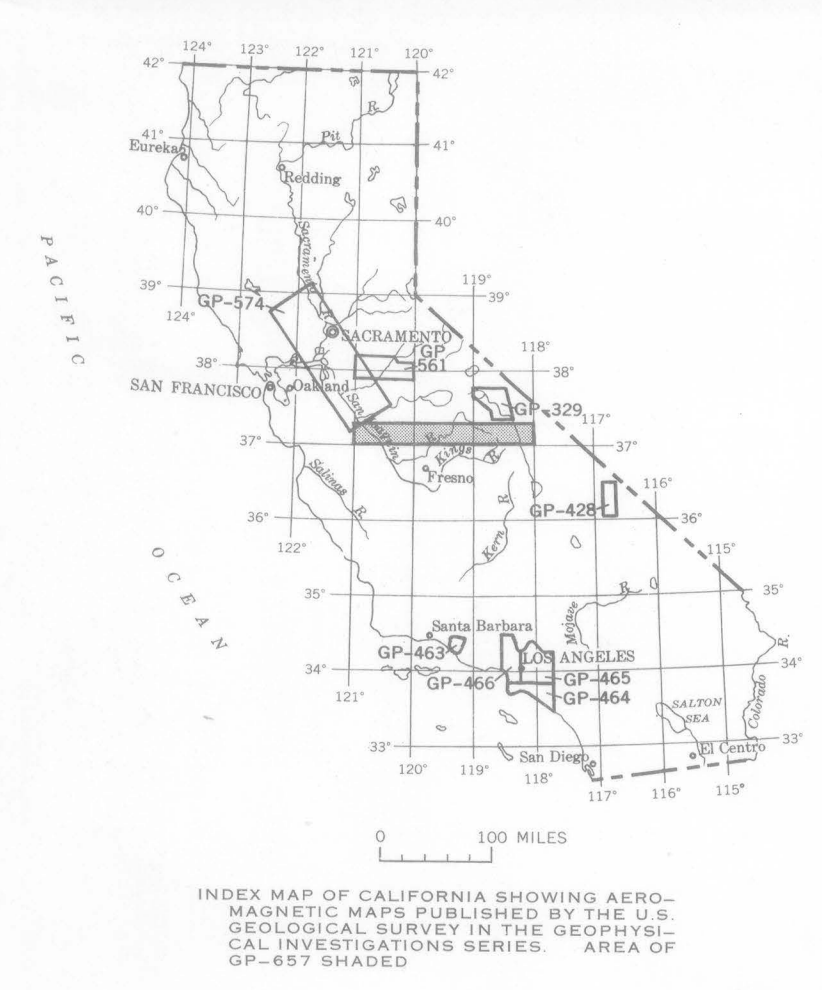


EXPLANATION

Magnetic contours
Showing total intensity magnetic field of the earth in gamma relative to arbitrary datum. Contoured to indicate closed areas of lower magnetic intensity. Dashed where data are incomplete. Contour intervals 10 and 50 gamma.

Location of measured maximum or minimum intensity within closed high or closed low

Flight path
Showing location and spacing of data



AEROMAGNETIC STRIP MAP ACROSS THE CENTRAL SIERRA NEVADA, CALIFORNIA