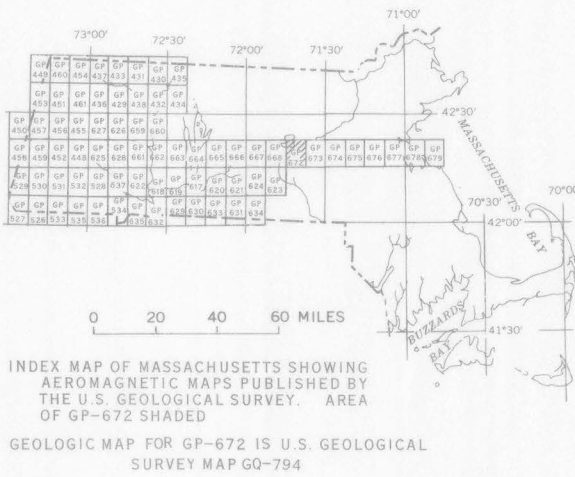




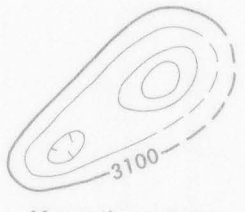
Base by U.S. Geological Survey, 1953

SCALE 1:24 000

Aeromagnetic survey flown and compiled by the
U.S. Geological Survey. Flown at 500 feet
above ground, 1966



EXPLANATION



Magnetic contours
Showing total intensity magnetic field of the earth
in gammas relative to arbitrary datum. Hachured
to indicate closed areas of lower magnetic
intensity, dashed where data are incomplete. Contour
intervals 20 and 100 gammas

Measured maximum or minimum intensity
within closed high or closed low

Flight path
Showing location and spacing of data

AEROMAGNETIC MAP OF THE SHREWSBURY QUADRANGLE, WORCESTER COUNTY, MASSACHUSETTS