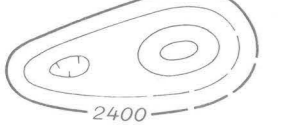


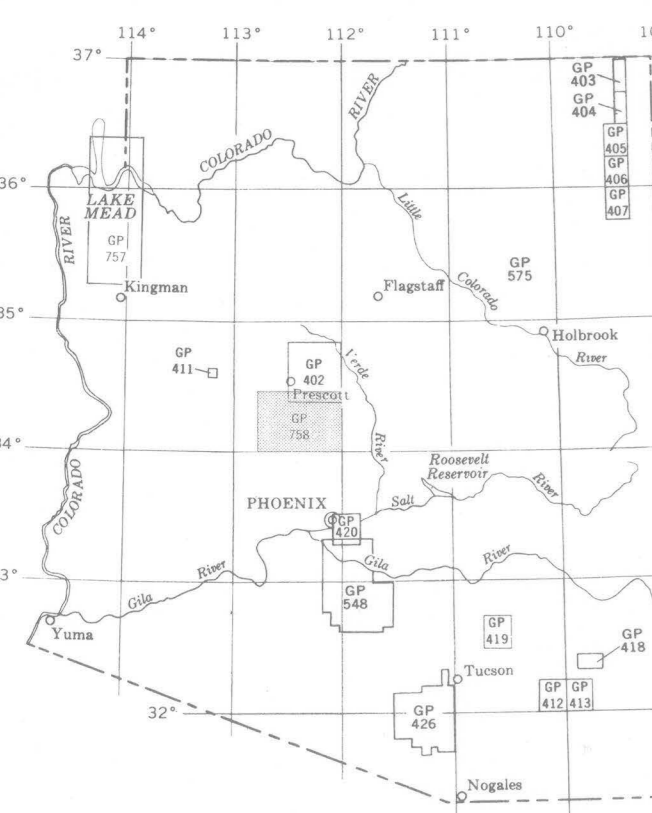
EXPLANATION



Magnetic contours
Showing total intensity magnetic field of the earth
in gamma units relative to arbitrary datum. Contours
to indicate closed areas of lower magnetic intensity.
Dashed where data are incomplete. Contour
interval 25 and 100 gamma.

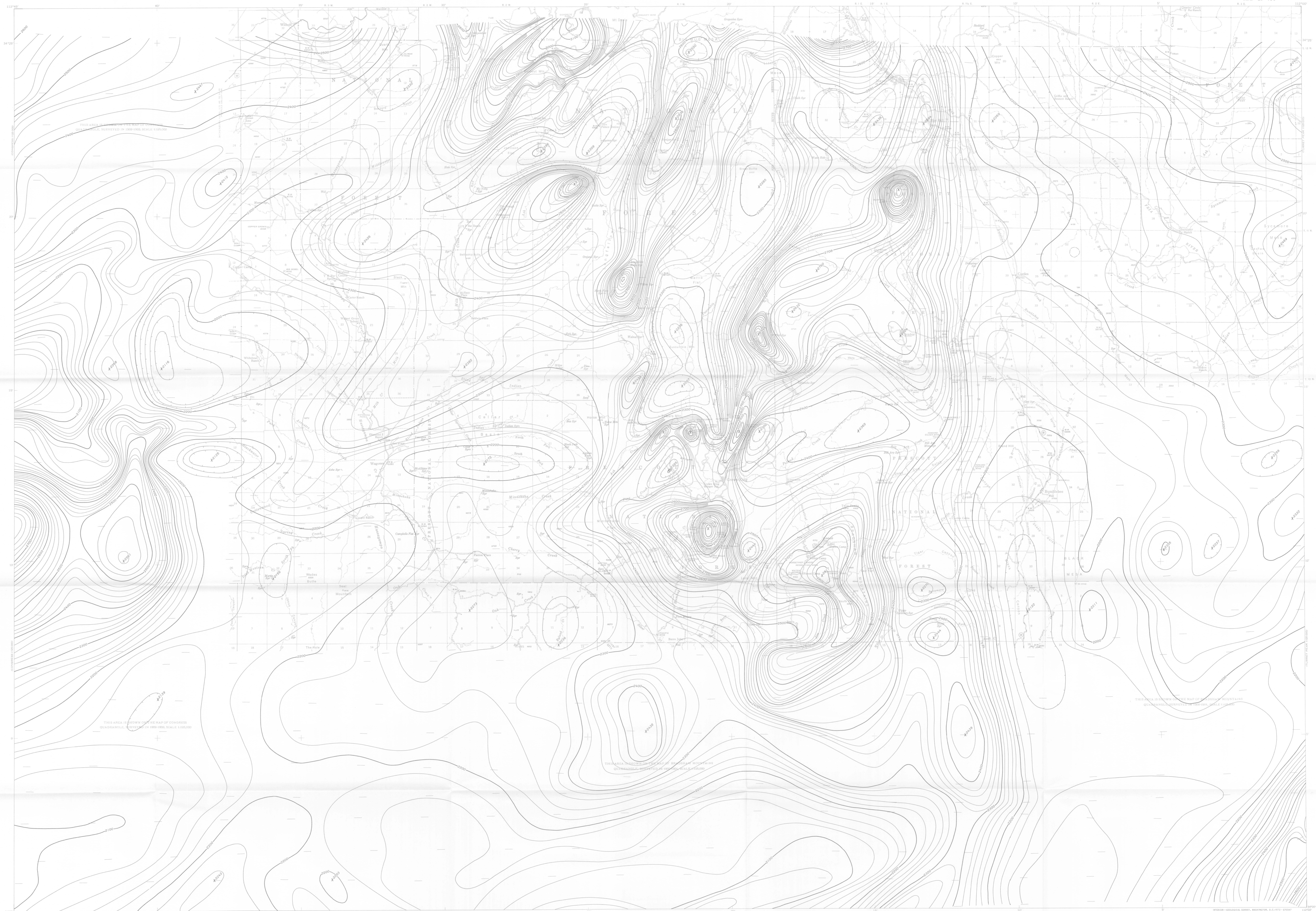
Location of measured maximum or minimum
intensity within closed high or closed low

Flight path
Showing location and spacing of data

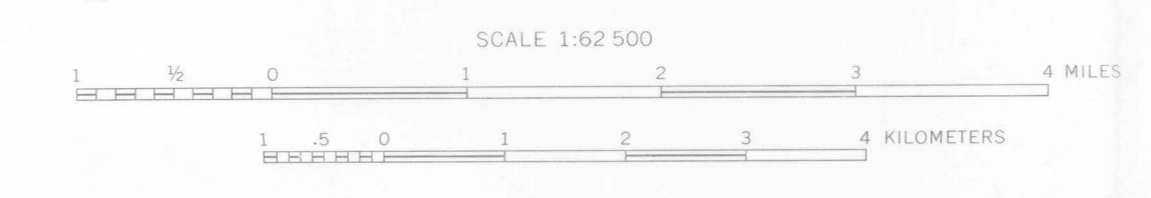
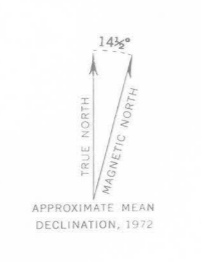


0 50 100 150 MILES

INSET MAP OF ARIZONA SHOWING AEROMAGNETIC MAPS
PUBLISHED BY THE U.S. GEOLOGICAL SURVEY IN THE
OP-RENEE AREA OF GP-758 SHAD



Base from U.S. Geological Survey
Bumshady, Owen King, Kirkland,
Meyer, McLean, and Wehner, 1947



AEROMAGNETIC MAP OF THE BRADSHAW MOUNTAINS AND VICINITY, YAVAPAI COUNTY, ARIZONA

1972

Aeromagnetic survey flown and compiled
by U.S. Geological Survey, 1968 at 8,000
feet barometric elevation, 1968

For sale by U.S. Geological Survey, price \$1.00