

Base by U.S. Geological Survey, 1957
10,000-foot grid based on Massachusetts
coordinate system, mainland zone

SCALE 1:24 000

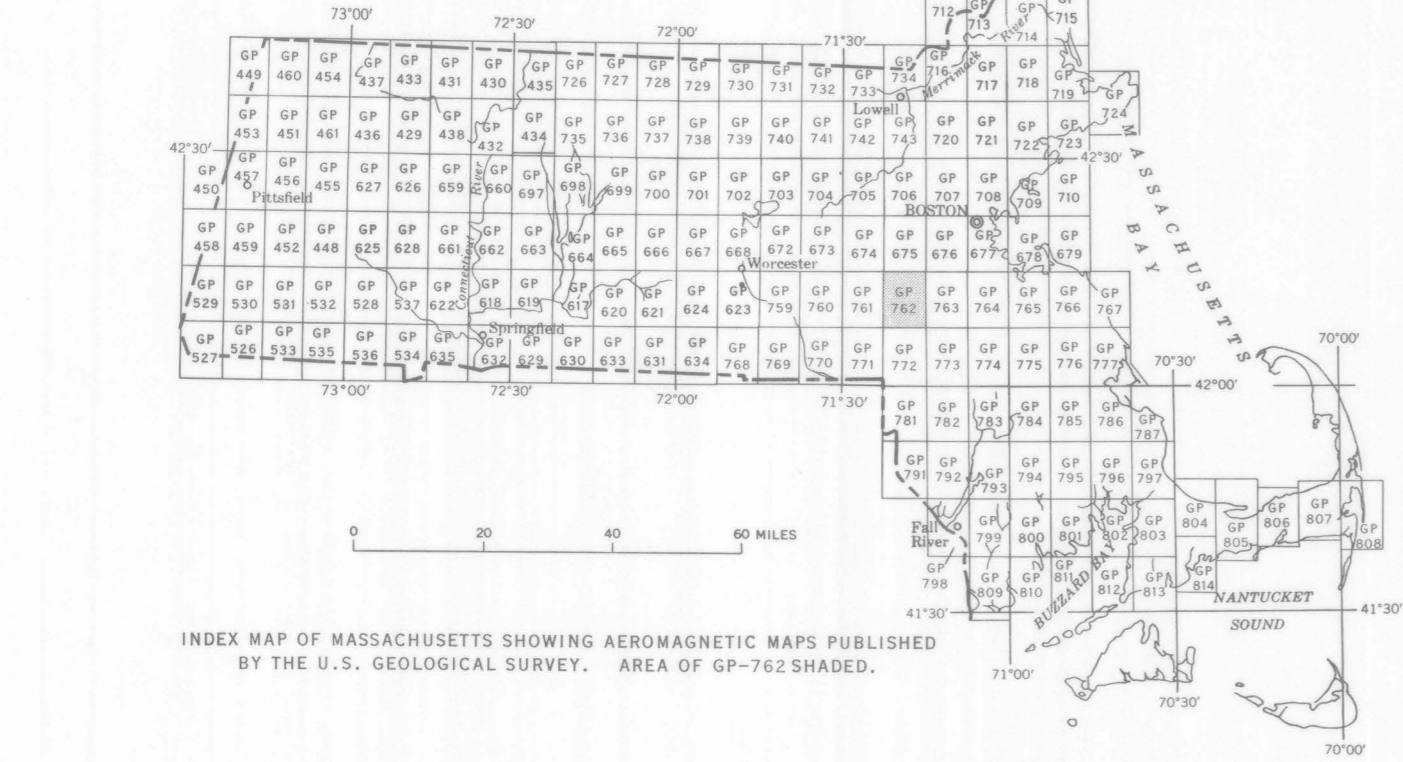
1 MILE

1 KILOMETER

APPROXIMATE MEAN
DECLINATION, 1951

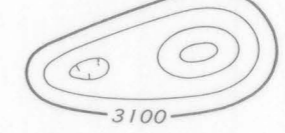
INTERIOR—GEOLOGICAL SURVEY, WASHINGTON, D.C. 20540

Aeromagnetic survey flown and compiled by the
U.S. Geological Survey. Flown at 500 feet
above ground, 1966



AEROMAGNETIC MAP OF THE MEDFIELD QUADRANGLE, NORFOLK AND MIDDLESEX COUNTIES, MASSACHUSETTS

EXPLANATION



Magnetic contours
Showing total intensity magnetic field of the earth
in gammas relative to arbitrary datum. Hatchured
to indicate closed areas of lower magnetic intensity.
Contour intervals 20 and 100 gammas

Location of measured maximum or minimum
intensity within closed high or closed low

Flight path
Showing location and spacing of data