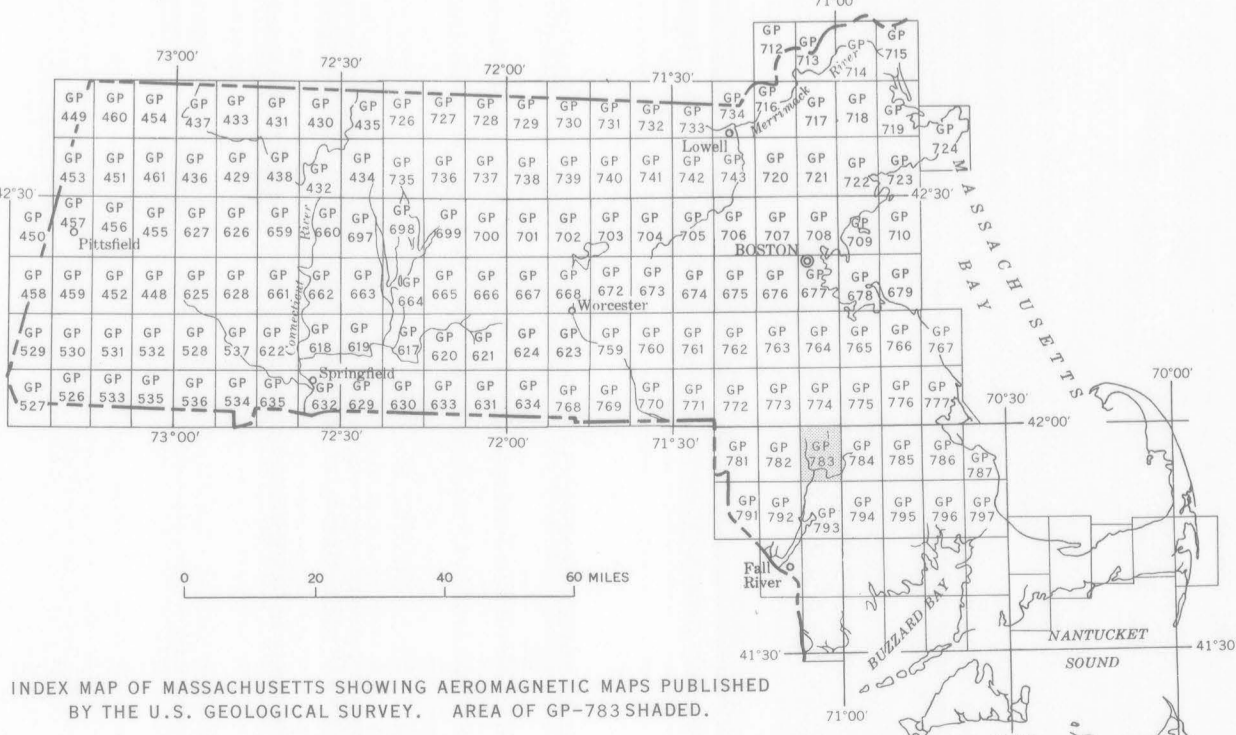
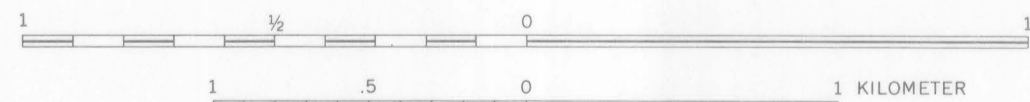


Base by U.S. Geological Survey, 1962

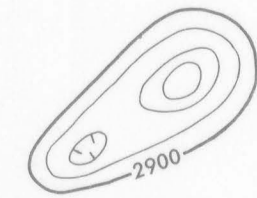
SCALE 1:24 000

Aeromagnetic survey flown and compiled by the
U.S. Geological Survey. Flown at 400 feet
above ground, 1968



INDEX MAP OF MASSACHUSETTS SHOWING AEROMAGNETIC MAPS PUBLISHED
BY THE U.S. GEOLOGICAL SURVEY. AREA OF GP-783 SHADED.

EXPLANATION



Magnetic contours
Showing total intensity magnetic field of the earth
in gammas relative to arbitrary datum. Hachured
to indicate closed areas of lower magnetic intensity.
Contour interval is 20 gammas

Measured maximum or minimum intensity
within closed high or closed low

Flight path
Showing location and spacing of data

AEROMAGNETIC MAP OF THE TAUNTON QUADRANGLE, BRISTOL AND PLYMOUTH COUNTIES, MASSACHUSETTS