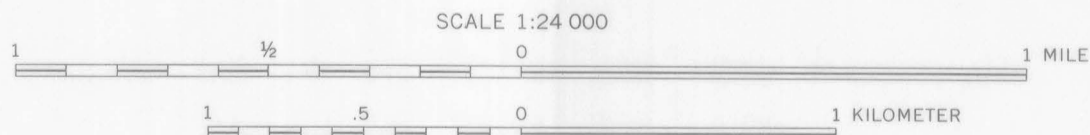
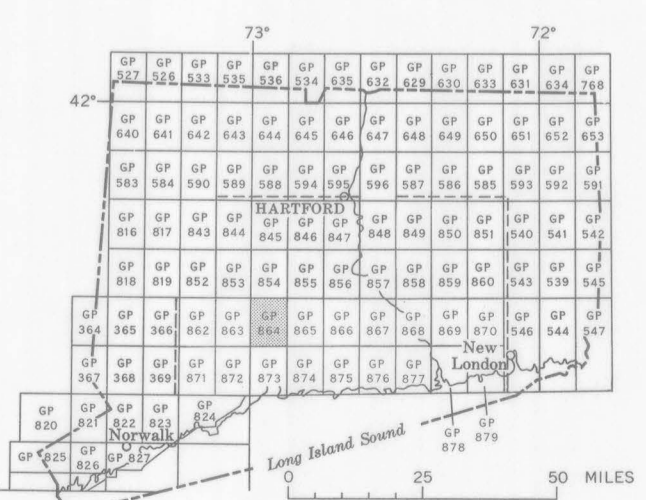


Base from U.S. Geological Survey, 1967
10,000-foot grid based on Connecticut coordinate system
1000-meter Universal Transverse Mercator grid, zone 18

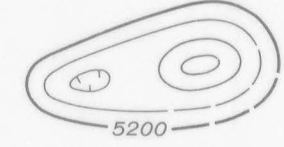


Aeromagnetic survey flown and compiled by the
U.S. Geological Survey. Flown at 500 feet
above ground, 1959 and 1965



INDEX MAP OF CONNECTICUT SHOWING AEROMAGNETIC MAPS PUBLISHED BY THE U.S. GEOLOGICAL SURVEY. AREA OF GP-864 IS SHADED.
GEOLOGIC MAP FOR GP-864 IS U.S. GEOLOGICAL SURVEY MAP GP-199

EXPLANATION



Magnetic contours
Showing total intensity magnetic field of the earth in gammas relative to arbitrary datum. Hatchured to indicate closed areas of lower magnetic intensity. Dashed where data are incomplete. Contour intervals 20 and 100 gammas

Location of measured maximum or minimum intensity within closed high or closed low

Flight path
Showing location and spacing of data

AEROMAGNETIC MAP OF THE MOUNT CARMELO QUADRANGLE, NEW HAVEN COUNTY, CONNECTICUT