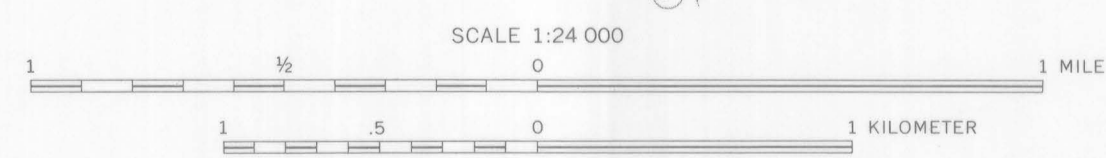
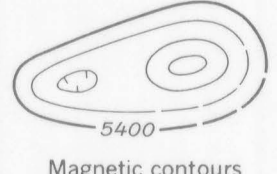


Base from U.S. Geological Survey, 1961
Photorevised in 1971
10,000-foot grid based on Connecticut coordinate system
1000-meter Universal Transverse Mercator grid, zone 18



Aeromagnetic survey flown and compiled by the
U.S. Geological Survey. Flown at 500 feet
above ground, 1959 and 1965

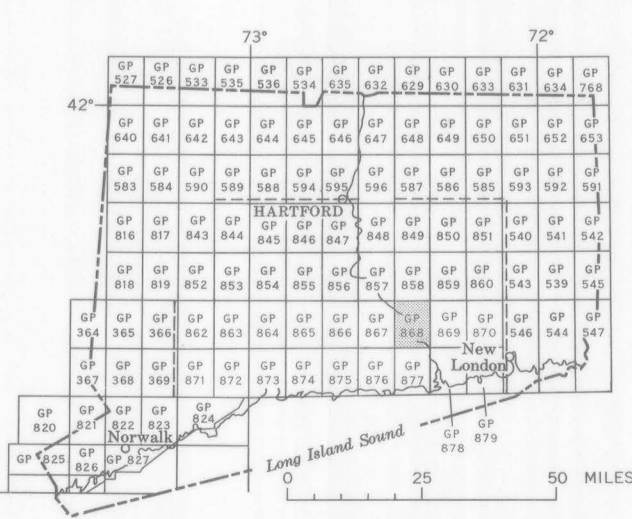
EXPLANATION



Magnetic contours
Showing total intensity magnetic field of the earth
in gammas relative to arbitrary datum. Hachured
to indicate closed areas of lower magnetic intensity.
Dashed where data are incomplete. Contour
intervals 20 and 100 gammas

Location of measured maximum or minimum
intensity within closed high or closed low

Flight path
Showing location and spacing of data



INDEX MAP OF CONNECTICUT SHOWING AEROMAGNETIC MAPS PUBLISHED BY THE U.S. GEOLOGICAL SURVEY. AREA OF GP-868 SHADED

AEROMAGNETIC MAP OF THE DEEP RIVER QUADRANGLE, MIDDLESEX AND NEW LONDON COUNTIES, CONNECTICUT
1973