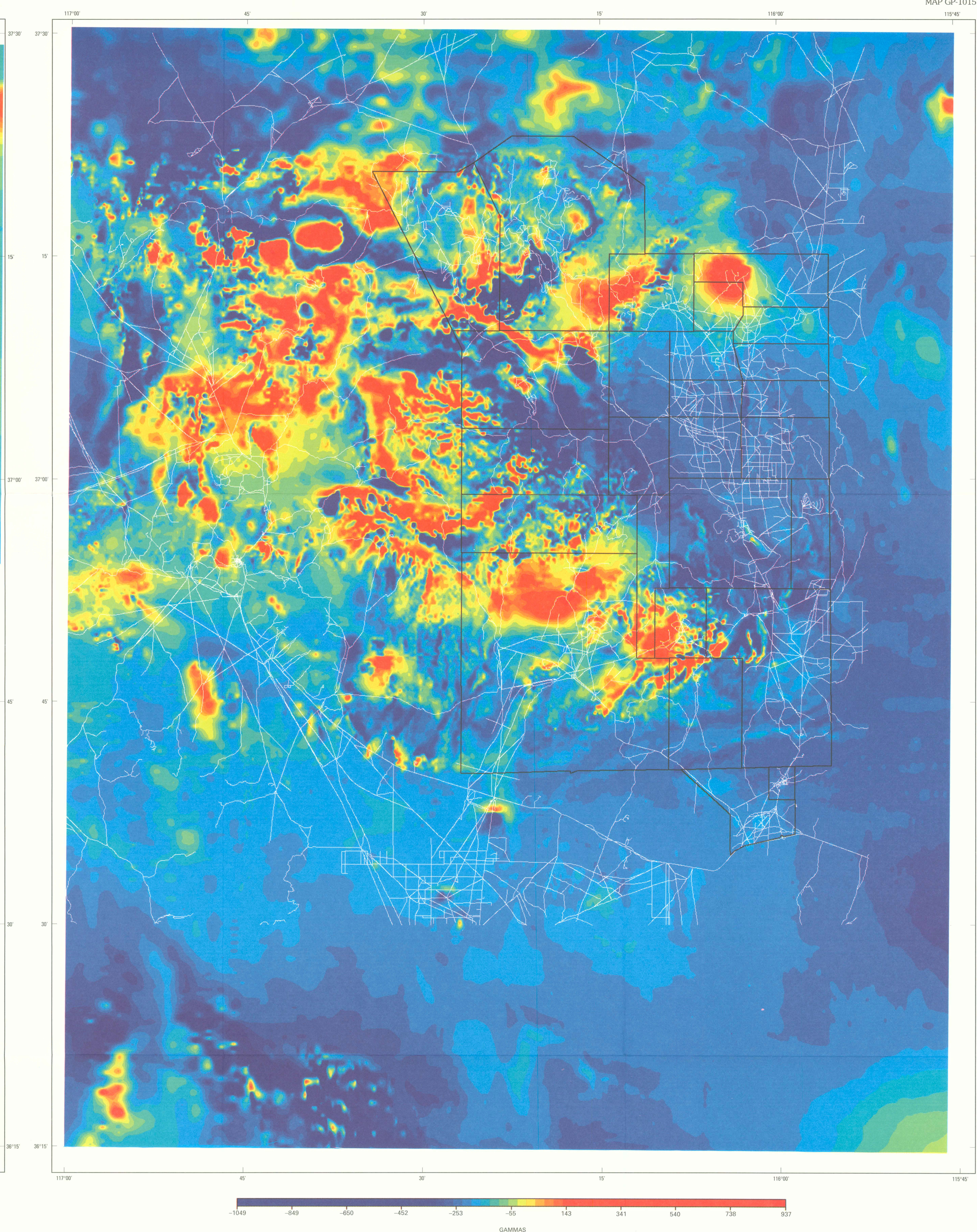
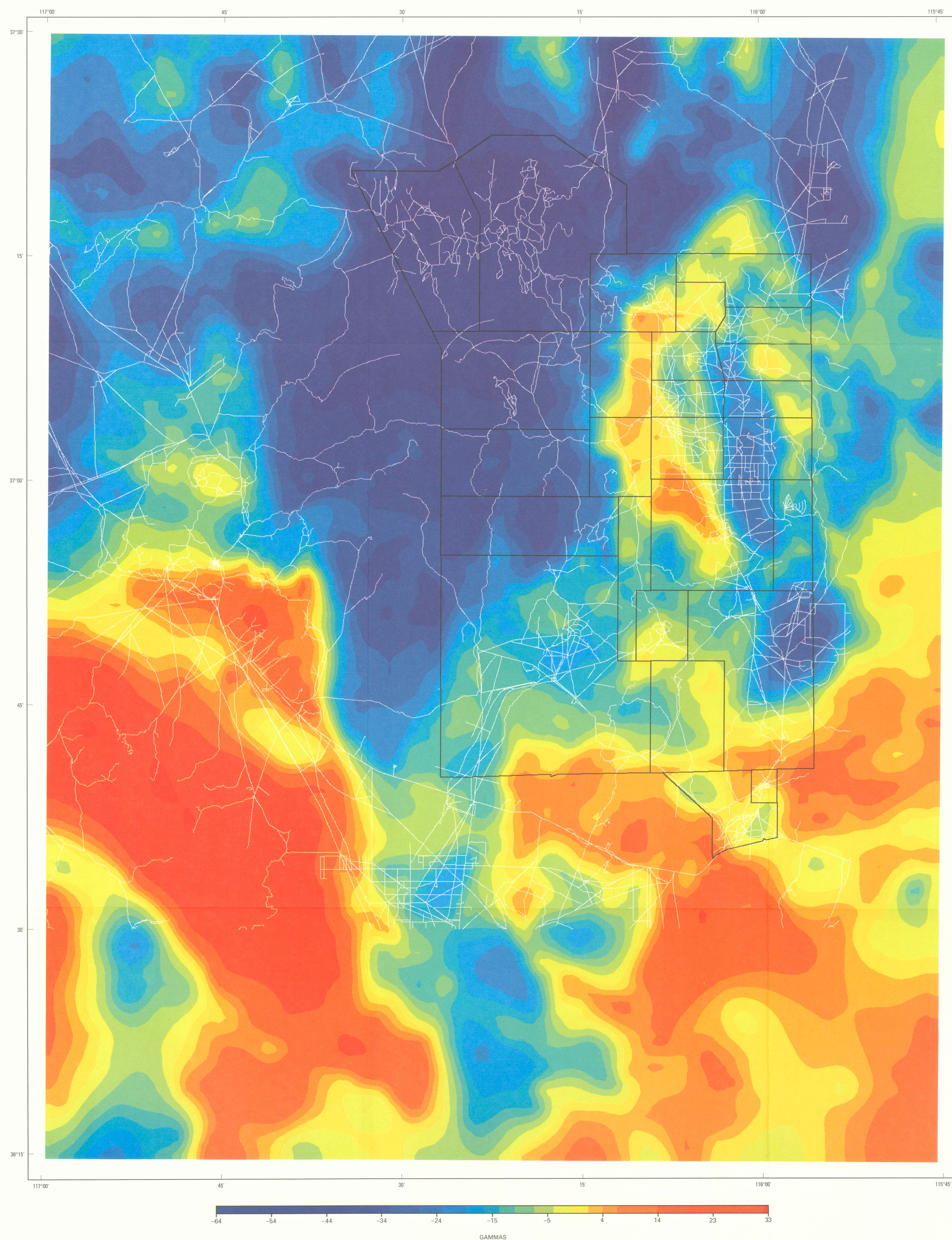


MAP A. COMPOSITE AEROMAGNETIC-ANOMALY MAP



MAP B. MERGED AEROMAGNETIC-ANOMALY MAP



MAP C. ISOSTATIC GRAVITY-ANOMALY MAP

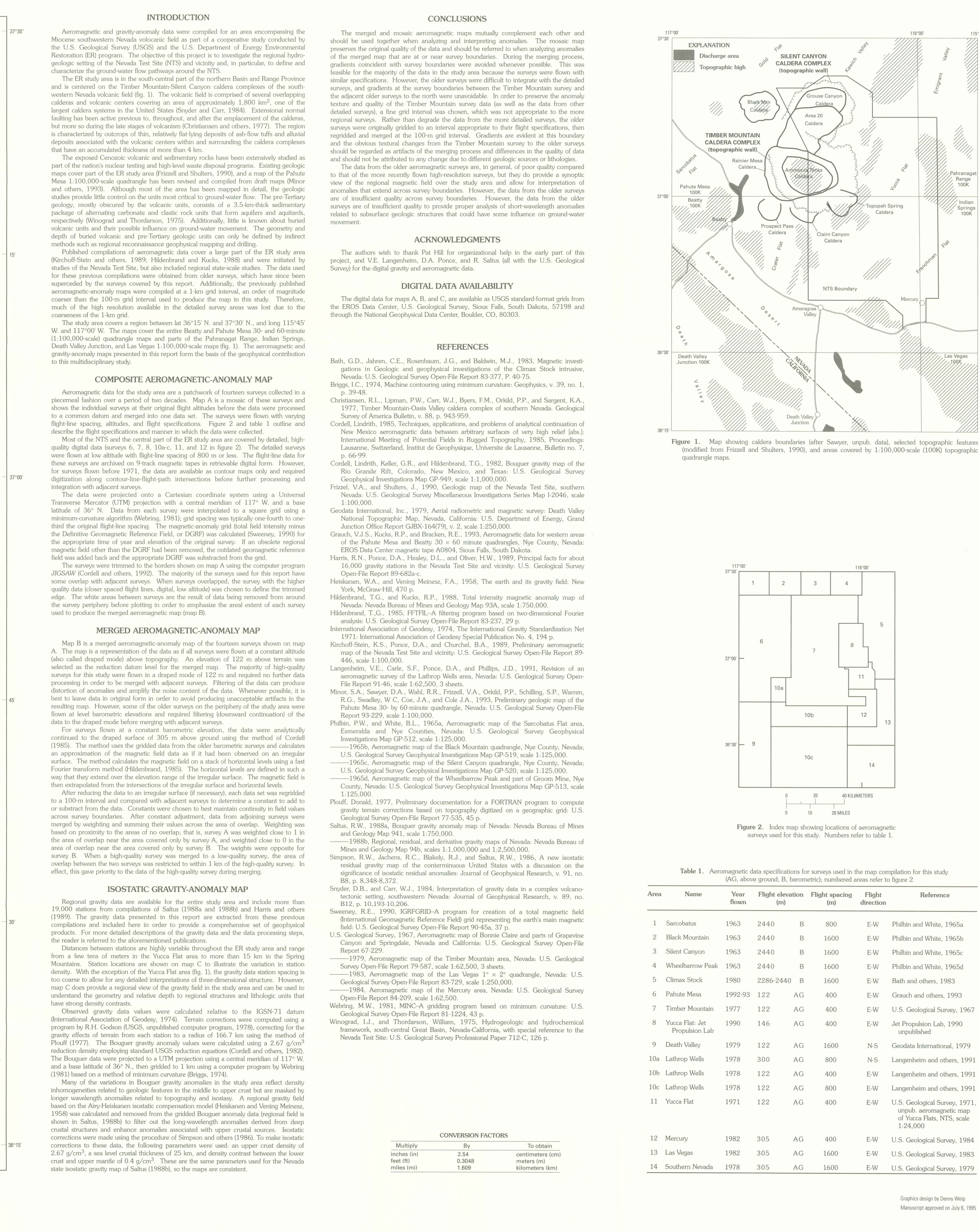


Figure 1. Map showing caldera boundaries (after Sawyer, unpub. data), selected topographic features

Figure 2. Index map showing locations of aeromagnetic surveys used for this study. Numbers refer to table 1.

Area	Table 1. Asynchronous data specifications for arrays used in the compilation for the reference					Reference	
	Name	Years	Flight duration (h)	Flight direction	Resolution		
1	Sarabhai	1963	2440	B	800	E/W	Phulins and White, 1965a
	Black Mountain	1963	2440	B	1600	E/W	Phulins and White, 1965b
3	Silent Canyon	1963	2440	B	1600	E/W	Phulins and White, 1965c
4	Whetstone Peak	1963	2440	B	1600	E/W	Phulins and White, 1965d
5	Climax Summit	1968	2236-2440	B	1600	E/W	Bash and others, 1983
6	Palula Mesa	1959-93	122	AG	400	E/W	Grauch and others, 1967
7	Timber Mountain	1957	122	AG	400	E/W	U.S. Geological Survey, 1953
8	Yucca Flat Air Propection Ltd.	1950	146	AG	400	E/W	Air Propection Ltd., 1950
9	Death Valley	1979	122	AG	1600	N	Geosols International, 1979
10a	Lathrop Wells	1978	300	AG	800	N	Langerharts and others, 1991
10b	Lathrop Wells	1978	122	AG	800	E/W	Langerharts and others, 1991
10c	Lathrop Wells	1978	122	AG	800	E/W	Langerharts and others, 1991
11	Yucca Flat	1971	122	AG	400	E/W	U.S. Geological Survey, 1971; unpubl. comparative use of Yucca Flat, NTS, scale 1:24,000
12	Mercury	1982	305	AG	1600	E/W	U.S. Geological Survey, 1984
13	Las Vegas	1982	305	AG	1600	E/W	U.S. Geological Survey, 1983
14	Seafloor Neutron	1978	305	AG	1600	E/W	U.S. Geological Survey, 1979

Graphics design by Denny Welp
Manuscript approved on July 6, 1995