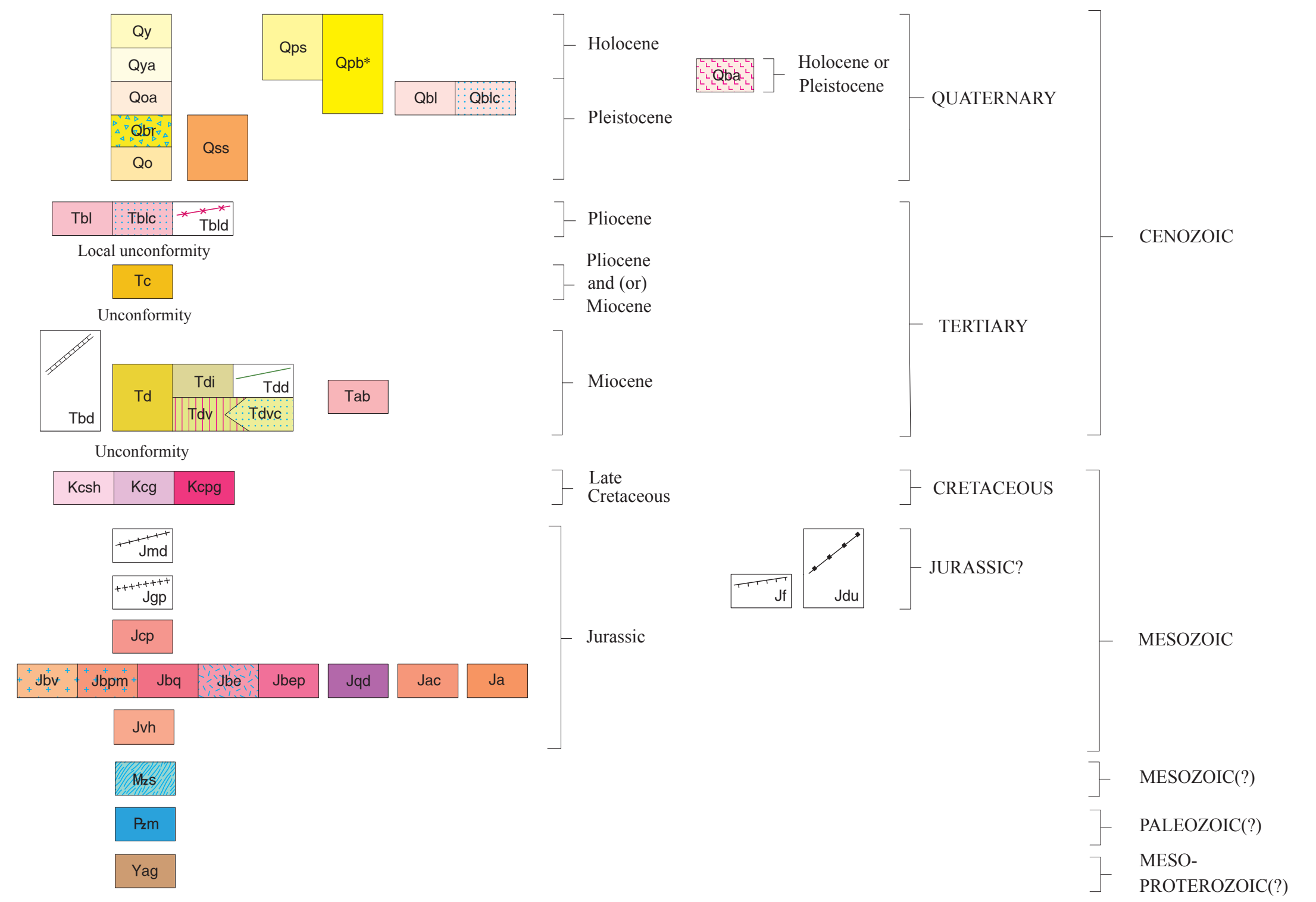
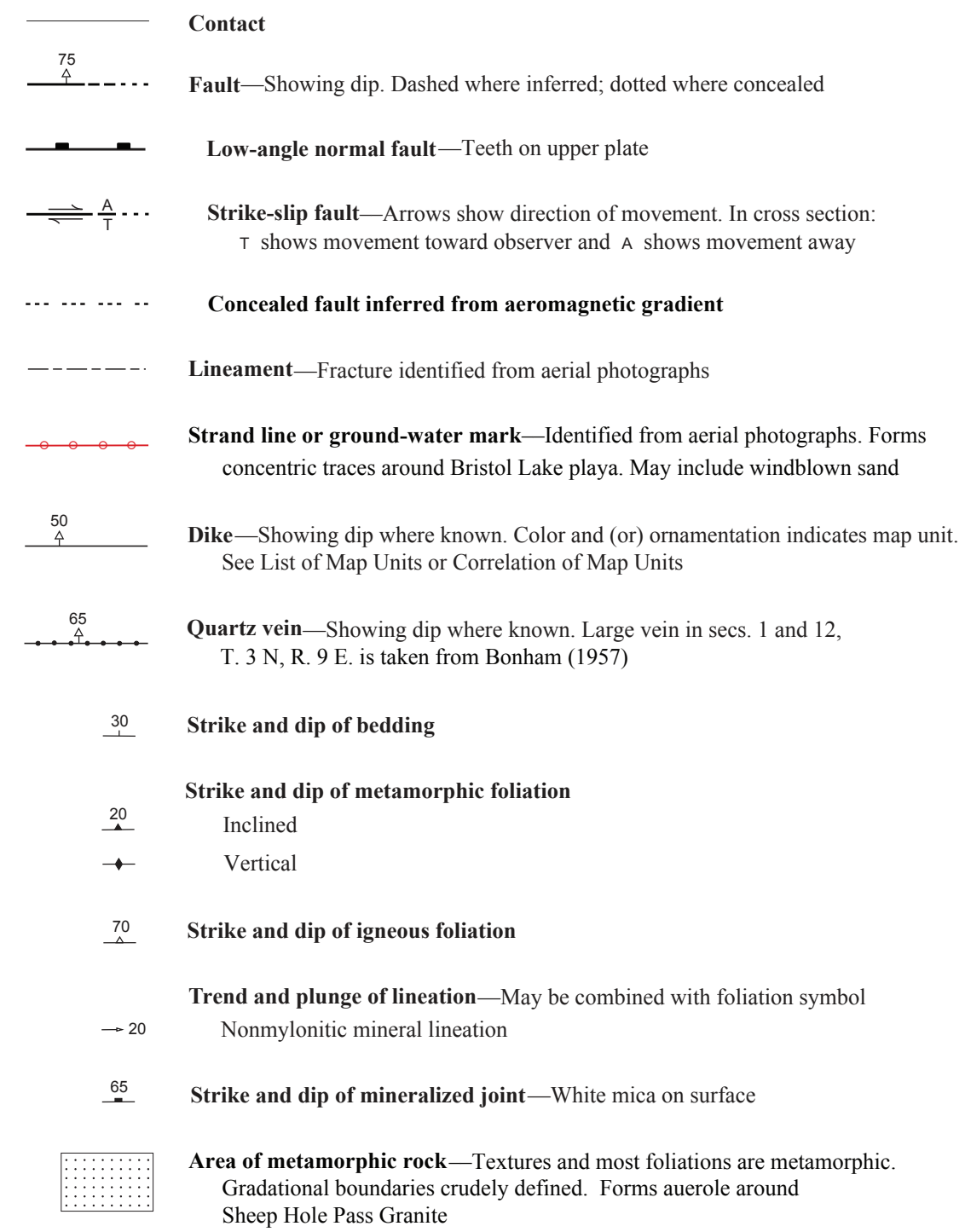


CORRELATION OF MAP UNITS

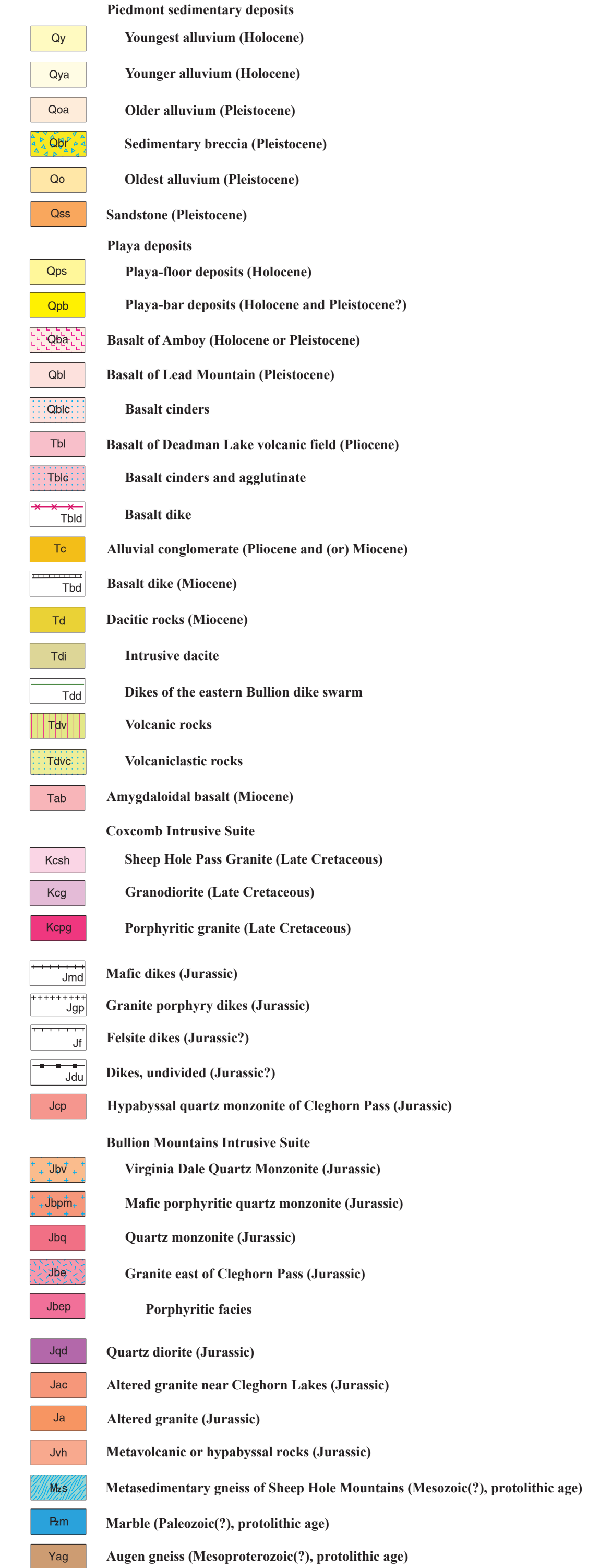
(\*See Description of Map Units for specific age assignments)



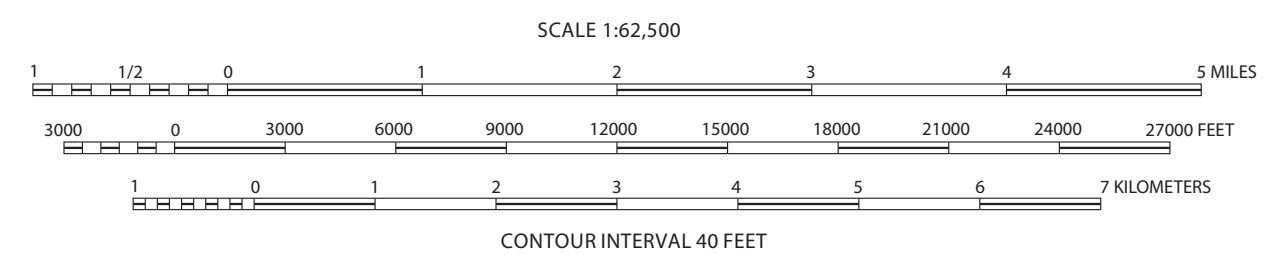
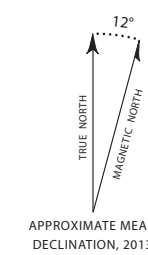
EXPLANATION OF SYMBOLS



LIST OF MAP UNITS



Base from U.S. Geological Survey, 1955  
Polyconic projection; 1927 North American Datum



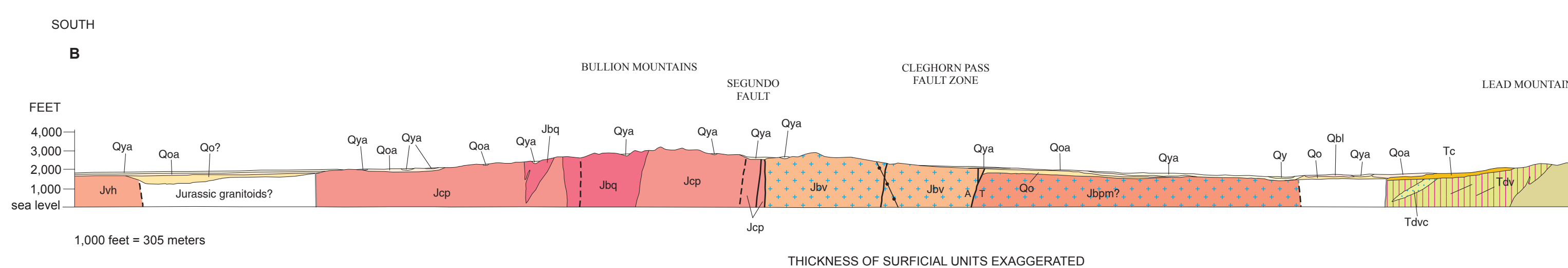
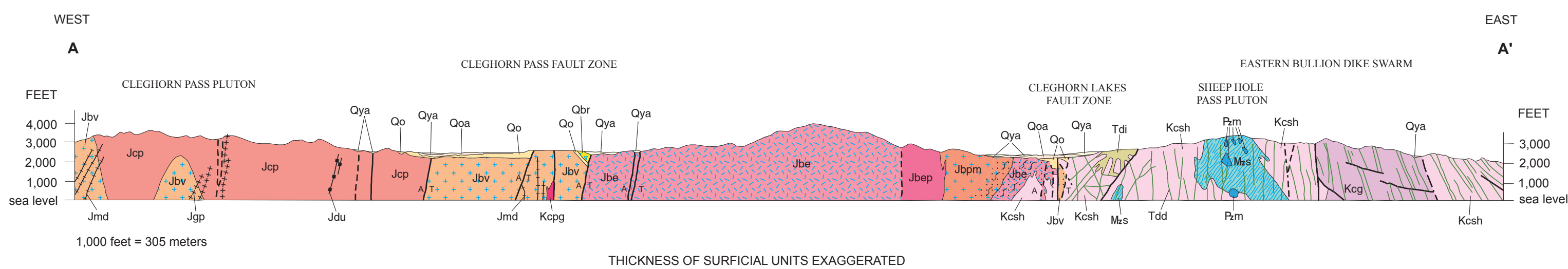
Geology mapped by K. Howard, 1980-81; 1984, 1991; B. John, 1980; Joseph R. Davis, 1980; T. Fitzgibbon, 1984; K. Jagiello (see Jagiello, 1991); and Geoffrey Phelps, 1991. In places modified from Bonham (1957) and Schaller and others (1959b).

Photogeology partly from Landsat Thematic Mapper images processed by R. Blom at the Jet Propulsion Laboratory and by K. Jagiello at the University of California, Los Angeles. Concealed faults interpreted partly from aeromagnetic map of the U.S. Geological Survey (1981).

Digital cartography by Geoffrey Phelps, Carrie Randolph, Pamela Cossette, and Douglas Hirschberg

Edited by Carol Ostegen

Manuscript approved for publication November 22, 1994; latest revision July 2013.



Geologic Map of the Lead Mountain 15' Quadrangle, San Bernardino County, California

By  
Keith A. Howard, Keith J. Jagiello, Todd T. Fitzgibbon, and Barbara E. John  
2013

Any use of trade, product, or firm names in this publication is for descriptive purposes only and does not imply endorsement by the U.S. Government.  
This map was printed on an electronic plotter directly from digital files. Dimensional calibration may vary between electronic plotters and between X and Y directions on the same plotter, and paper may change size due to atmospheric conditions; therefore, scale and proportions may not be true on plots of this map.  
For sale by U.S. Geological Survey, Information Services, Box 25286, Federal Center, Denver, CO 80225, 1-888-ASK-USGS.  
Digital files available at <http://pubs.usgs.gov/gq/1766/>  
Suggested Citation: Howard, K.A., Jagiello, K.J., Fitzgibbon, T.T., and John, B.E., 2013, Geologic map of the Lead Mountain 15' quadrangle, San Bernardino County, California: U.S. Geological Survey Geologic Quadrangle Map GQ-1766, scale 1:62,500, <http://pubs.usgs.gov/gq/1766/>.