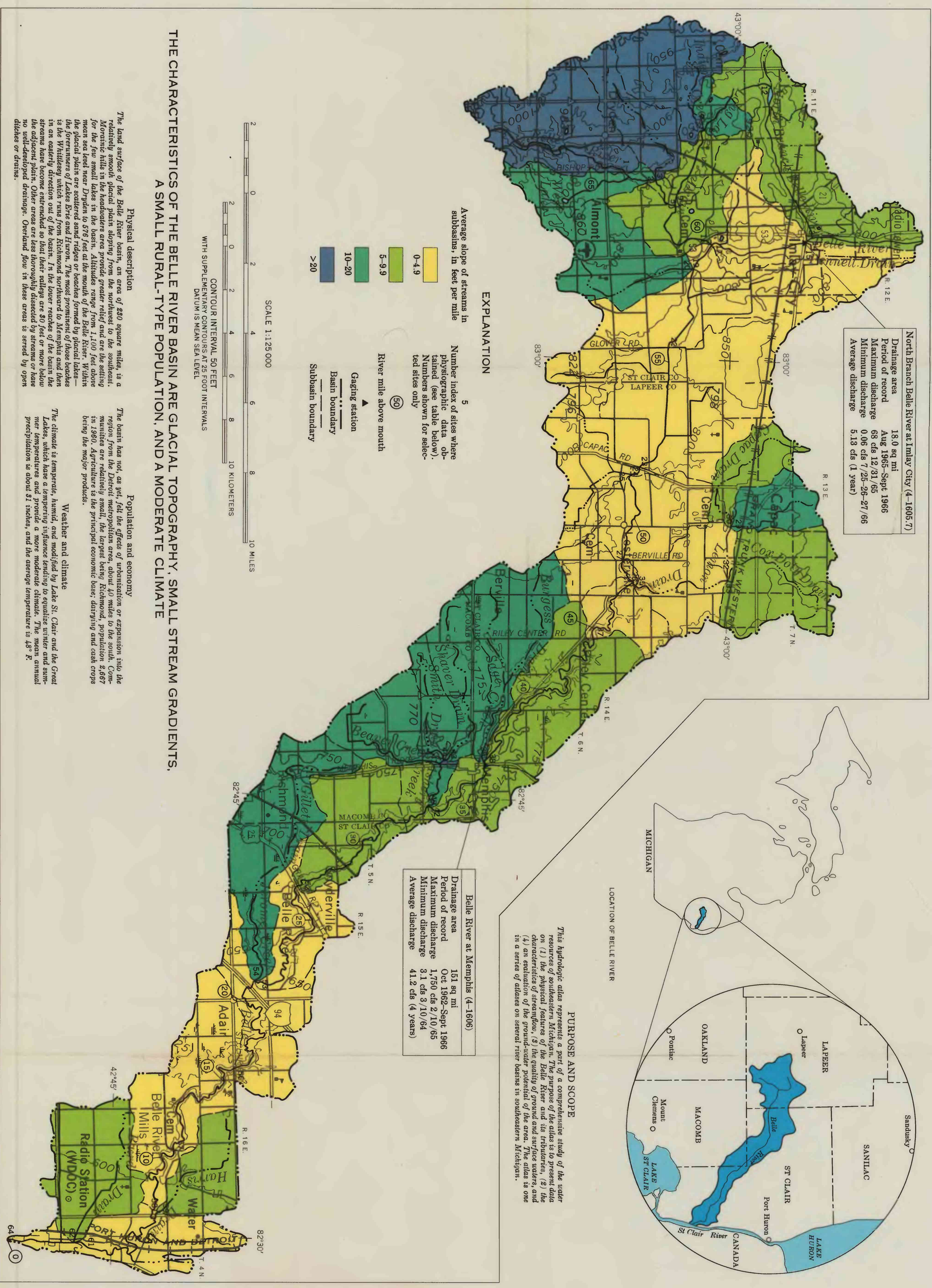


PHYSICAL SETTING



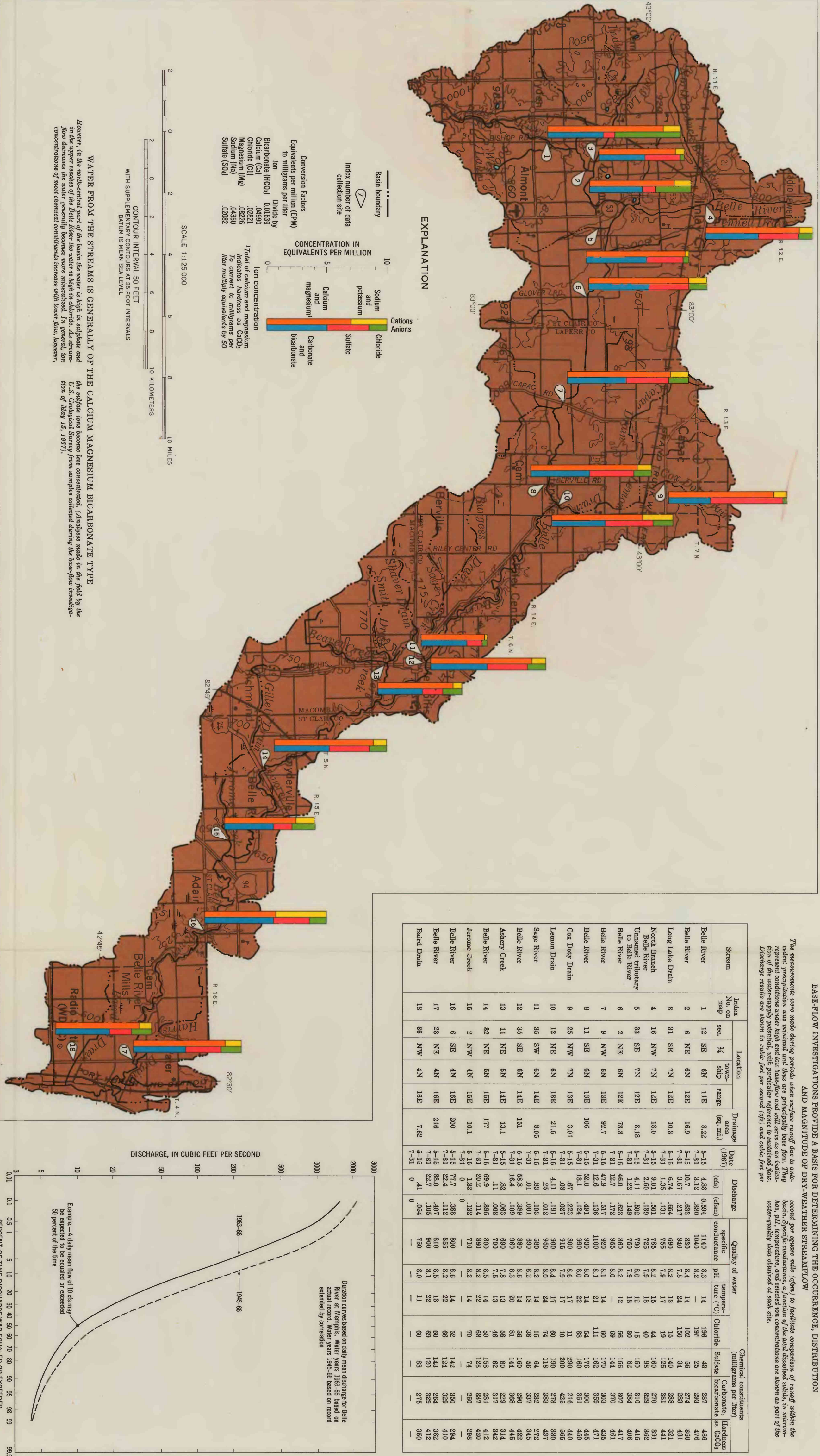
THE CHARACTERISTICS OF THE BELLE RIVER BASIN ARE GLACIAL TOPOGRAPHY, SMALL STREAM GRADIENTS, A SMALL RURAL TYPE POPULATION, AND A MODERATE CLIMATE

The Belle River Basin is a typical example of a glacially formed basin. The topography is characterized by low relief and small stream gradients. The population is small and rural, and the climate is moderate. The basin is bounded by the Belle River to the north and the St. Clair River to the south. The terrain is generally flat, with some low hills. The streams are small and have low gradients. The population is concentrated in the western part of the basin. The climate is temperate, with moderate rainfall and moderate temperatures.

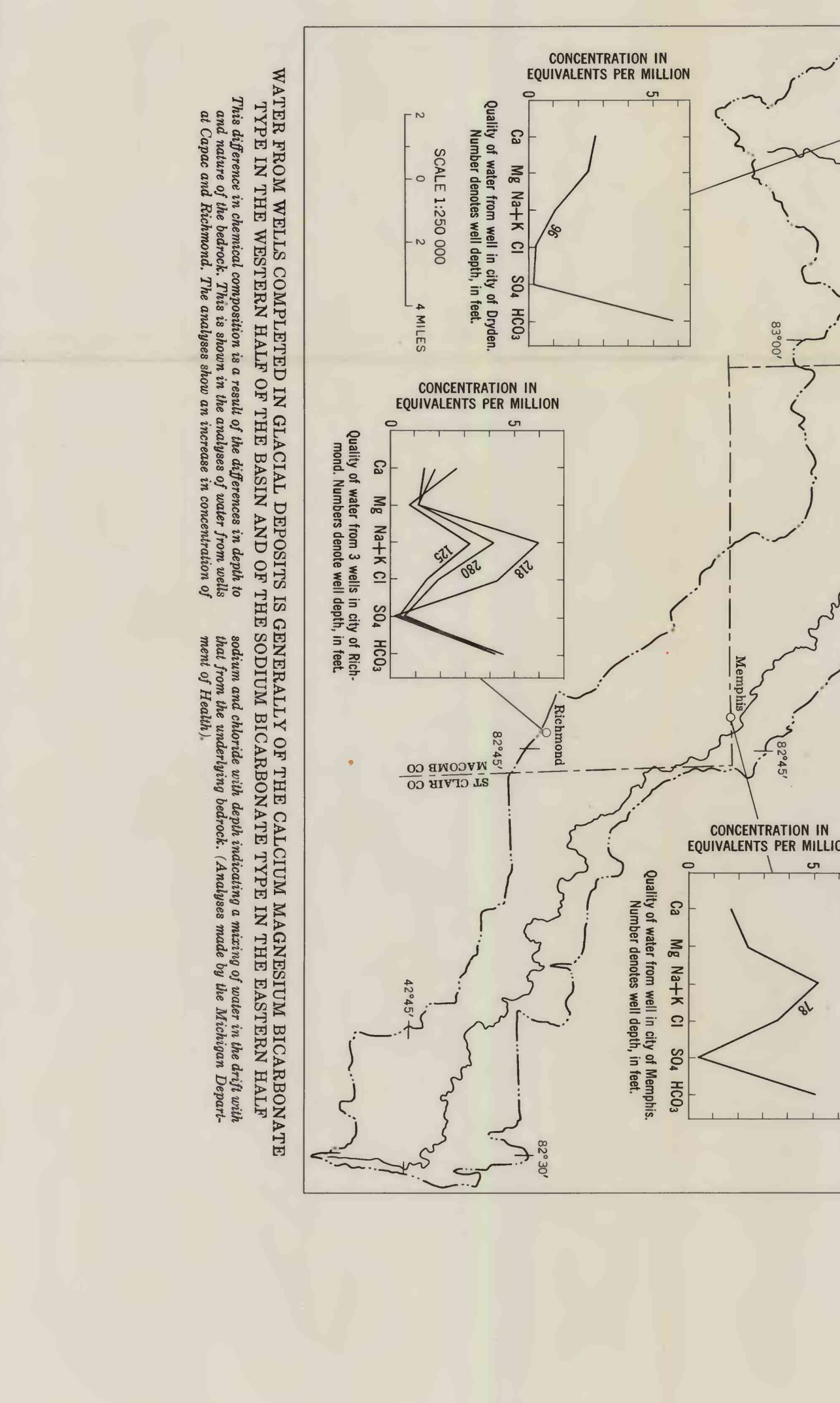
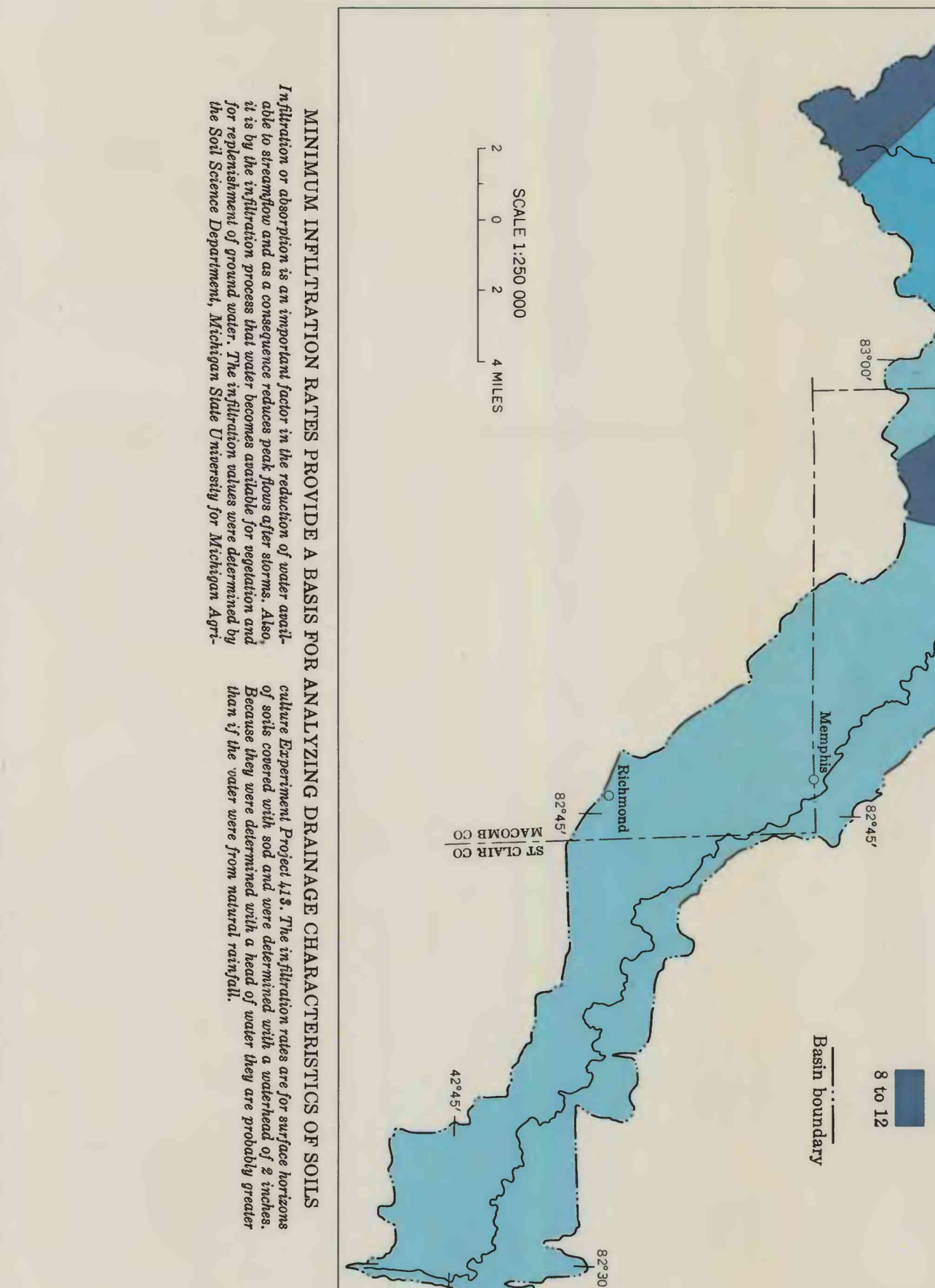
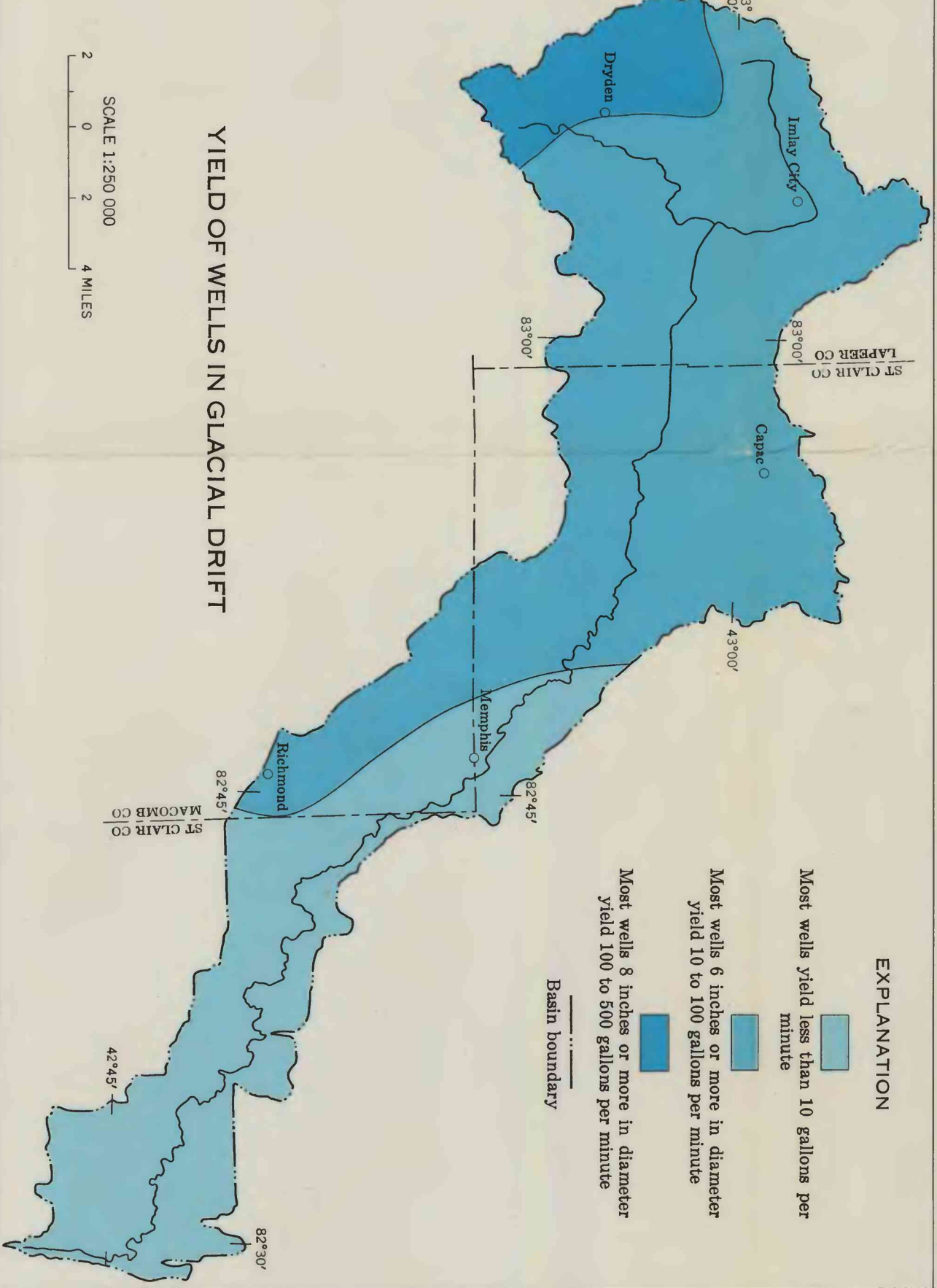
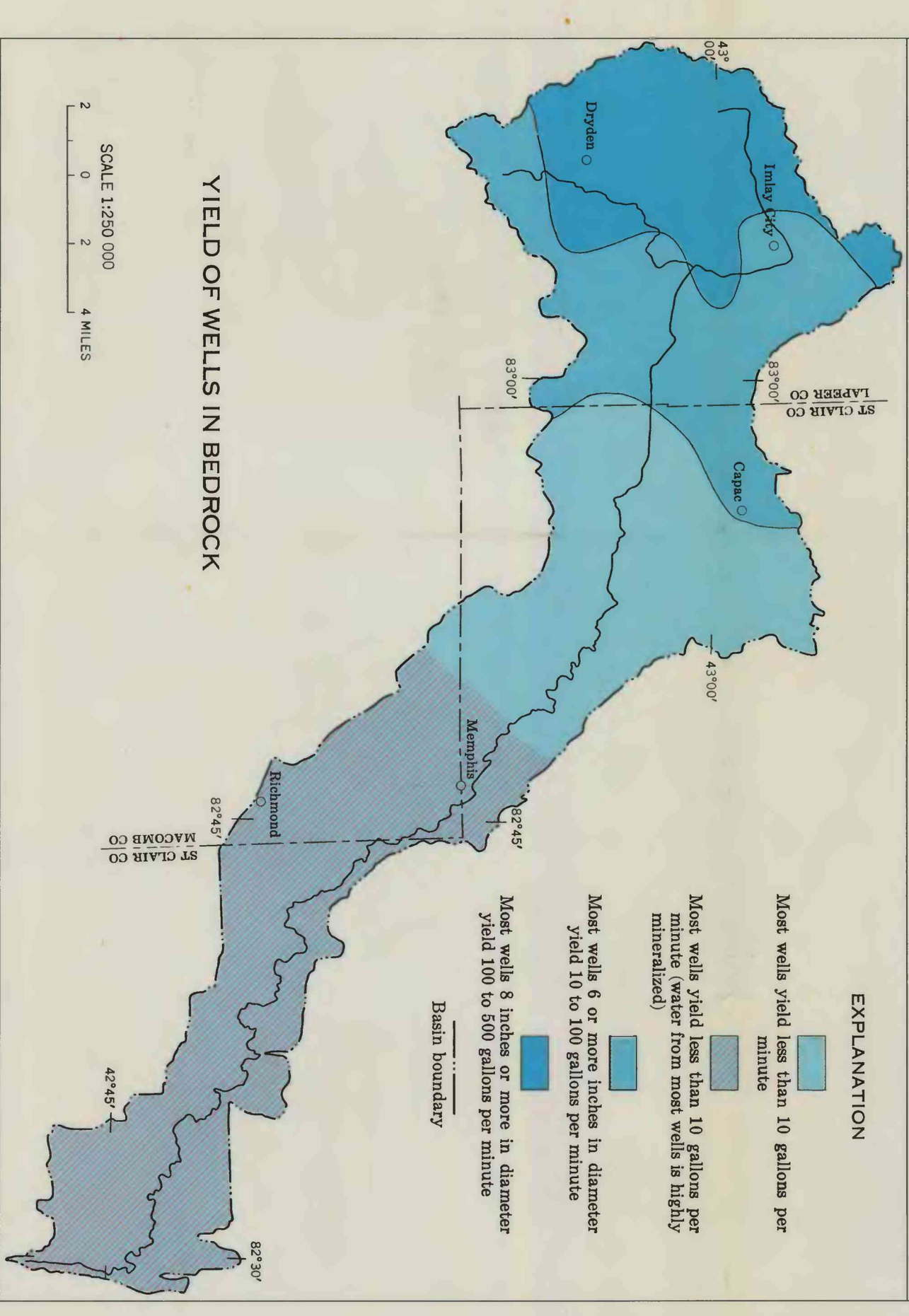
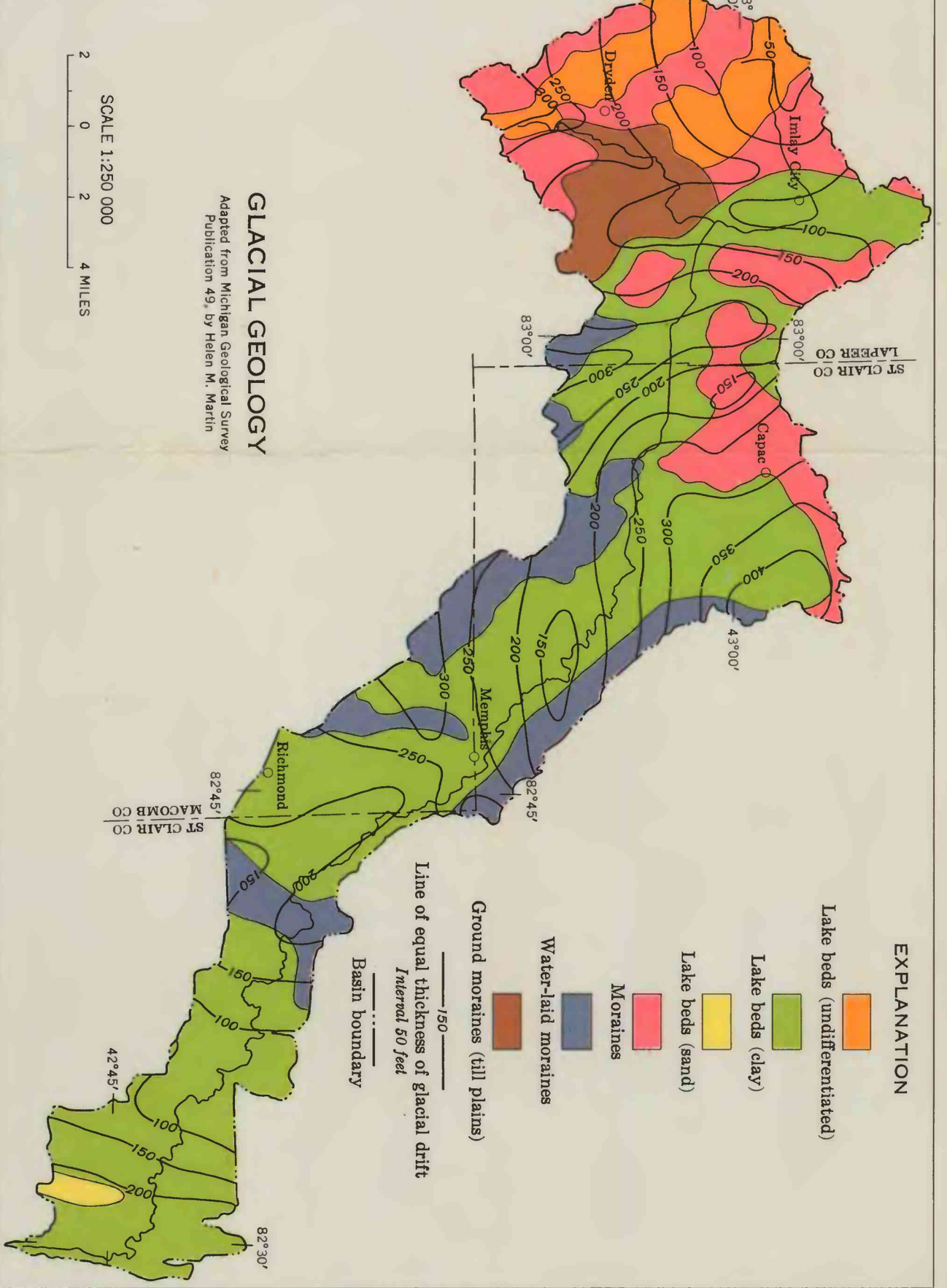
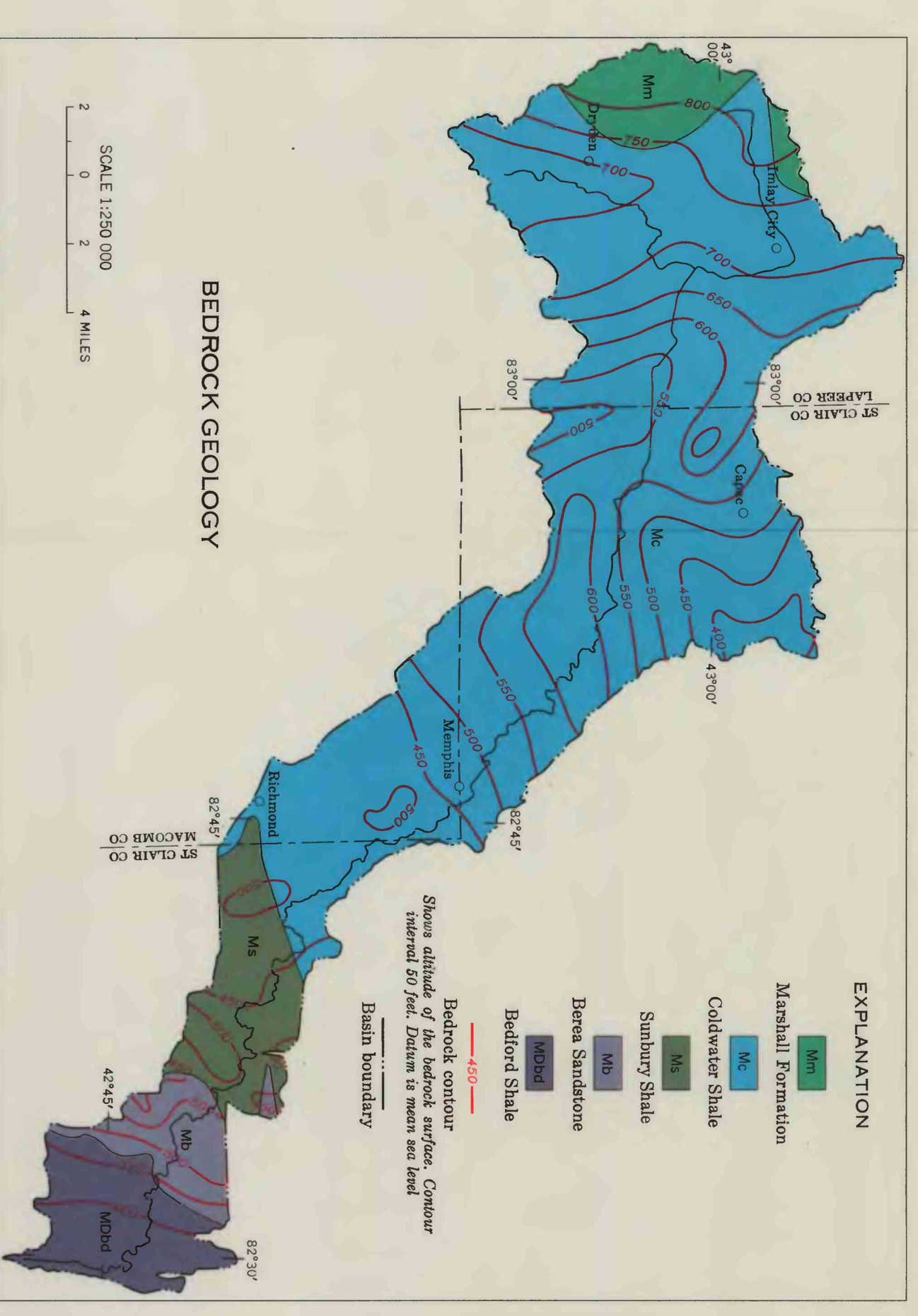
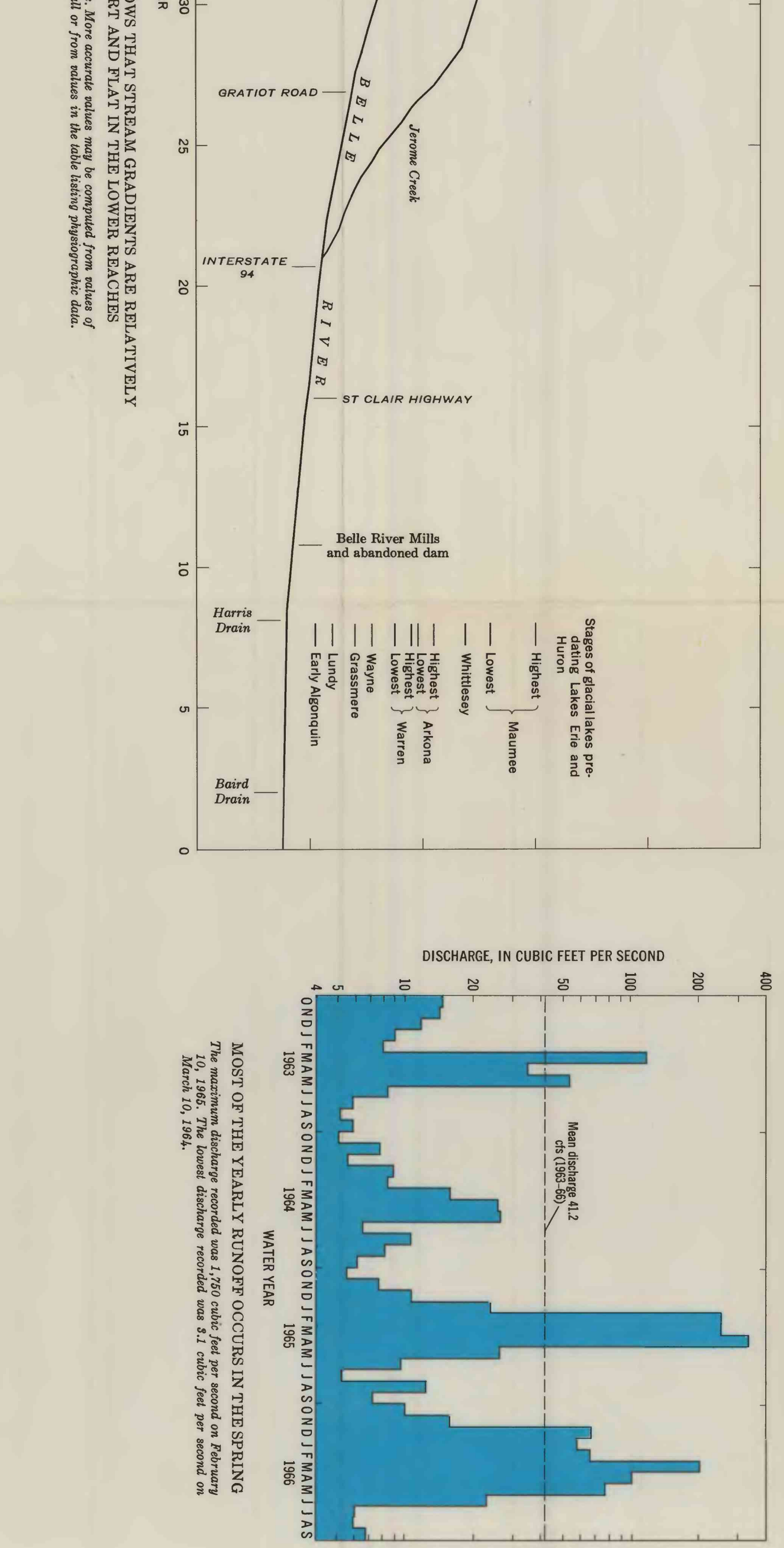
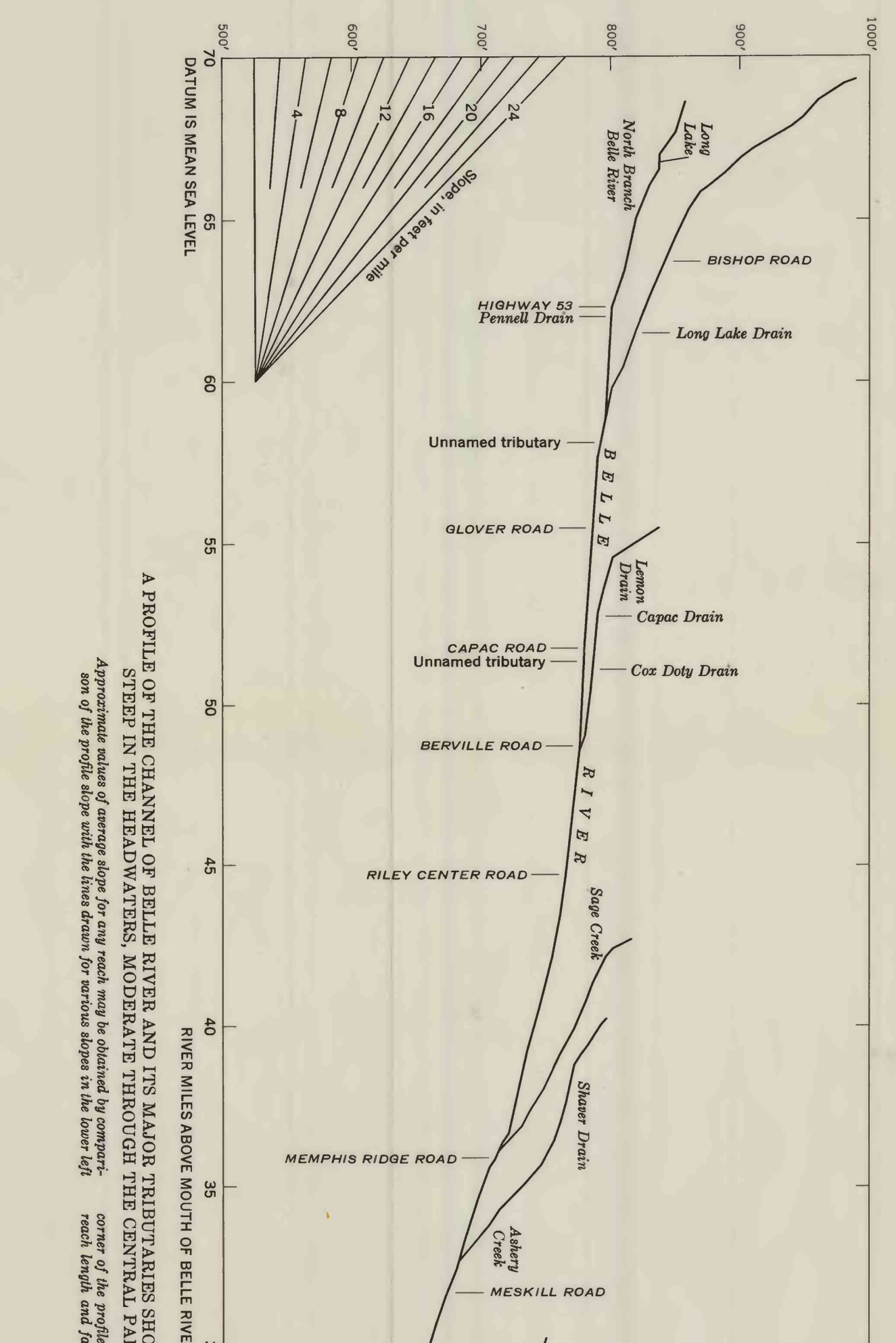
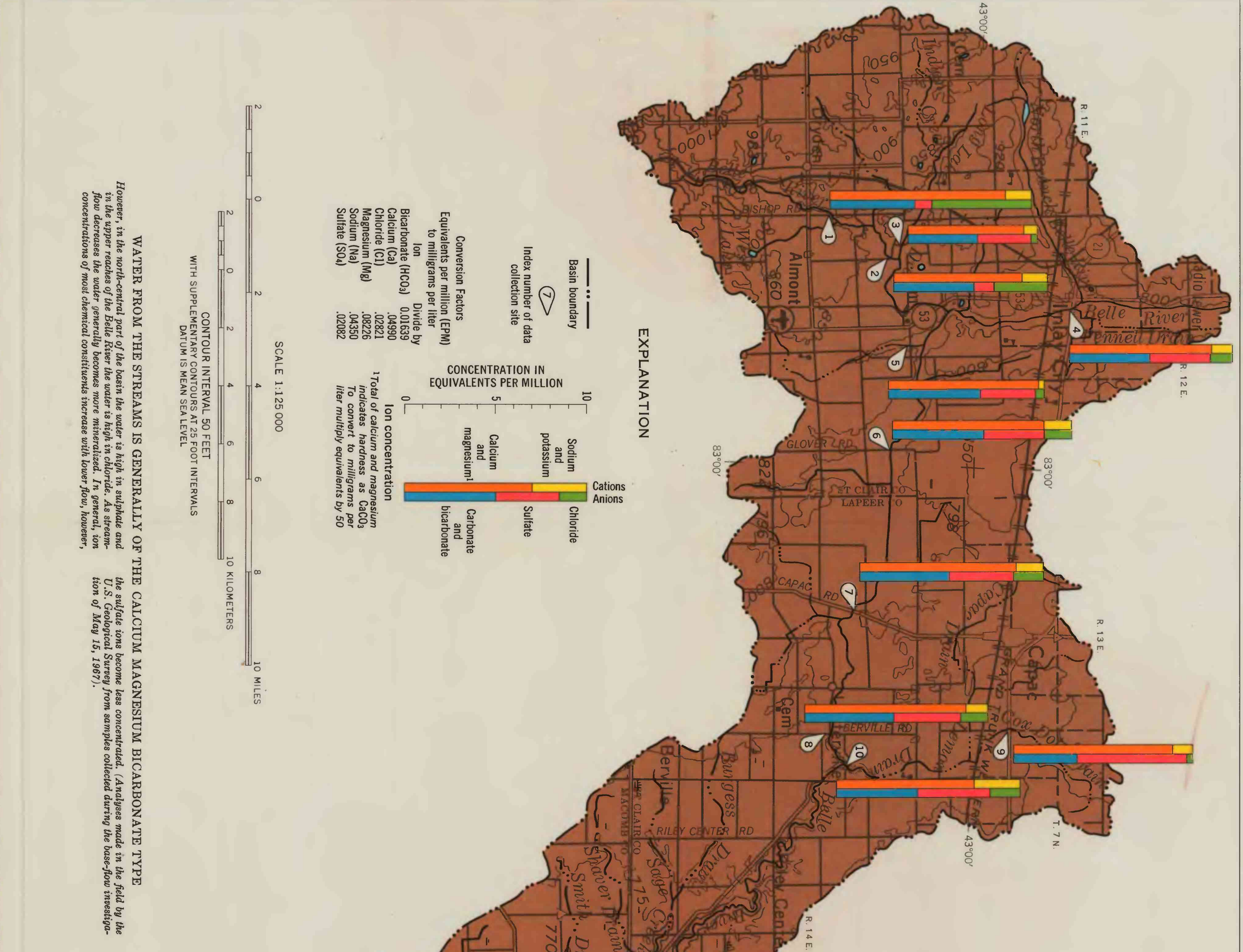
PHYSIOGRAPHIC DATA FOR SELECTED LOCATIONS IN BASIN

| No. | Name and location | Elevation (ft.) | | | Population (1950) | Area (sq. mi.) |
|-----|---------------------------------------|-----------------|------|-----------|-------------------|----------------|
| | | Top | Base | at source | | |
| 1 | Belle River at Belle River, N. 14. E. | 328 | 671 | 824 | 200 | 2.4 |
| 2 | Belle River at Ypsilanti, N. 14. E. | 328 | 671 | 824 | 200 | 2.4 |
| 3 | Ypsilanti at Ypsilanti, N. 14. E. | 328 | 671 | 824 | 200 | 2.4 |
| 4 | Ypsilanti at Ypsilanti, N. 14. E. | 328 | 671 | 824 | 200 | 2.4 |
| 5 | Ypsilanti at Ypsilanti, N. 14. E. | 328 | 671 | 824 | 200 | 2.4 |
| 6 | Ypsilanti at Ypsilanti, N. 14. E. | 328 | 671 | 824 | 200 | 2.4 |
| 7 | Ypsilanti at Ypsilanti, N. 14. E. | 328 | 671 | 824 | 200 | 2.4 |
| 8 | Ypsilanti at Ypsilanti, N. 14. E. | 328 | 671 | 824 | 200 | 2.4 |
| 9 | Ypsilanti at Ypsilanti, N. 14. E. | 328 | 671 | 824 | 200 | 2.4 |
| 10 | Ypsilanti at Ypsilanti, N. 14. E. | 328 | 671 | 824 | 200 | 2.4 |
| 11 | Ypsilanti at Ypsilanti, N. 14. E. | 328 | 671 | 824 | 200 | 2.4 |
| 12 | Ypsilanti at Ypsilanti, N. 14. E. | 328 | 671 | 824 | 200 | 2.4 |
| 13 | Ypsilanti at Ypsilanti, N. 14. E. | 328 | 671 | 824 | 200 | 2.4 |
| 14 | Ypsilanti at Ypsilanti, N. 14. E. | 328 | 671 | 824 | 200 | 2.4 |
| 15 | Ypsilanti at Ypsilanti, N. 14. E. | 328 | 671 | 824 | 200 | 2.4 |
| 16 | Ypsilanti at Ypsilanti, N. 14. E. | 328 | 671 | 824 | 200 | 2.4 |
| 17 | Ypsilanti at Ypsilanti, N. 14. E. | 328 | 671 | 824 | 200 | 2.4 |
| 18 | Ypsilanti at Ypsilanti, N. 14. E. | 328 | 671 | 824 | 200 | 2.4 |
| 19 | Ypsilanti at Ypsilanti, N. 14. E. | 328 | 671 | 824 | 200 | 2.4 |
| 20 | Ypsilanti at Ypsilanti, N. 14. E. | 328 | 671 | 824 | 200 | 2.4 |
| 21 | Ypsilanti at Ypsilanti, N. 14. E. | 328 | 671 | 824 | 200 | 2.4 |
| 22 | Ypsilanti at Ypsilanti, N. 14. E. | 328 | 671 | 824 | 200 | 2.4 |

SURFACE WATER



GROUND WATER



WATER RESOURCES OF THE BELLE RIVER BASIN, SOUTHEASTERN MICHIGAN

By
R. L. Knauth
1959