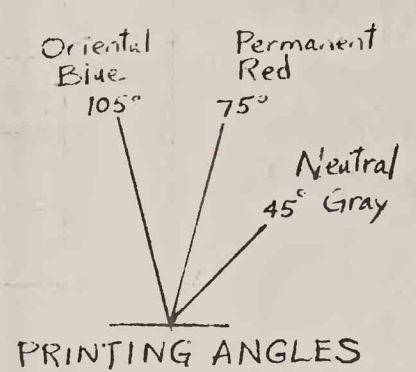


COLOR AND PATTERN GUIDE

Div. No. W68301		Title G-GW Gr Rapids Minn		Publication Scale 1:48,000		Series HA-322	
Office Menlo Park		Date 4-12-68	Designer S. L. K.		<input type="checkbox"/> Map	<input type="checkbox"/> Figure	Sheet 2 of 4
Description		Sym- bols	Perm. Oriental Base Red Blue Gray		(ZIP)	Comments	
I-D continued					Black	SHEET 1 OF 2 CONTINUED	
Glacial area outlines # concealed contacts		---				as shown .012"	
I-E Hole numbering		shading	5				
I-G Section A-A'		lake top water	—scribe 3				
Undifferentiated drift			- NO COLOR -				
Coleraine Fm		Ku				omit lithology Z-115	
Virginia Argillite		pEv		3		lithology as shown	
Biwabi Fm		pCb	5				
Pokegama Quartzite		pEp				1001 and Z-305	
Giants Range Granite (was pCi)		pEg				GC-85 lithology shown + Z-115	
Ely Greenstone		pCe					
I-F, I-I, I-H section B-B', C-C', D-D'		wells				.010"	
Till		dark green		132			
Sand		pink	A7 +3				
Silt		bright pink				Z-306	
Clay		purple	3	3			
Till		yellow				hand scribe	
Till		gold	119 +5				
Buried outwash		red lines				KQ-1	
Bedrock units			same as listed for section A-A'				
SHEET 1		PEELCOATS	2	2	1		
				+ scribe			



PRINTING ANGLES

Peelcoats: Perm Red A7+3  
 Perm Red 7, 5, 3, 404.  
 Oriental patterns  
 Oriental 1, 3, 5.  
 Neutral Gray 3, 132