

FIGURE 6.—MEDIAN ANNUAL MAXIMUM STREAM TEMPERATURES FOR THE PERIOD 1960-67

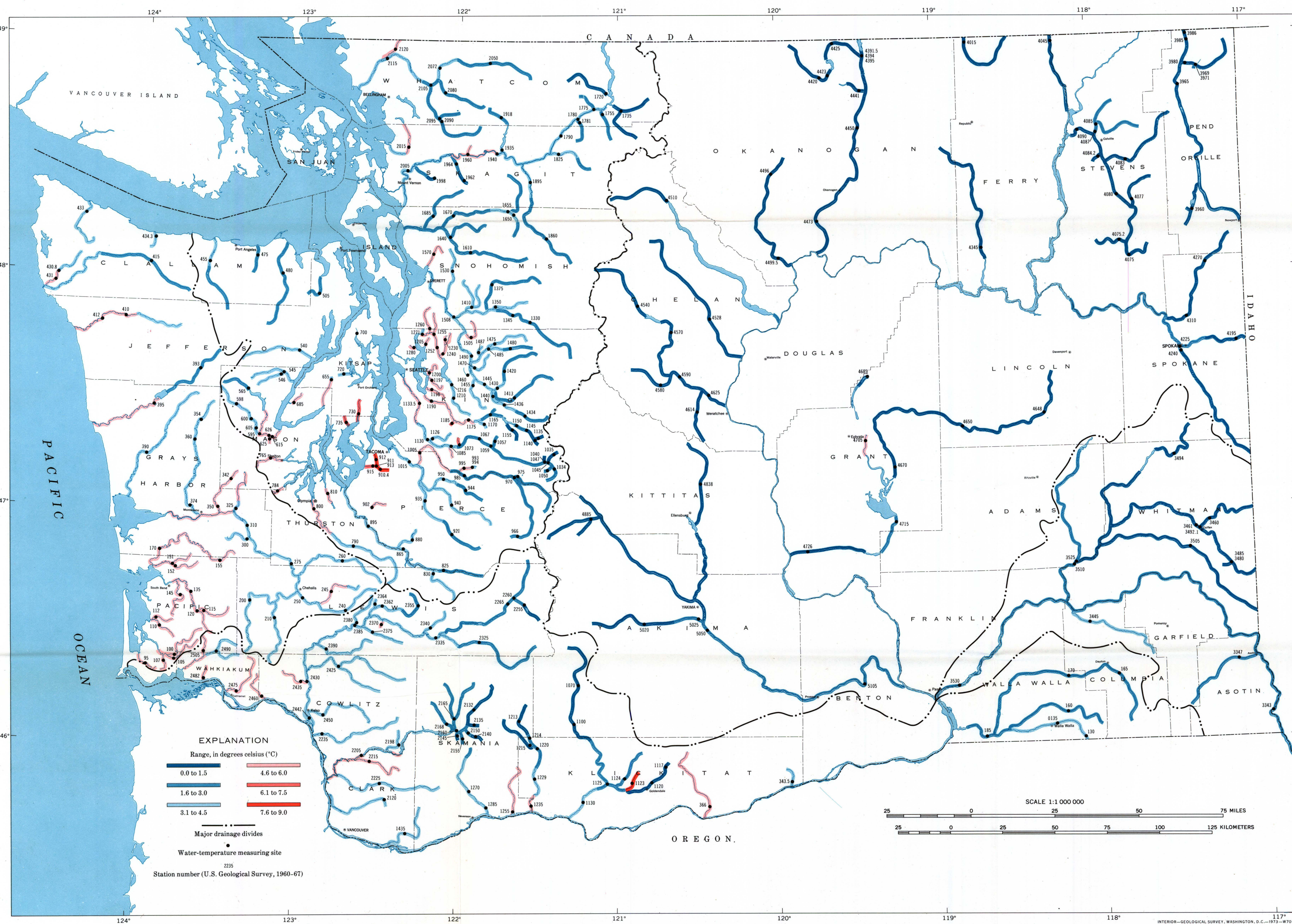


FIGURE 7.—MEDIAN ANNUAL MINIMUM STREAM TEMPERATURES FOR THE PERIOD 1960-67

# STREAM TEMPERATURES IN WASHINGTON STATE

By  
M. R. Collings and G. T. Higgins  
1973

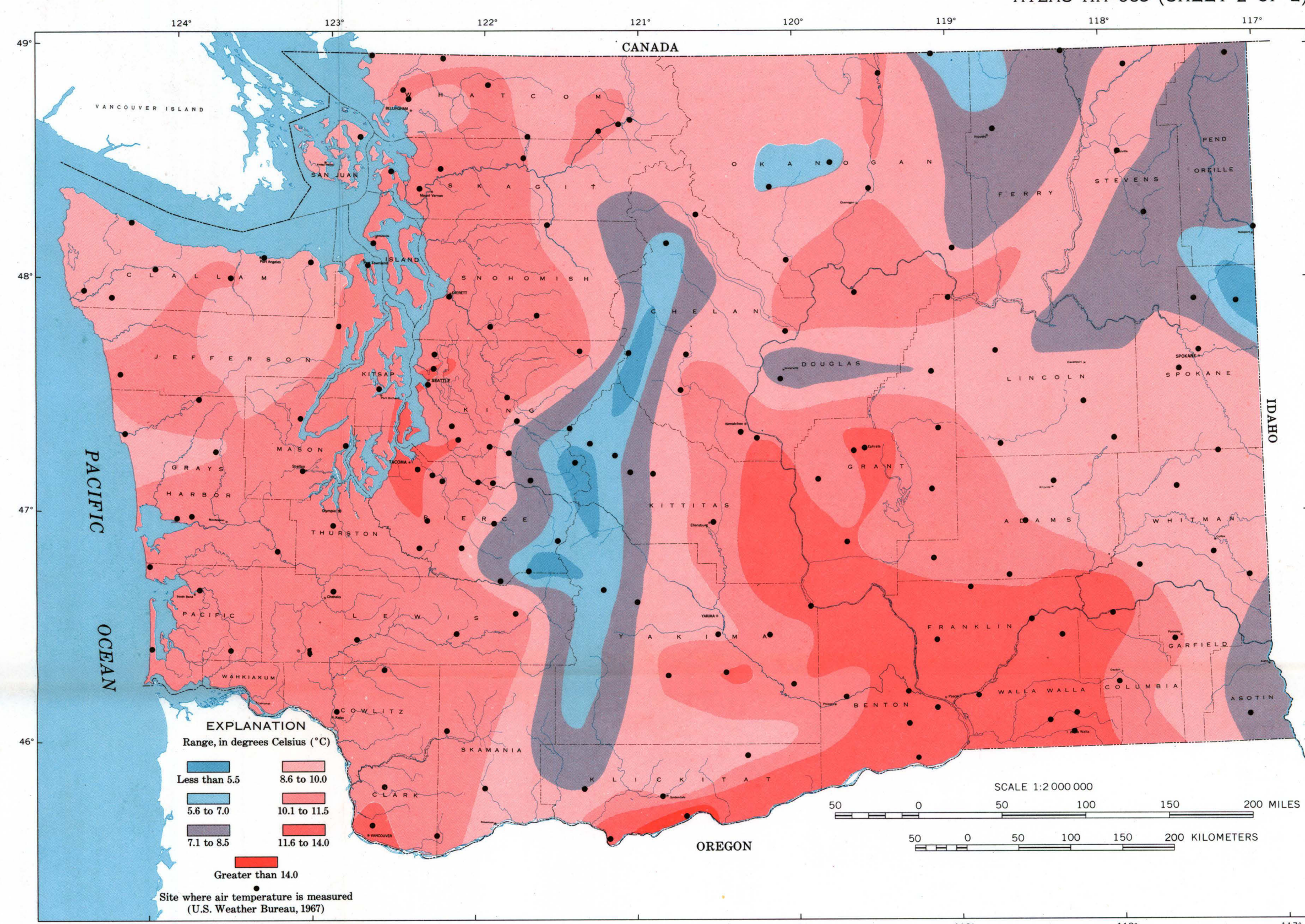


FIGURE 4.—MEDIAN ANNUAL AIR TEMPERATURES FOR THE NORMAL YEAR

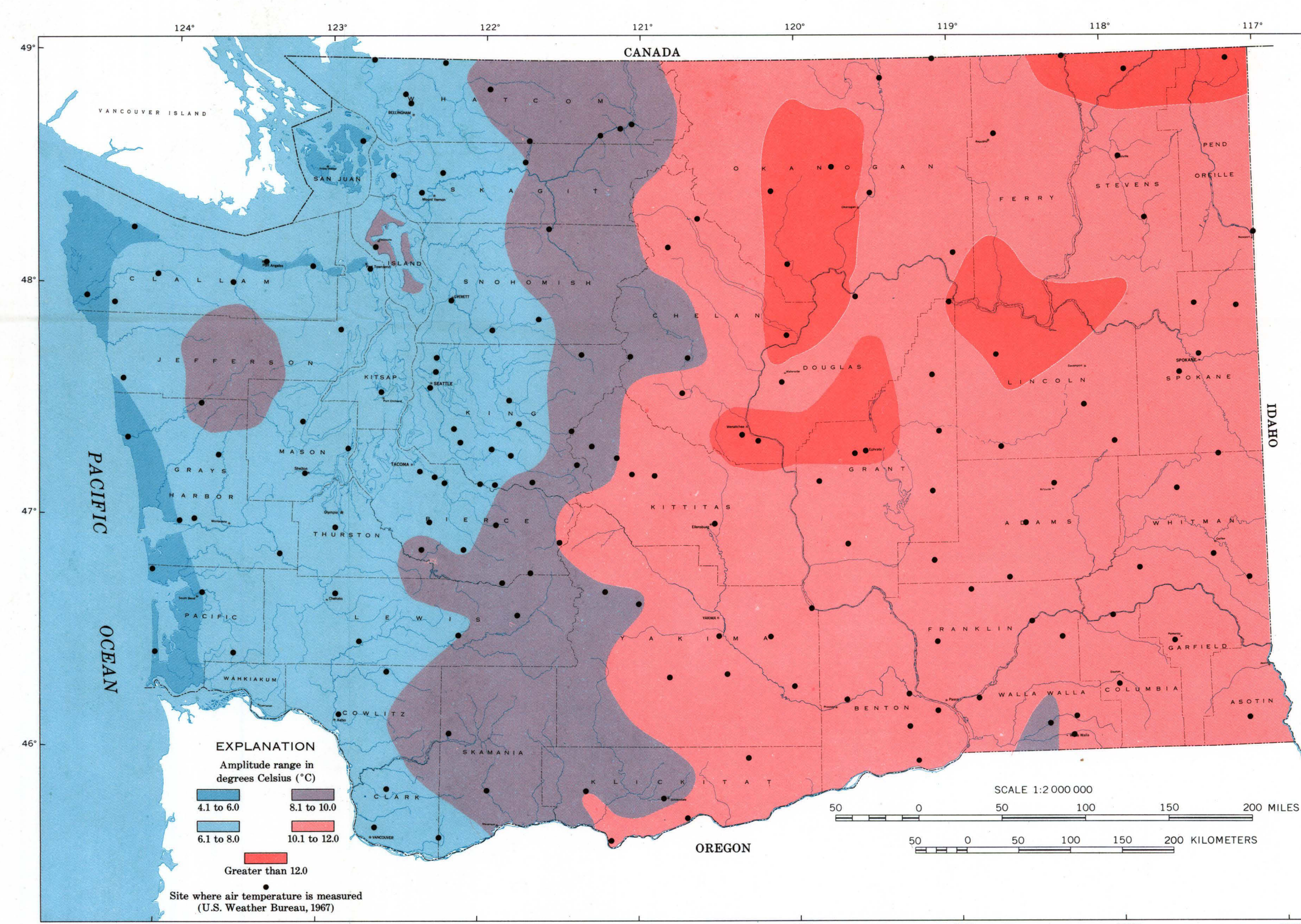


FIGURE 5.—ANNUAL AMPLITUDE OF AIR TEMPERATURES FOR THE NORMAL YEAR

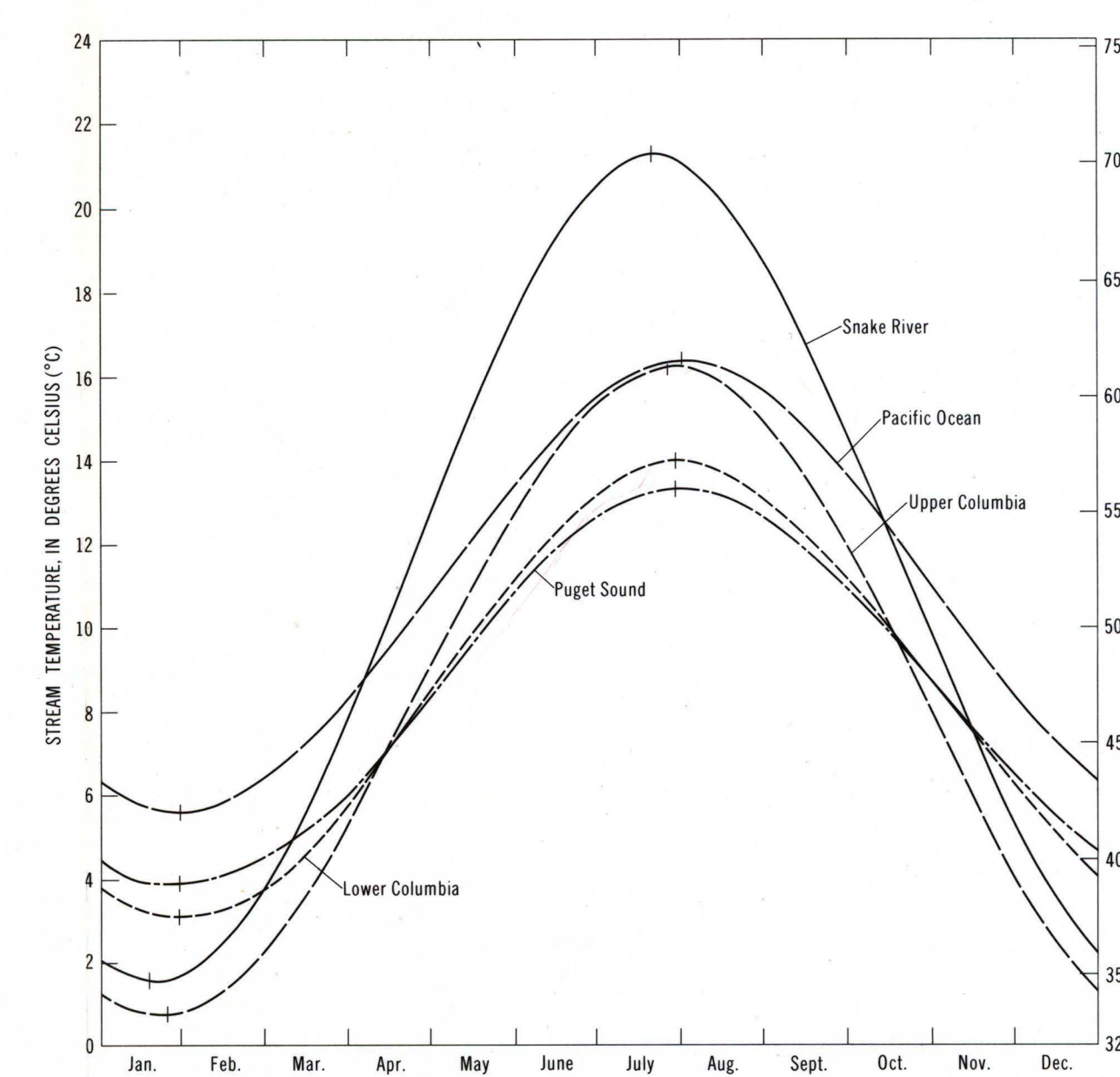


FIGURE 8.—AVERAGE HARMONIC CURVES FOR STREAM TEMPERATURES IN THE MAJOR DRAINAGES OF THE STATE