

GAYS MILLS—View looking east at upstream side of Highway 171 bridge



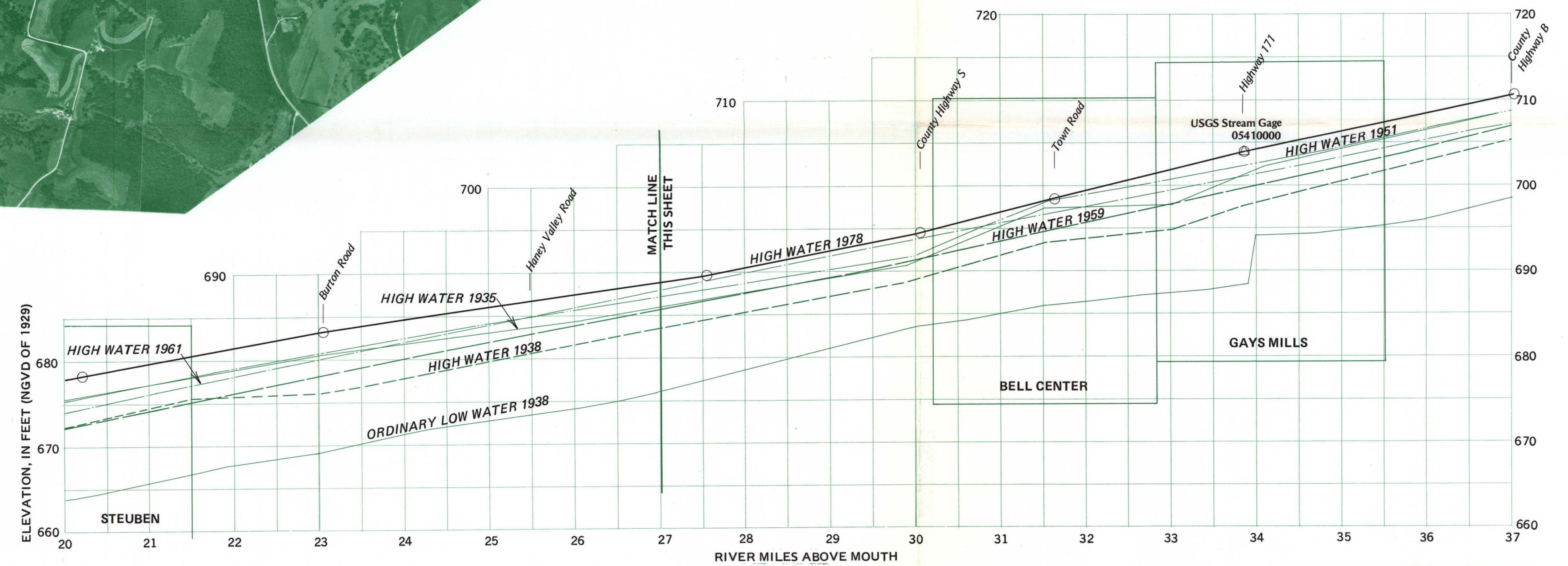
KICKAPOO RIVER VALLEY—View from east bank between Gays Mills and Steuben



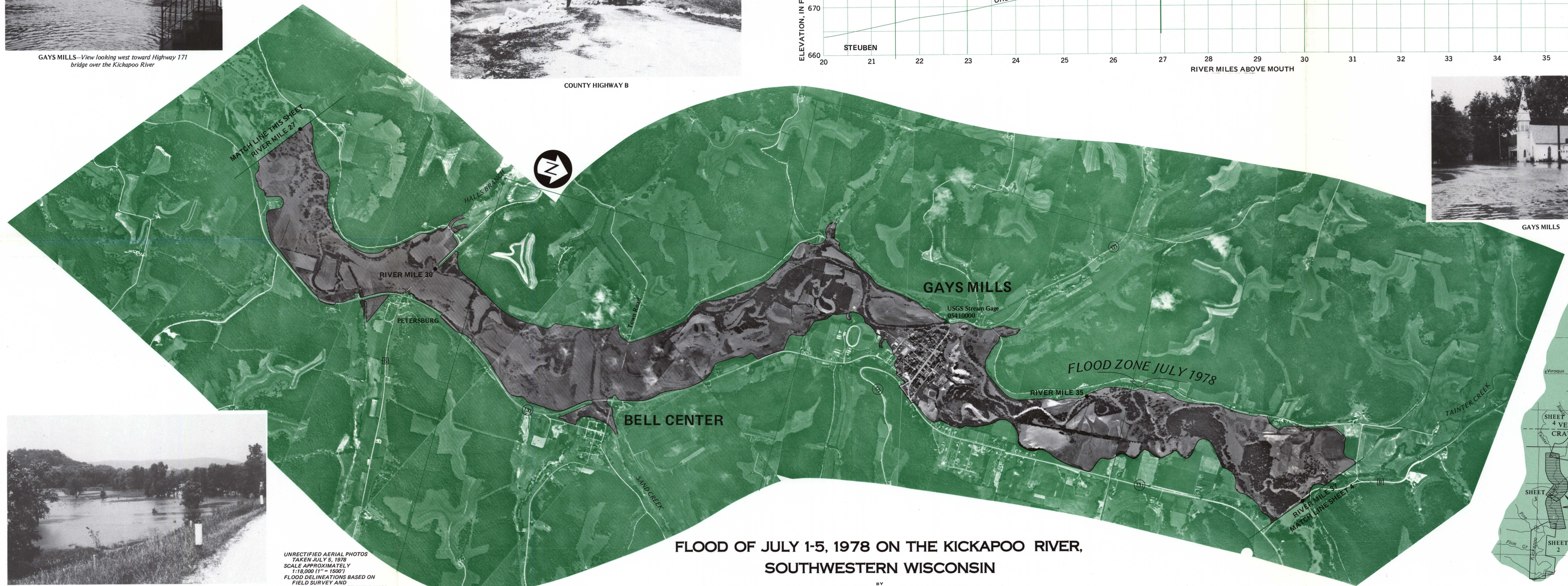
GAYS MILLS—View looking west toward Highway 171 bridge over the Kickapoo River



COUNTY HIGHWAY B



GAYS MILLS



KICKAPOO RIVER—Between Gays Mills and Steuben

UNRECTIFIED AERIAL PHOTOS
TAKEN JULY 5, 1978
SCALE APPROXIMATELY
1:18,000 (1" = 1800')
FLOOD DELINEATIONS BASED ON
FIELD SURVEY AND
LARGE SCALE TOPOGRAPHIC MAPS

FLOOD OF JULY 1-5, 1978 ON THE KICKAPOO RIVER, SOUTHWESTERN WISCONSIN

BY
P.E. HUGHES, J.S. HANNUKSELA, AND W.J. DANCHUK
1981

