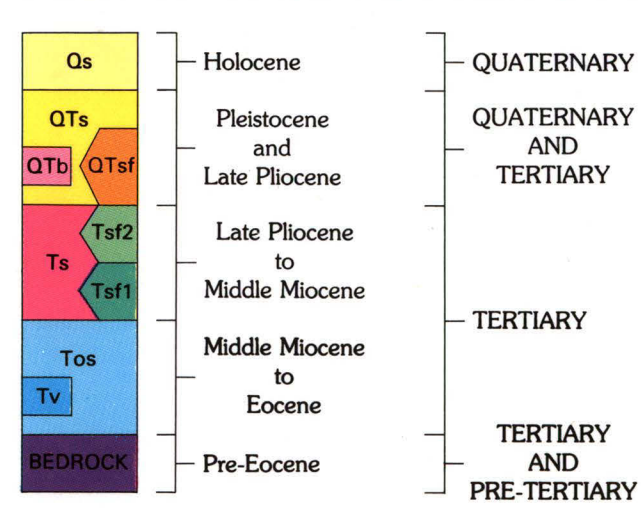


EXPLANATION

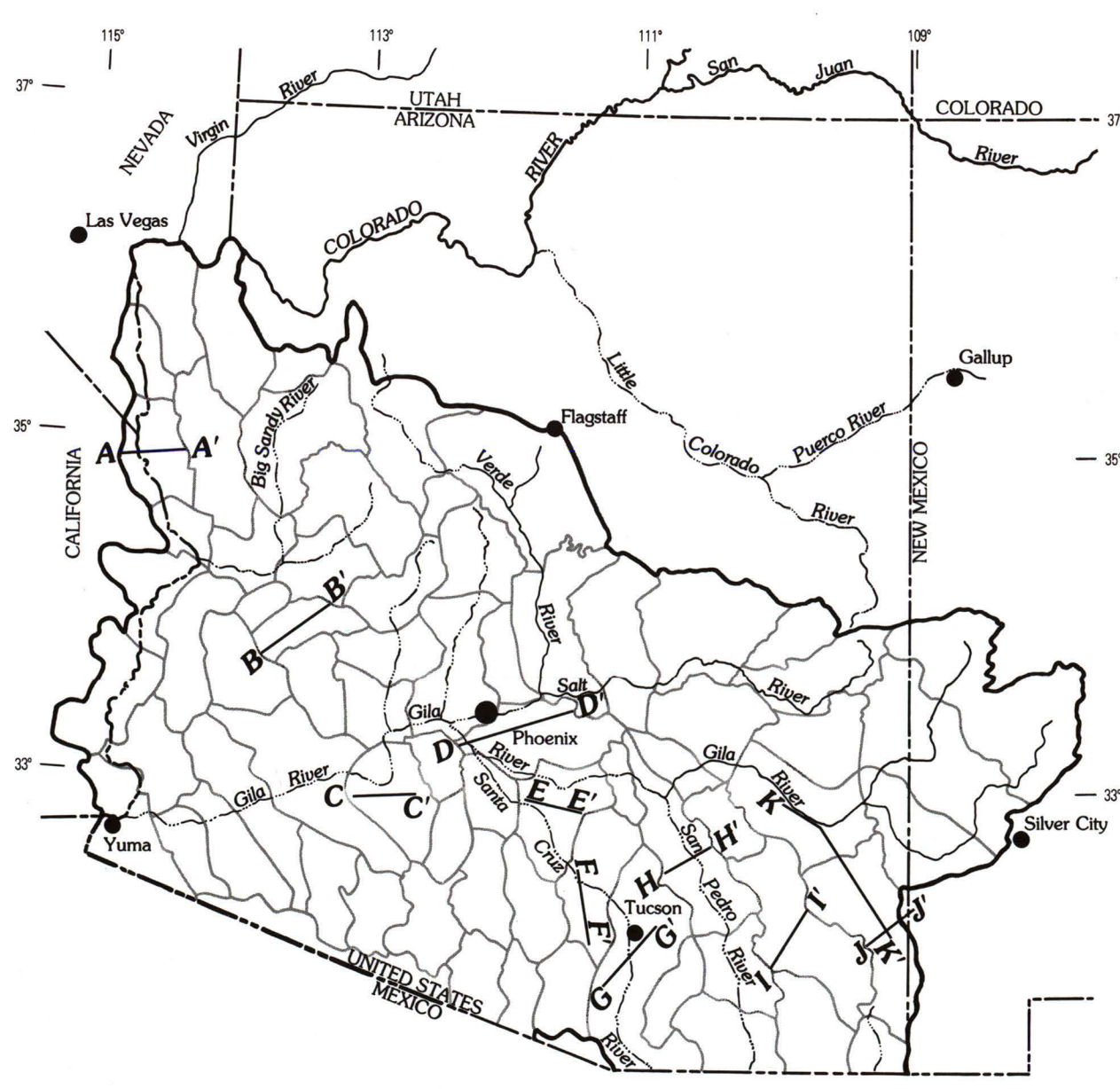
CORRELATION OF GEOLOGIC SECTION UNITS



DESCRIPTION OF SECTION UNITS

- STREAM ALLUVIUM**
 - Qs Unconsolidated alluvial deposits along major streams and washes; includes silt and sand in Wilcox basin
- UPPER BASIN FILL**
 - QTs Unconsolidated to moderately consolidated alluvial deposits. Grades from coarse- to fine-grained sediments toward the center of most basins
 - QTf Basin-center fine-grained facies. Greater than 60 percent fine-grained sediments. Lake deposits in Wilcox, Safford, and San Simon basins
 - QTb Basalt flows
- LOWER BASIN FILL**
 - Ts Weakly to highly consolidated fanglomerate and alluvial deposits found on the perimeter of most basins. In some places grades rapidly into the fine-grained facies near major basin faults. Underlies the fine-grained facies over extensive areas of many basins
 - Tsf Basin-center fine-grained facies, weakly to moderately consolidated silt and clay, generally 55 to 80 percent fine-grained sediments
 - Tst Basin-center fine-grained facies, moderately consolidated silt and clay, greater than 80 percent fine-grained sediments; aggradens in many places. Deposited in the central graben of actively subsiding basins. May be in fault contact with older rocks on the margins of the graben. Includes extensively interbedded or massive evaporites in Avra Valley and Safford, San Simon, and Elroy basins
- PRE-BASIN AND RANGE**
 - Tv Moderately to highly consolidated fanglomerate and alluvial deposits and interbedded volcanics that are highly structurally disturbed. Deposited in basins that existed before the Basin and Range structural disturbance and that had a different areal extent than the present-day basins
 - BE Undifferentiated volcanic rocks interbedded with pre-Basin and Range sediments
 - BE BEDROCK Pre-Eocene igneous and metamorphic rocks and pre-Tertiary sedimentary rocks

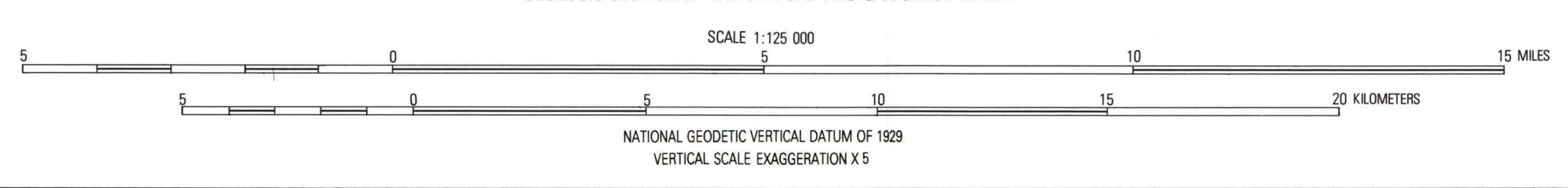
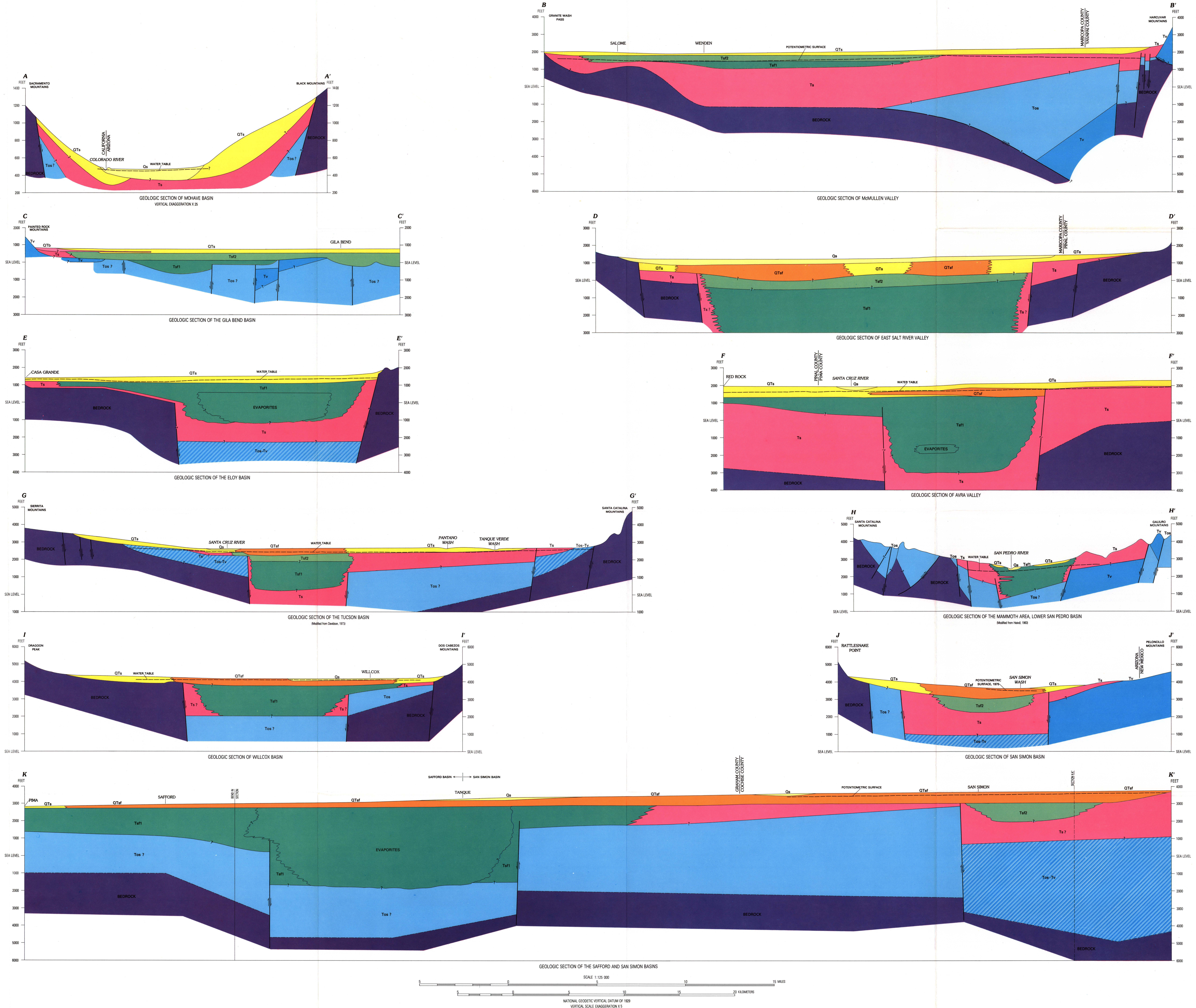
- CONTACT—Quarred where uncertain
- FAULT SHOWING RELATIVE MOVEMENT—Quarred where uncertain
- FACIES CHANGE—Quarred where uncertain
- BEDROCK CONTACT INFERRED FROM GRAVITY-DATA MODELING
- WATER TABLE OR POTENTIOMETRIC SURFACE—Represents altitude of potentiometric surface based on most recent available information



EXPLANATION

A—A' LINE OF SECTION—Approximately located BOUNDARY OF BASIN

MAP SHOWING STUDY AREA AND LOCATION OF GEOLOGIC SECTIONS



DESCRIPTION AND GENERALIZED DISTRIBUTION OF AQUIFER MATERIALS IN THE ALLUVIAL BASINS OF ARIZONA AND ADJACENT PARTS OF CALIFORNIA AND NEW MEXICO

By
Geoffrey W. Freethy, D. R. Pool, T. W. Anderson, and Patrick Tucci
1986

HEP9-83353-1000-1000-1000-1000