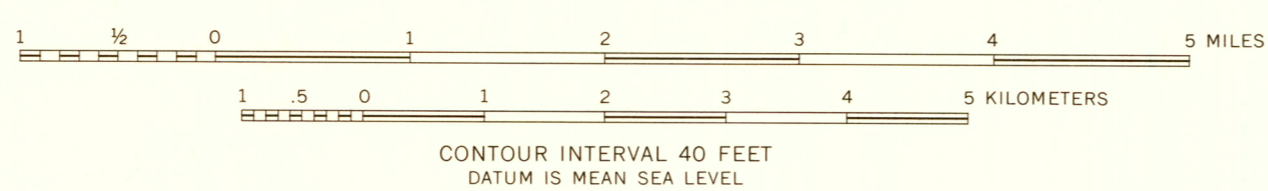


Base by U.S. Geological Survey, 1955

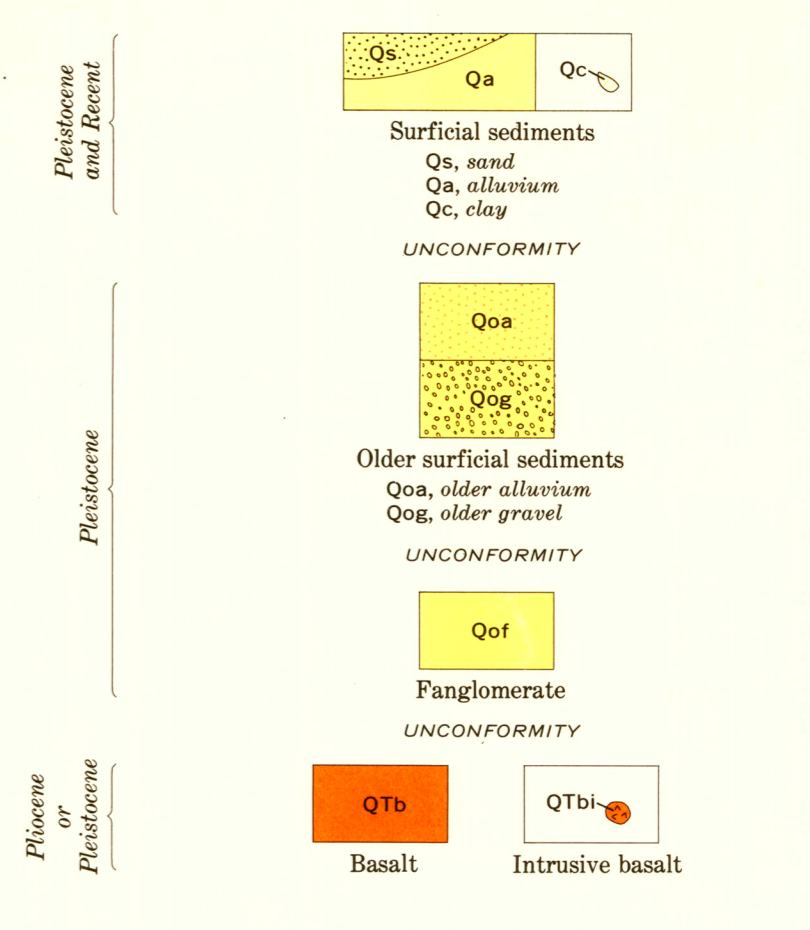
SCALE 1:62,500

Geology by T. W. Dibblee, Jr., 1964

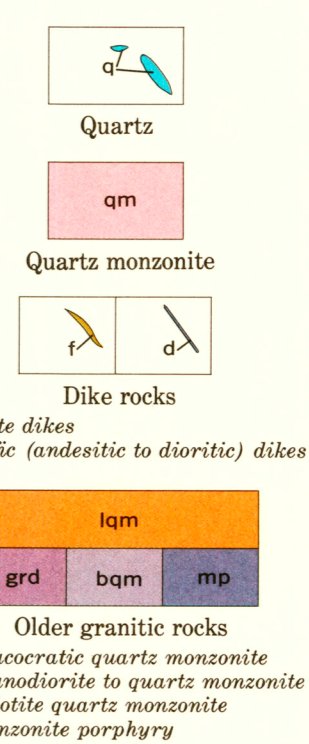


EXPLANATION

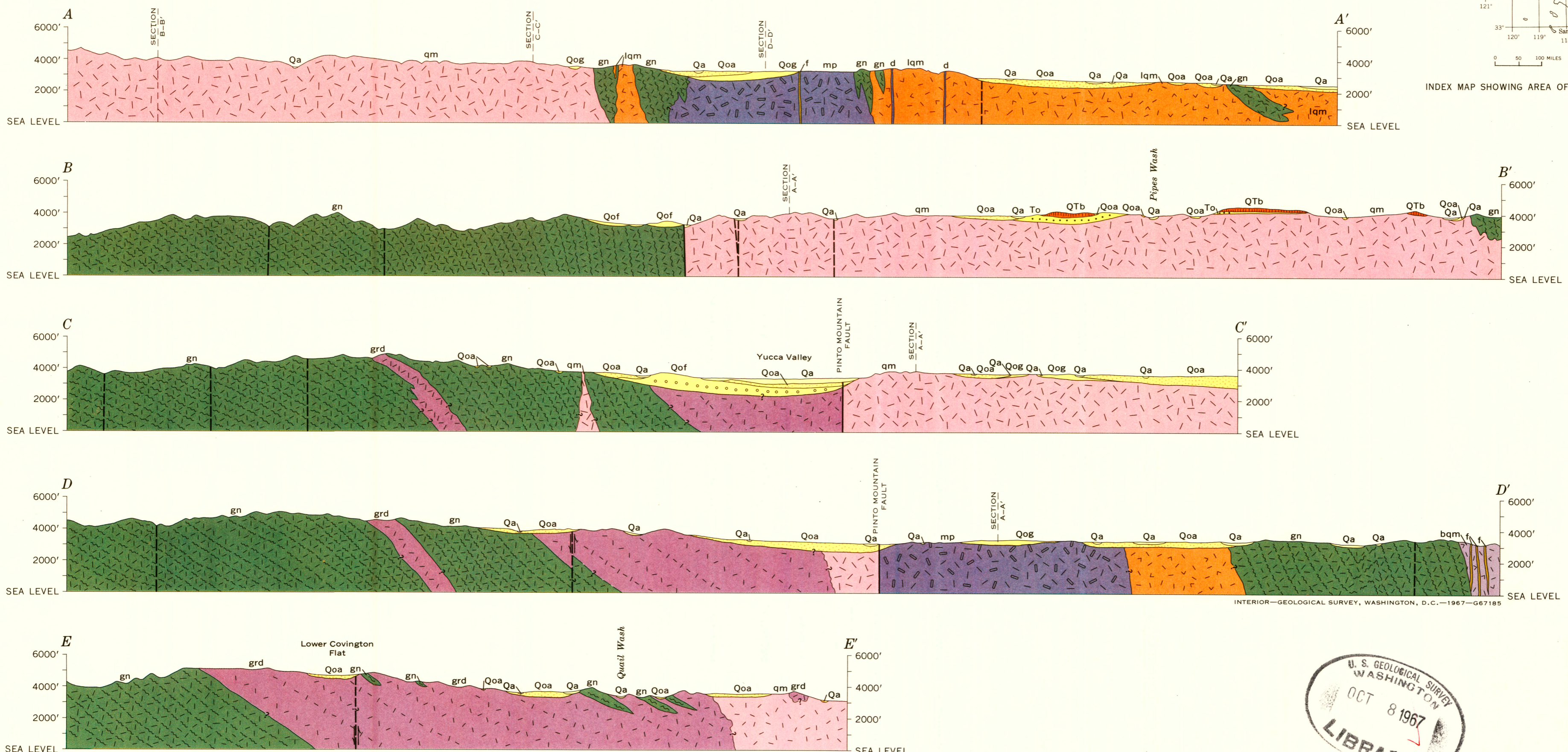
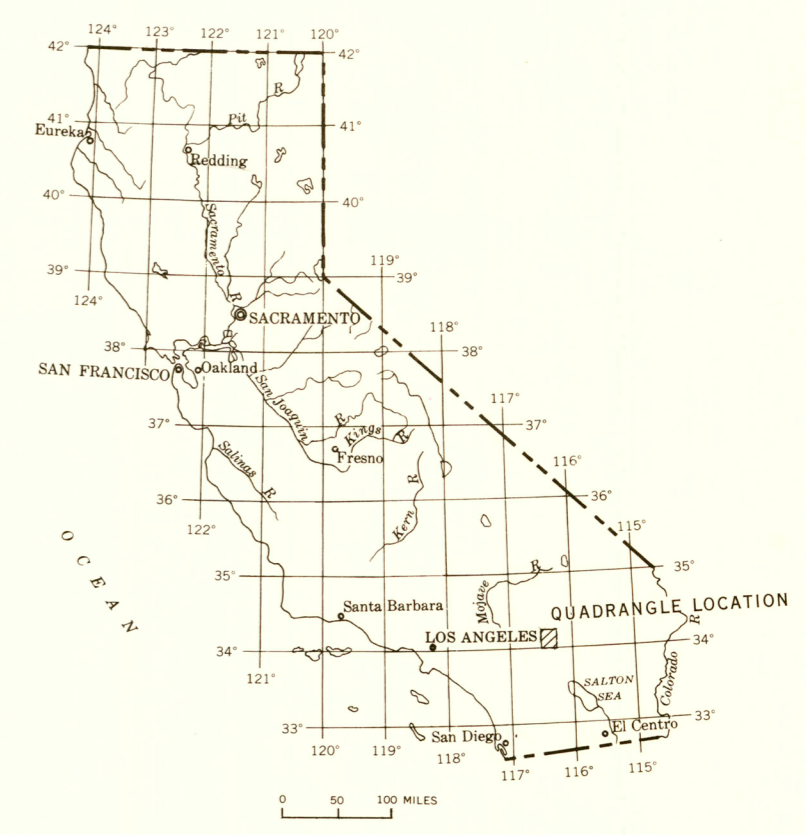
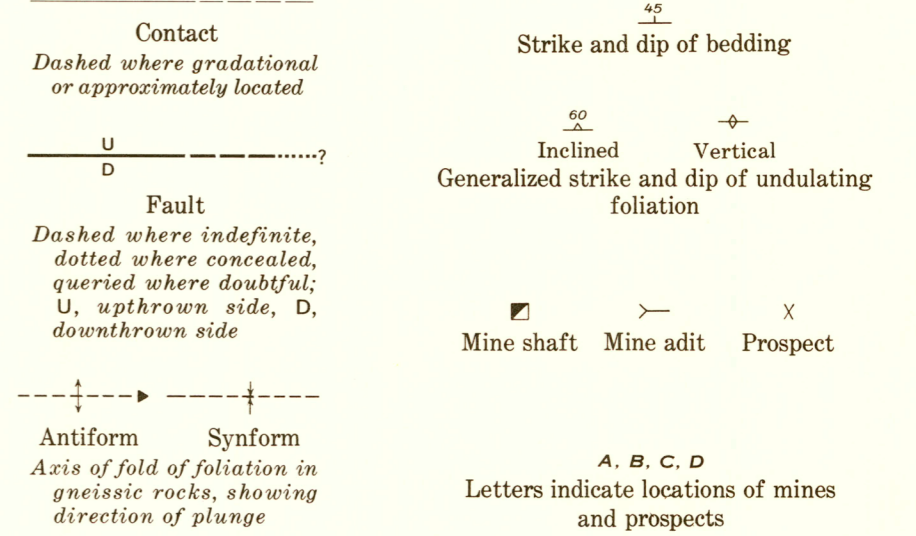
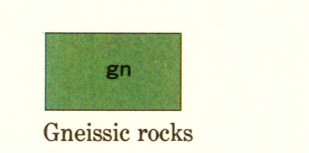
SEDIMENTARY AND VOLCANIC ROCKS



PLUTONIC AND HYPABYSSAL IGNEOUS ROCKS



METAMORPHIC ROCKS



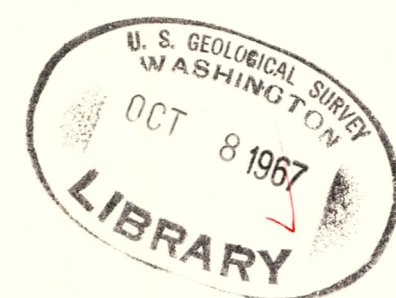
INTERIOR—GEOLOGICAL SURVEY, WASHINGTON, D.C.—1967—667185

GEOLOGIC MAP OF THE JOSHUA TREE QUADRANGLE, SAN BERNARDINO AND RIVERSIDE COUNTIES, CALIFORNIA

By
T. W. Dibblee, Jr.

California (Joshua Tree quad). Geol. 1:62,500 1967.
cop. 1.

1967



M(200)
1-516
G.2