

Table 3.—Statistical summary of the analytical results from 2,243 sieved stream sediments, Silver City 1° x 2° quadrangle

Table 3 data: Statistical summary of analytical results from 2,243 sieved stream sediments. Includes element name, number of observations, range, maximum, minimum, arithmetic mean, standard deviation, and percentile distribution (B, L, N, G, 25th, 50th, 75th, 85th, 90th, 95th, 99th).

Table 8.—Comparison of selected trace metals in manganese-iron oxide-rich heavy-mineral-concentrates (magnetic fraction) from four manganese-silver districts in the central mining region

Table 8 data: Comparison of selected trace metals in manganese-iron oxide-rich heavy-mineral-concentrates. Table with columns for element name, sample number, and various concentration values.

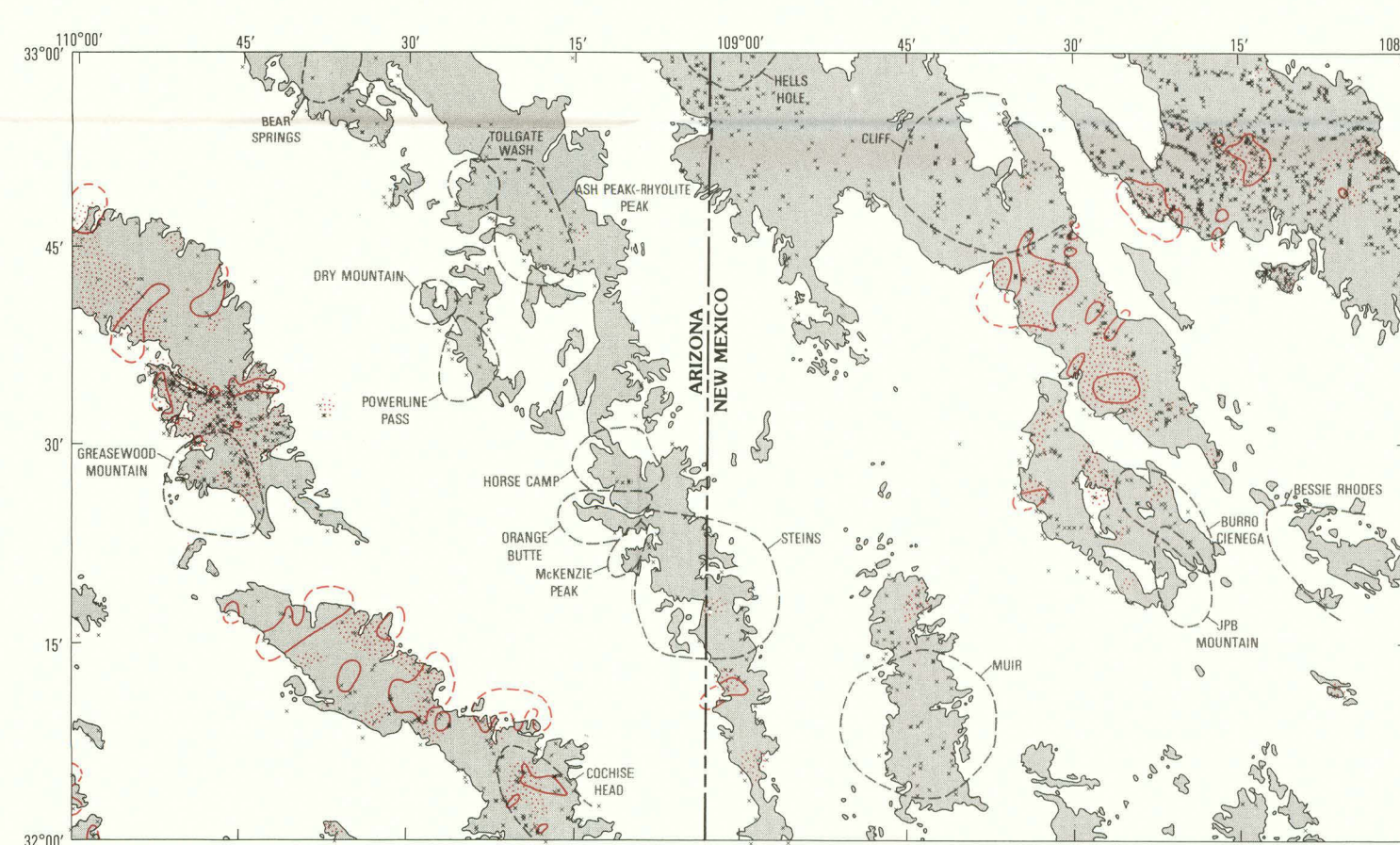
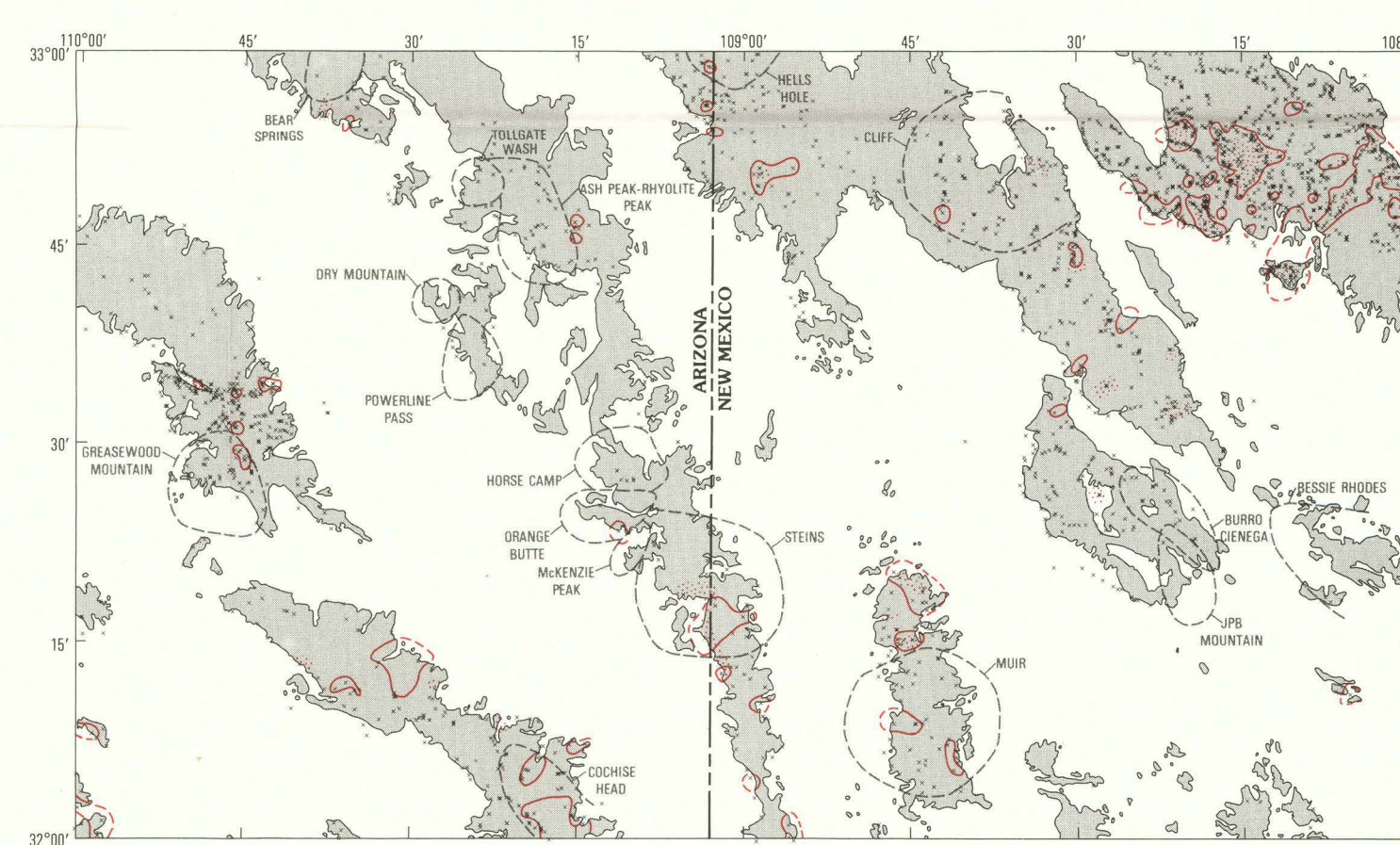
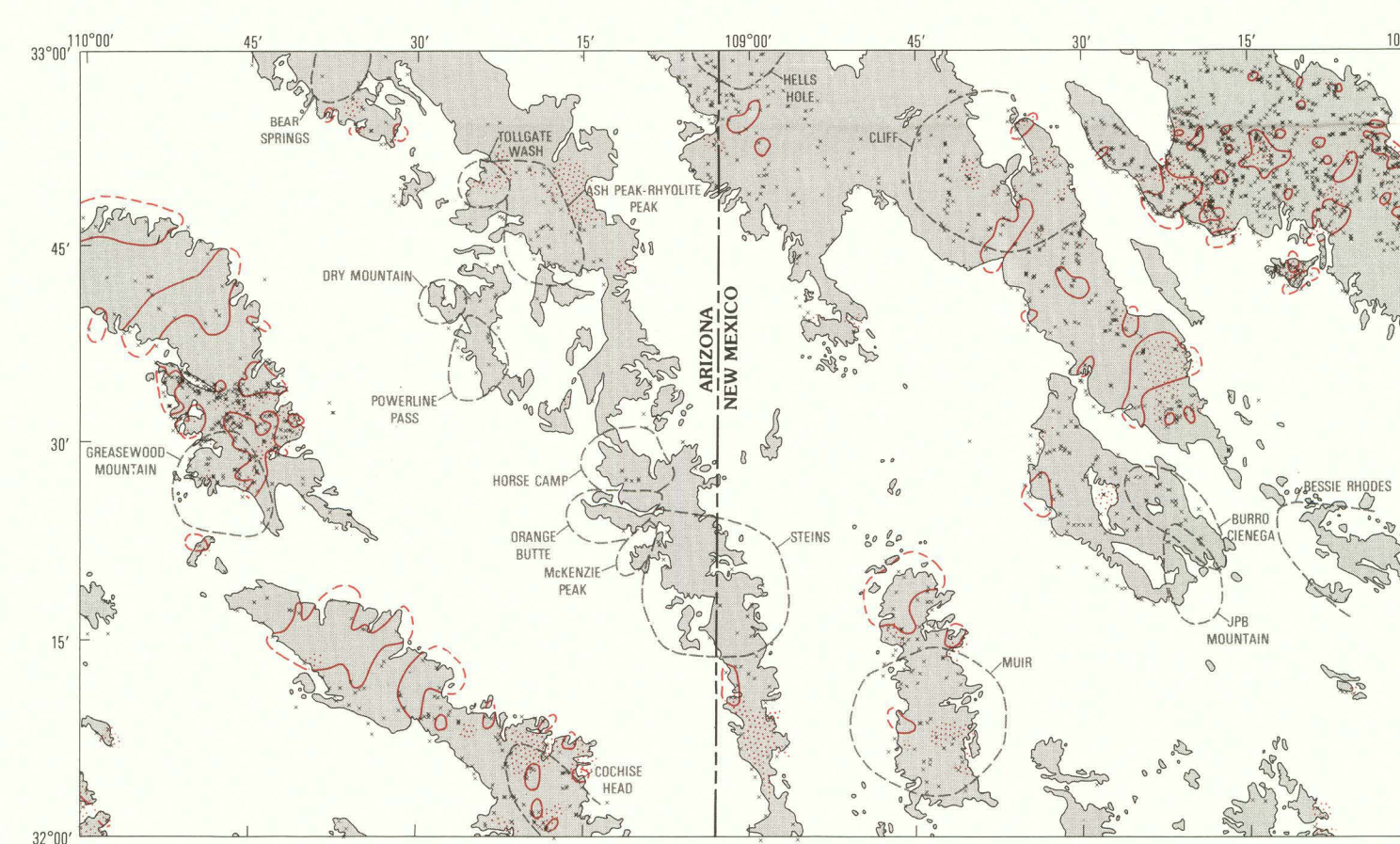


Table 4.—Statistical summary of the analytical results for 1,273 rock samples, Silver City 1° x 2° quadrangle

Table 4 data: Statistical summary of analytical results for 1,273 rock samples. Includes element name, number of observations, range, maximum, minimum, arithmetic mean, standard deviation, and percentile distribution.

Table 8 data (continued): Comparison of selected trace metals in manganese-iron oxide-rich heavy-mineral-concentrates.

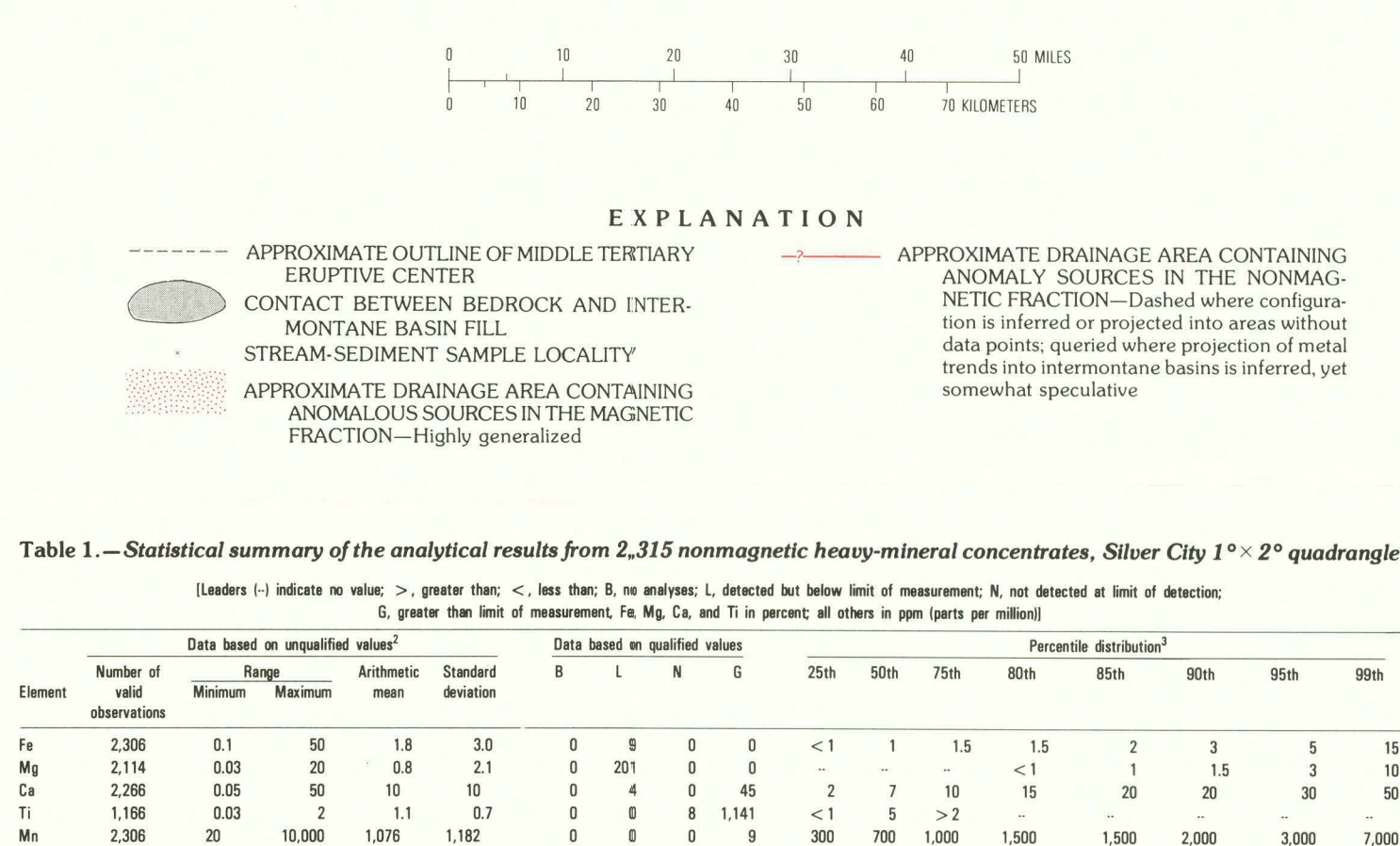
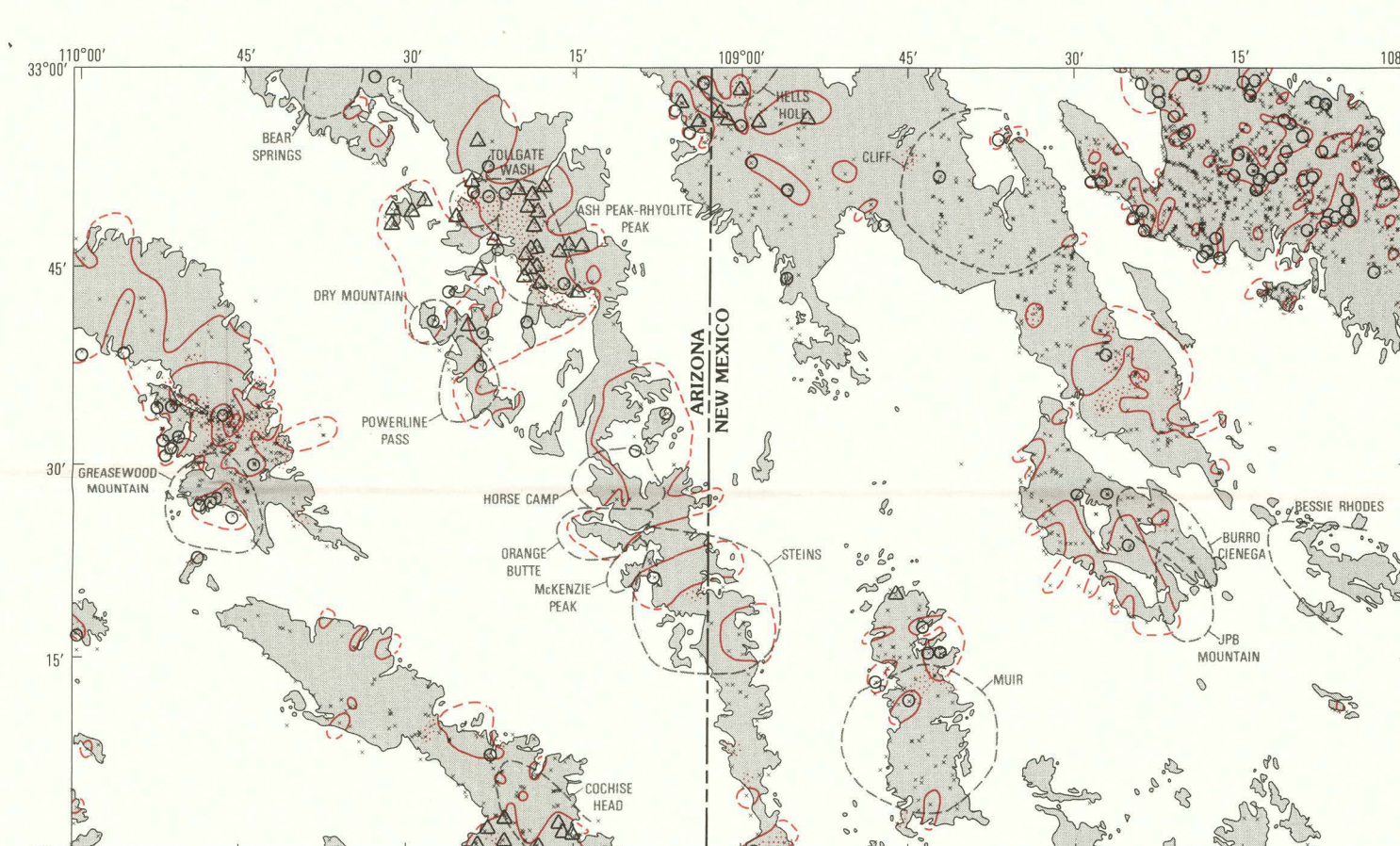
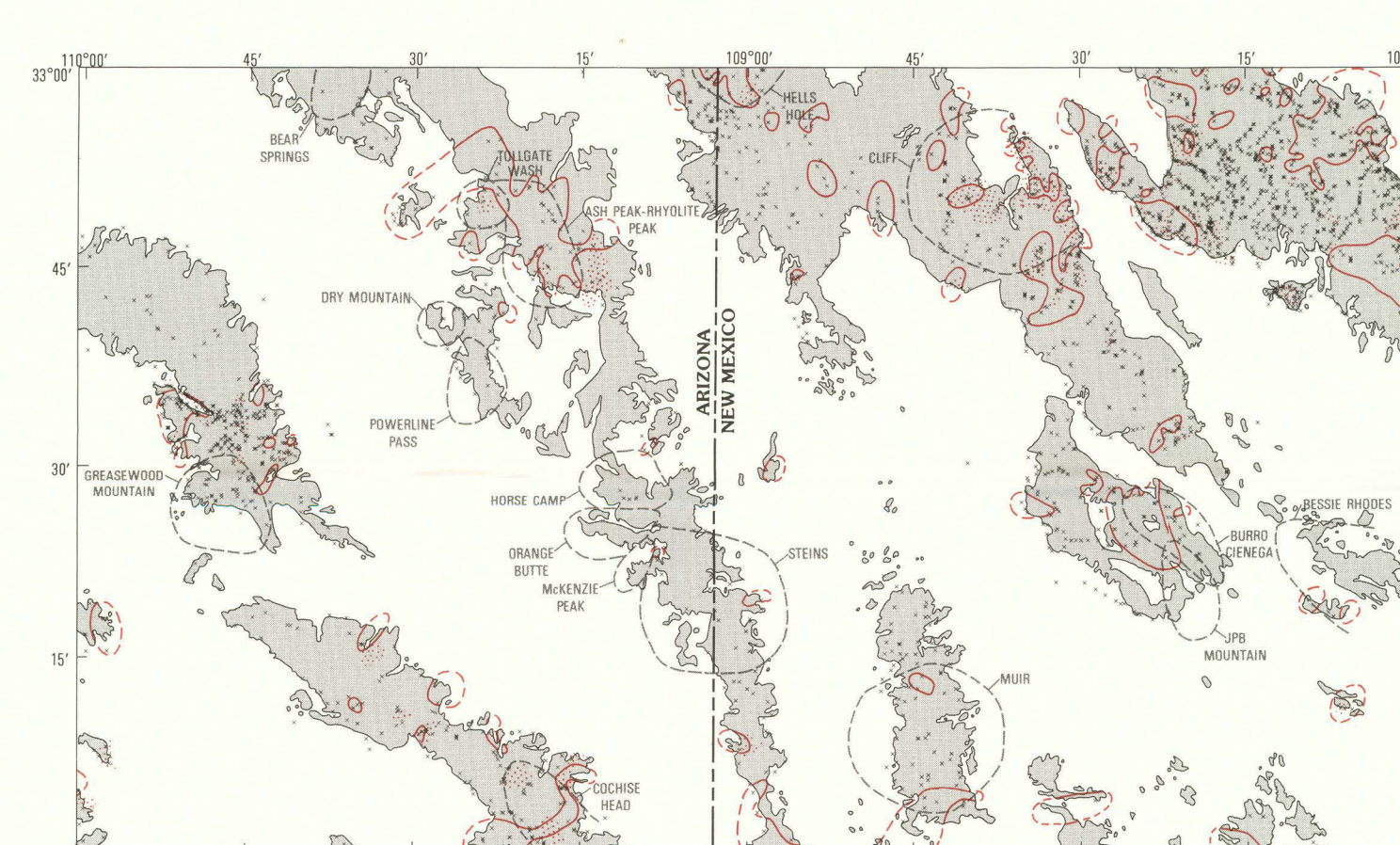


Table 5.—Statistical summary of the analytical results for 328 water samples from wells and springs, Silver City 1° x 2° quadrangle

Table 5 data: Statistical summary of analytical results for 328 water samples from wells and springs. Includes element name, number of observations, range, maximum, minimum, arithmetic mean, standard deviation, and percentile distribution.

Table 8 data (continued): Comparison of selected trace metals in manganese-iron oxide-rich heavy-mineral-concentrates.

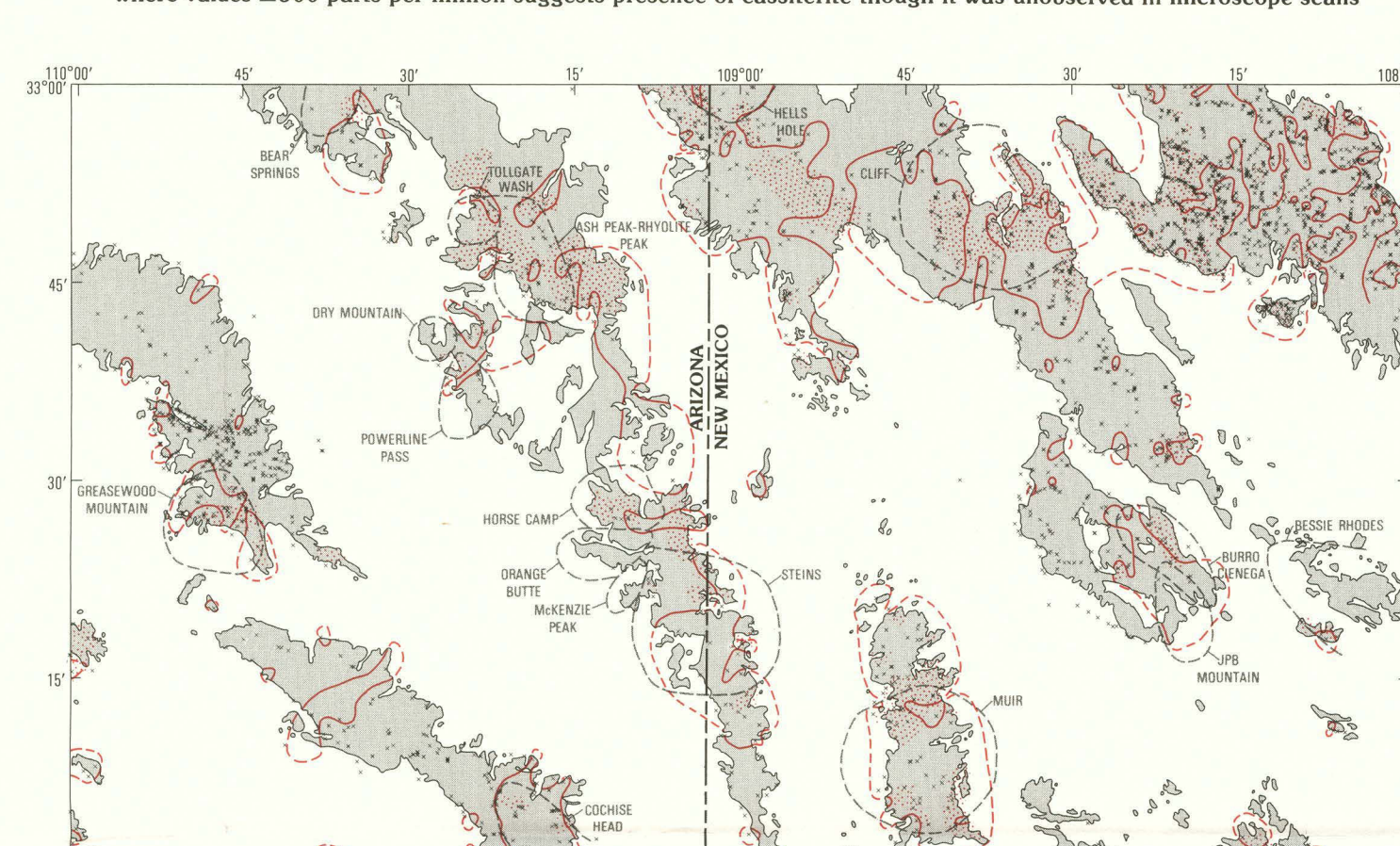
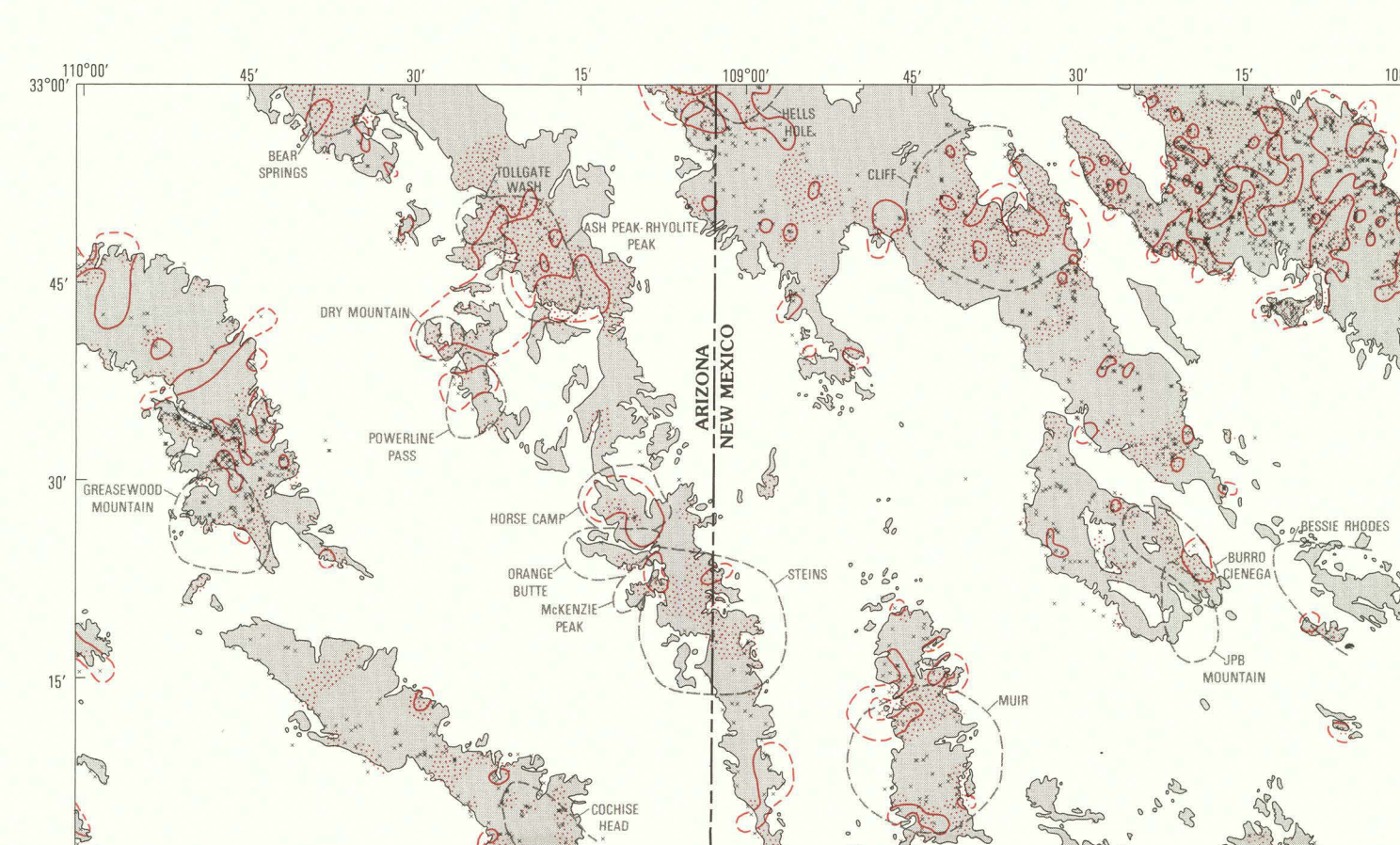


Table 1.—Statistical summary of the analytical results from 2,315 nonmagnetic heavy-mineral concentrates, Silver City 1° x 2° quadrangle. Large table with multiple columns for elements and their statistical data.

Table 6.—Concentrations assigned to qualified analytical data for selected elements in the Silver City 1° x 2° quadrangle

Table 6 data: Concentrations assigned to qualified analytical data for selected elements in the Silver City 1° x 2° quadrangle. Table with columns for element name, number of observations, and assigned value.

Table 8 data (continued): Comparison of selected trace metals in manganese-iron oxide-rich heavy-mineral-concentrates.

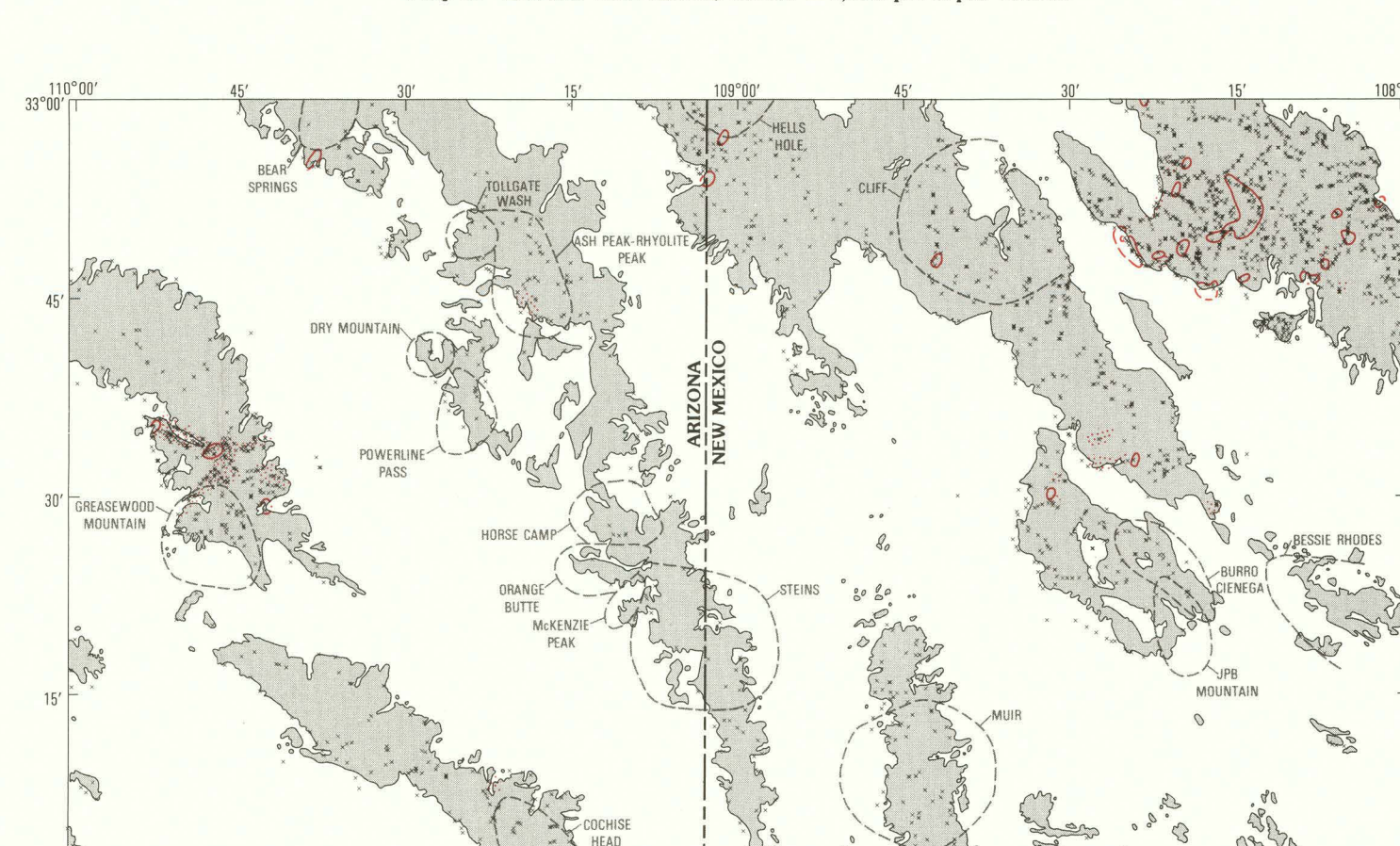
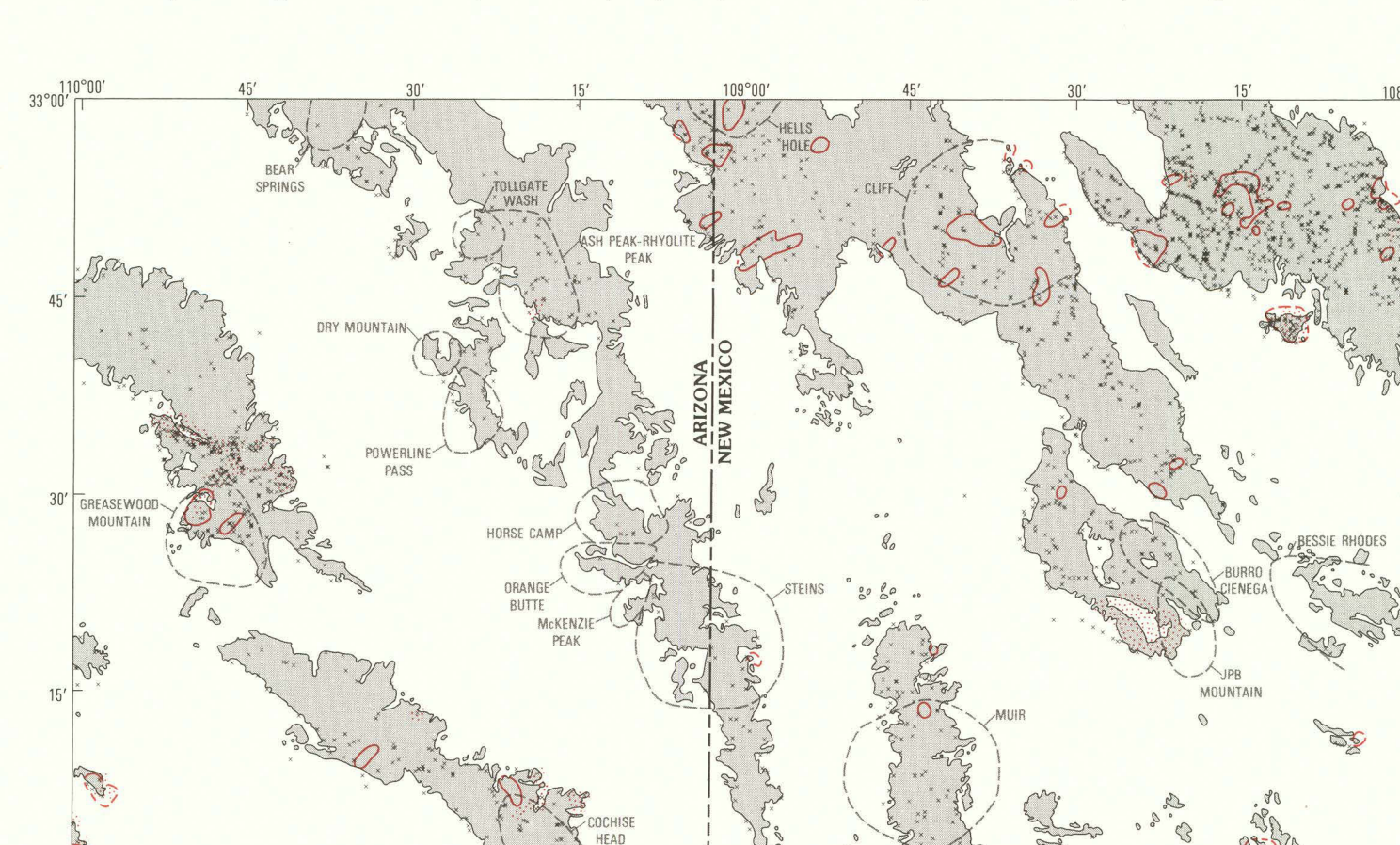


Table 2.—Statistical summary of the analytical results from 2,335 magnetic heavy-mineral concentrates, Silver City 1° x 2° quadrangle. Table with columns for elements and their statistical data.

Table 7.—Concentrations of selected elements in manganese-stained, felsic dike rock, White Signal district, New Mexico

Table 7 data: Concentrations of selected elements in manganese-stained, felsic dike rock, White Signal district, New Mexico. Table with columns for element name and concentration.

Table 8 data (continued): Comparison of selected trace metals in manganese-iron oxide-rich heavy-mineral-concentrates.

### Summary showing the generalized distribution of selected key elements in stream-sediment concentrates GEOCHEMICAL INTERPRETIVE AND SUMMARY MAPS, SILVER CITY 1° x 2° QUADRANGLE, NEW MEXICO AND ARIZONA

By  
Kenneth C. Watts and Jerry R. Hassemer  
1988