

EXPLANATION

1 URBAN OR BUILT-UP LAND

- 11 Residential
- 12 Commercial and services
- 13 Industrial
- 14 Transportation, communications and utilities
- 15 Industrial and commercial complexes
- 16 Mixed urban or built-up land
- 17 Other urban or built-up land

2 AGRICULTURAL LAND

- 21 Cropland and pasture
- 22 Orchards, groves, vineyards, nurseries, and ornamental horticultural areas
- 23 Confined feeding operations
- 24 Other agricultural land

3 RANGELAND

- 31 Herbaceous rangeland
- 32 Shrub and brush rangeland
- 33 Mixed rangeland

4 FOREST LAND

- 41 Deciduous forest land
- 42 Evergreen forest land
- 43 Mixed forest land

5 WATER

- 51 Streams and canals
- 52 Lakes
- 53 Reservoirs
- 54 Bays and estuaries

6 WETLAND

- 61 Forested wetland
- 62 Nonforested wetland

7 BARREN LAND

- 71 Dry salt flats
- 72 Beaches
- 73 Sandy areas other than beaches
- 74 Bare exposed rocks
- 75 Strip mines, quarries, and gravel pits
- 76 Transitional areas
- 77 Mixed barren land

8 TUNDRA

- 81 Shrub and brush tundra
- 82 Herbaceous tundra
- 83 Bare ground tundra
- 84 Wet tundra
- 85 Mixed tundra

9 PERENNIAL SNOW OR ICE

- 91 Perennial snowfields
- 92 Glaciers

For definitions of Level I and Level II categories see U.S. Geological Survey Professional Paper 964, A land use and land cover classification system for use with remote sensor data, 1976, by J. R. Anderson, E. E. Hardy, J. T. Roach, and R. E. Wither.

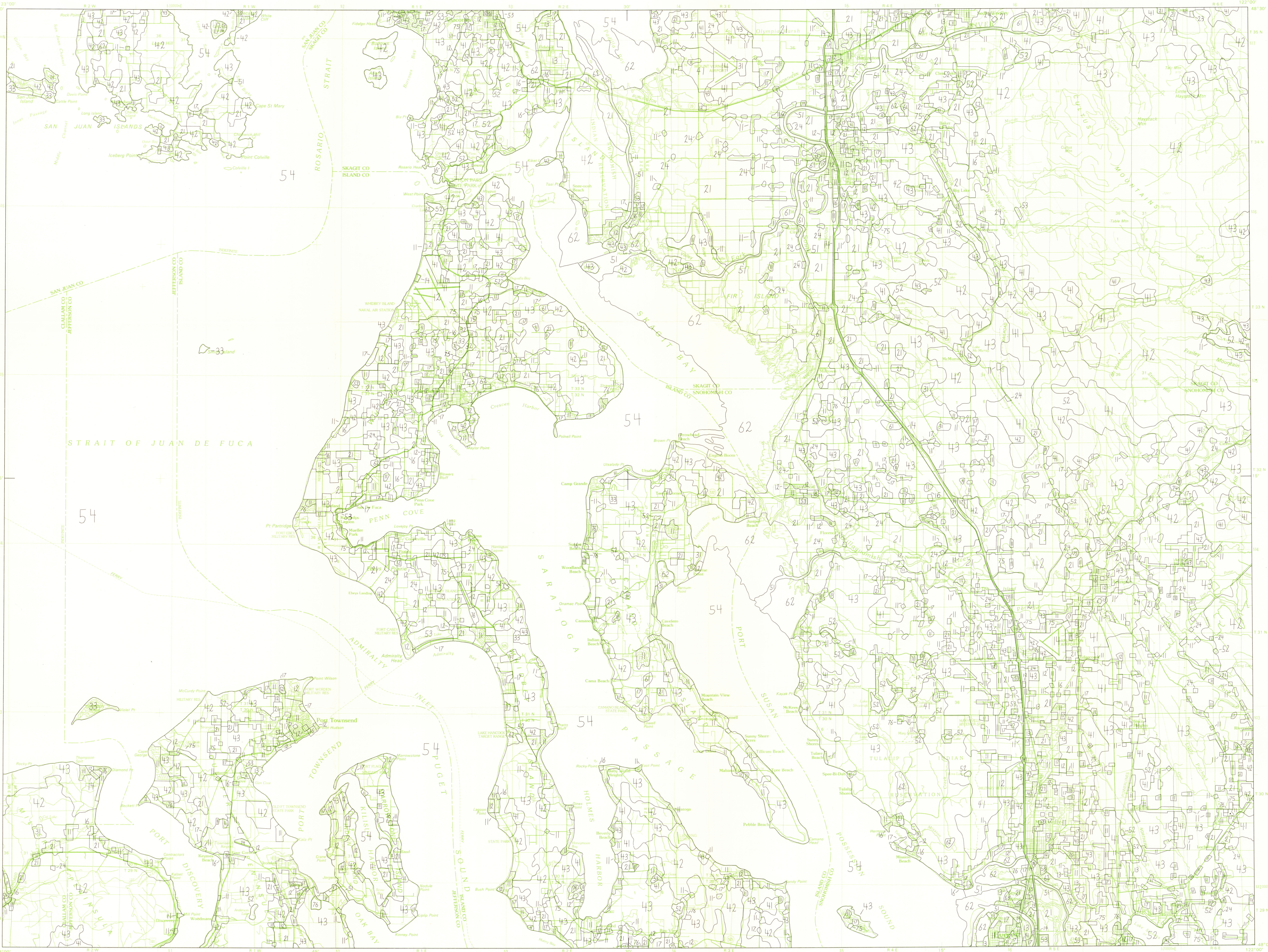
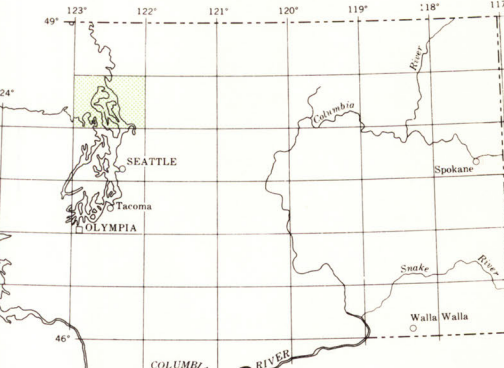
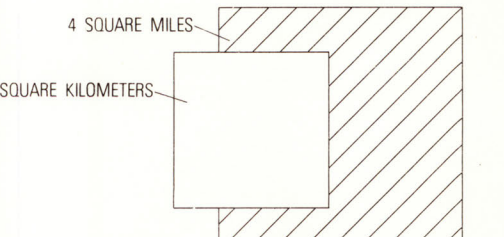
The development of a geographic information system incorporating digital land use data is described in U.S. Geological Survey Professional Paper 1059, GIS/AS: A geographic information retrieval and analysis system for handling land use and land cover data, 1977, by W. B. Mitchell, S. C. Gaglioli, K. E. Anderson, R. G. Feggas, and C. A. Hallam.

Land use and land cover information compiled from source materials dated 1973-75.

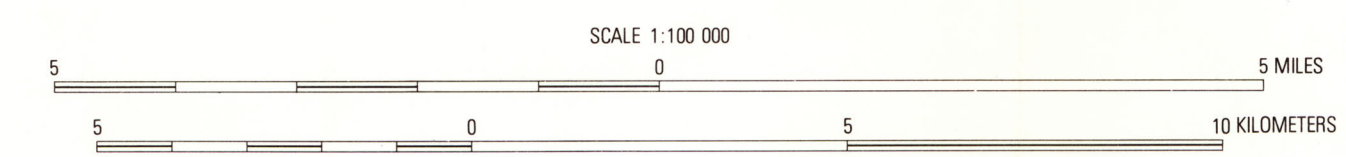
Minimum mapping units are: 4 hectares (10 acres) for Level II categories 11-17, 23-24, 51-54, 75, and urban occurrences of 76; and 16 hectares (40 acres) for all other Level II categories.

For compilation specifications see U.S. Geological Survey Open-File Report 77-555, Specifications for land use and land cover and associated maps, 1977, by G. L. Loelkes, Jr.

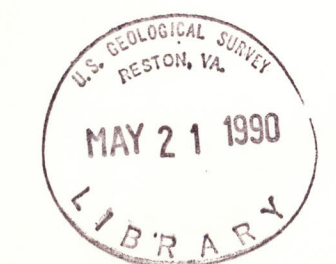
Compilation verified by field check.



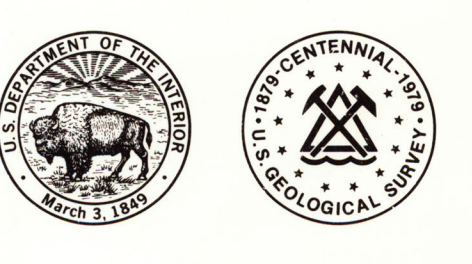
Base from U.S. Geological Survey, 1975, 10,000-meter Universal Transverse Mercator grid, north zone



LAND USE AND LAND COVER, 1973-75
PORT TOWNSEND, WASHINGTON



M(200) 58s
100
p838u
1979
c.2



For sale by Branch of Distribution, U.S. Geological Survey, Box 2486, Federal Center, Denver, CO 80225

