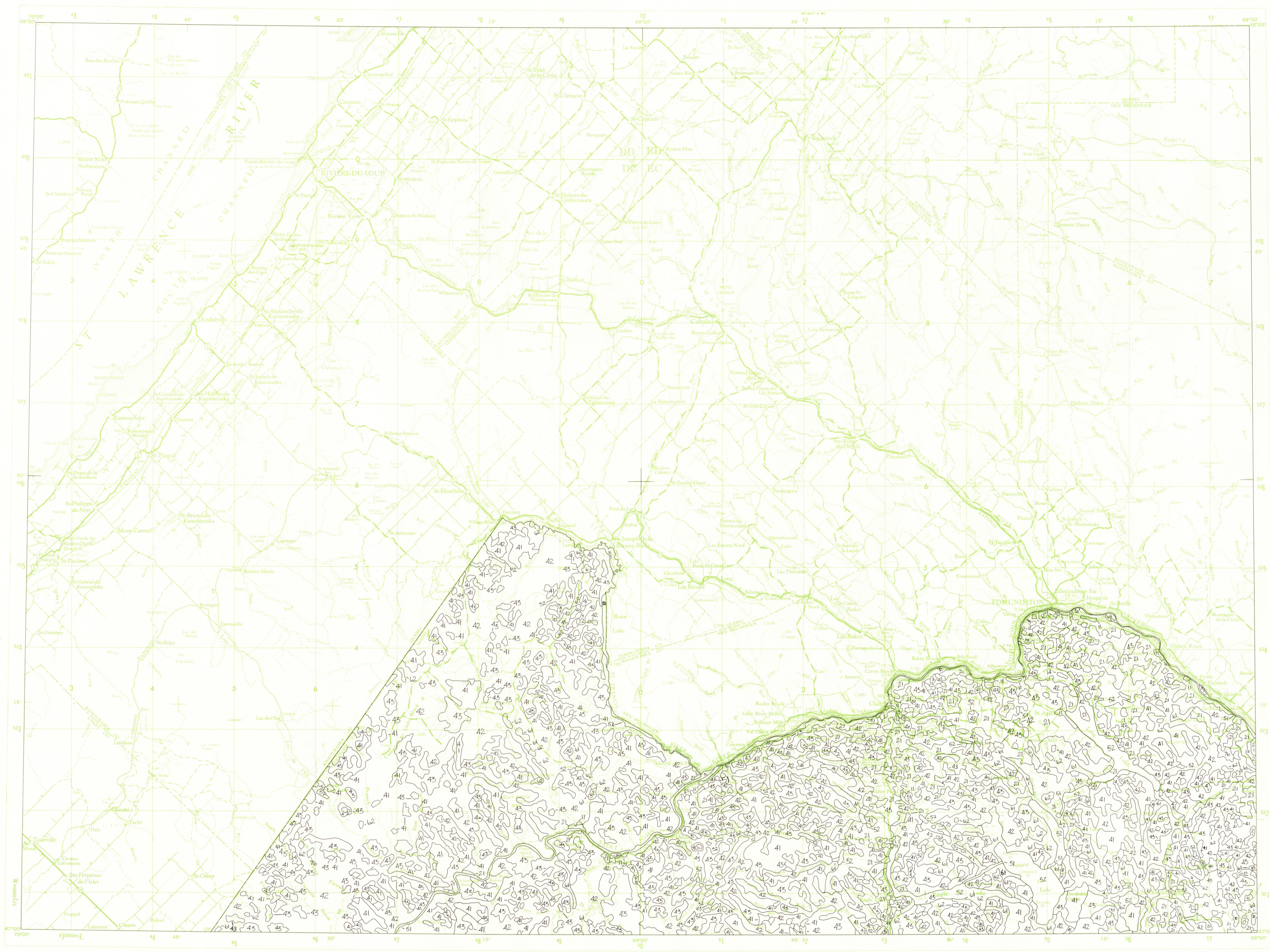


EXPLANATION

- | |
|---|
| 1 URBAN OR BUILT-UP LAND |
| 11 Residential |
| 12 Commercial and services |
| 13 Industrial |
| 14 Transportation, communications and utilities |
| 15 Industrial and commercial complexes |
| 16 Mixed urban or built-up land |
| 17 Other urban or built-up land |
| 2 AGRICULTURAL LAND |
| 21 Cropland and pasture |
| 22 Orchards, groves, vineyards, nurseries, and ornamental horticultural areas |
| 23 Confined feeding operations |
| 24 Other agricultural land |
| 3 RANGELAND |
| 31 Herbaceous rangeland |
| 32 Shrub and brush rangeland |
| 33 Mixed rangeland |
| 4 FOREST LAND |
| 41 Deciduous forest land |
| 42 Evergreen forest land |
| 43 Mixed forest land |
| 5 WATER |
| 51 Streams and canals |
| 52 Lakes |
| 53 Reservoirs |
| 54 Bays and estuaries |
| 6 WETLAND |
| 61 Forested wetland |
| 62 Nonforested wetland |
| 7 BARREN LAND |
| 71 Dry salt flats |
| 72 Beaches |
| 73 Sandy areas other than beaches |
| 74 Bare exposed rocks |
| 75 Strip mines, quarries, and gravel pits |
| 76 Transitional areas |
| 77 Mixed barren land |
| 8 TUNDRA |
| 81 Shrub and brush tundra |
| 82 Herbaceous tundra |
| 83 Bare ground tundra |
| 84 Wet tundra |
| 85 Mixed tundra |
| 9 PERENNIAL SNOW OR ICE |
| 91 Perennial snowfields |
| 92 Glaciers |



For definitions of Level I and Level II categories see U.S. Geological Survey Professional Paper 964, *A land use and land cover classification system for use with remote sensor data*, 1976, by J. R. Anderson, E. E. Hardy, J. T. Roach, and R. E. Wiltner.

The development of a geographic information system incorporating digital land use data is described in U.S. Geological Survey Professional Paper 1059, *GIRAS: A geographic information retrieval and analysis system for handling land use and land cover data*, 1977, by W. B. Mitchell, S. C. Gupitill, K. E. Anderson, R. G. Fegeas, and C. A. Hallam.

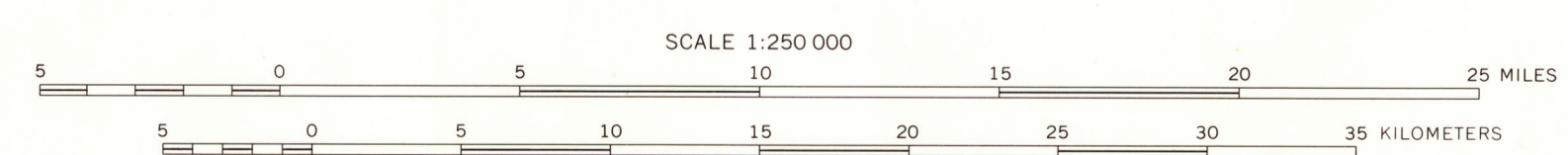
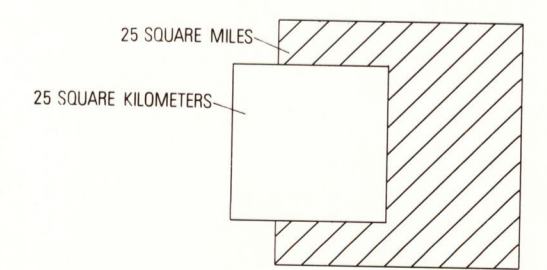
Land use and land cover information compiled from source materials dated 1975.

Minimum mapping units are: 4 hectares (10 acres) for Level II categories 11-17, 23-24, 51-54, 75, and urban occurrences of 76; and 16 hectares (40 acres) for all other Level II categories.

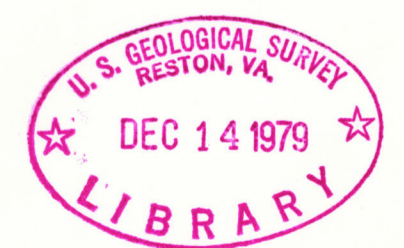
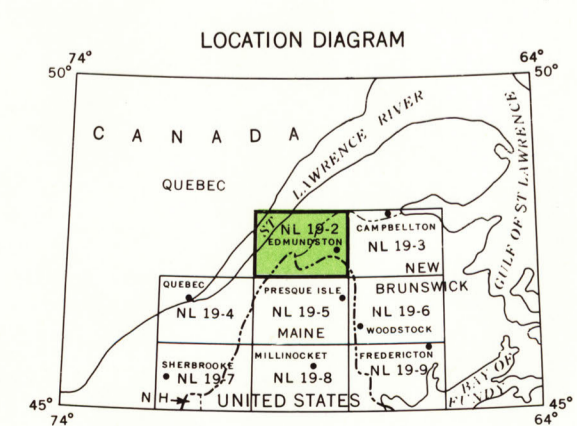
For compilation specifications see U.S. Geological Survey Open-file report 77-555, *Specifications for land use and land cover and associated maps*, 1977, by G. L. Loelkes, Jr.

Base from U.S. Geological Survey, 1962

INTERIOR—GEOLOGICAL SURVEY, RESTON, VA.—1979—179431



LAND USE AND LAND COVER, 1975
EDMUNDSTON, NEW BRUNSWICK, QUEBEC, CANADA; MAINE, UNITED STATES
(UNITED STATES PORTION ONLY)



M(200)585
250
Ed594
1979
copy



For sale by Branch of Distribution, U.S. Geological Survey, 1200 South Eads Street, Arlington, VA 22202

