

EXPLANATION

- 1 URBAN OR BUILT-UP LAND**
- 11 Residential
  - 12 Commercial and services
  - 13 Industrial
  - 14 Transportation, communications and utilities
  - 15 Industrial and commercial complexes
  - 16 Mixed urban or built-up land
  - 17 Other urban or built-up land

- 2 AGRICULTURAL LAND**
- 21 Cropland and pasture
  - 22 Orchards, groves, vineyards, nurseries, and ornamental horticultural areas
  - 23 Confined feeding operations
  - 24 Other agricultural land

- 3 RANGELAND**
- 31 Herbaceous rangeland
  - 32 Shrub and brush rangeland
  - 33 Mixed rangeland

- 4 FOREST LAND**
- 41 Deciduous forest land
  - 42 Evergreen forest land
  - 43 Mixed forest land

- 5 WATER**
- 51 Streams and canals
  - 52 Lakes
  - 53 Reservoirs
  - 54 Bays and estuaries

- 6 WETLAND**
- 61 Forested wetland
  - 62 Nonforested wetland

- 7 BARREN LAND**
- 71 Dry salt flats
  - 72 Beaches
  - 73 Sandy areas other than beaches
  - 74 Bare exposed rocks
  - 75 Strip mines, quarries, and gravel pits
  - 76 Transitional areas
  - 77 Mixed barren land

- 8 TUNDRA**
- 81 Shrub and brush tundra
  - 82 Herbaceous tundra
  - 83 Bare ground tundra
  - 84 Wet tundra
  - 85 Mixed tundra

- 9 PERENNIAL SNOW OR ICE**
- 91 Perennial snowfields
  - 92 Glaciers

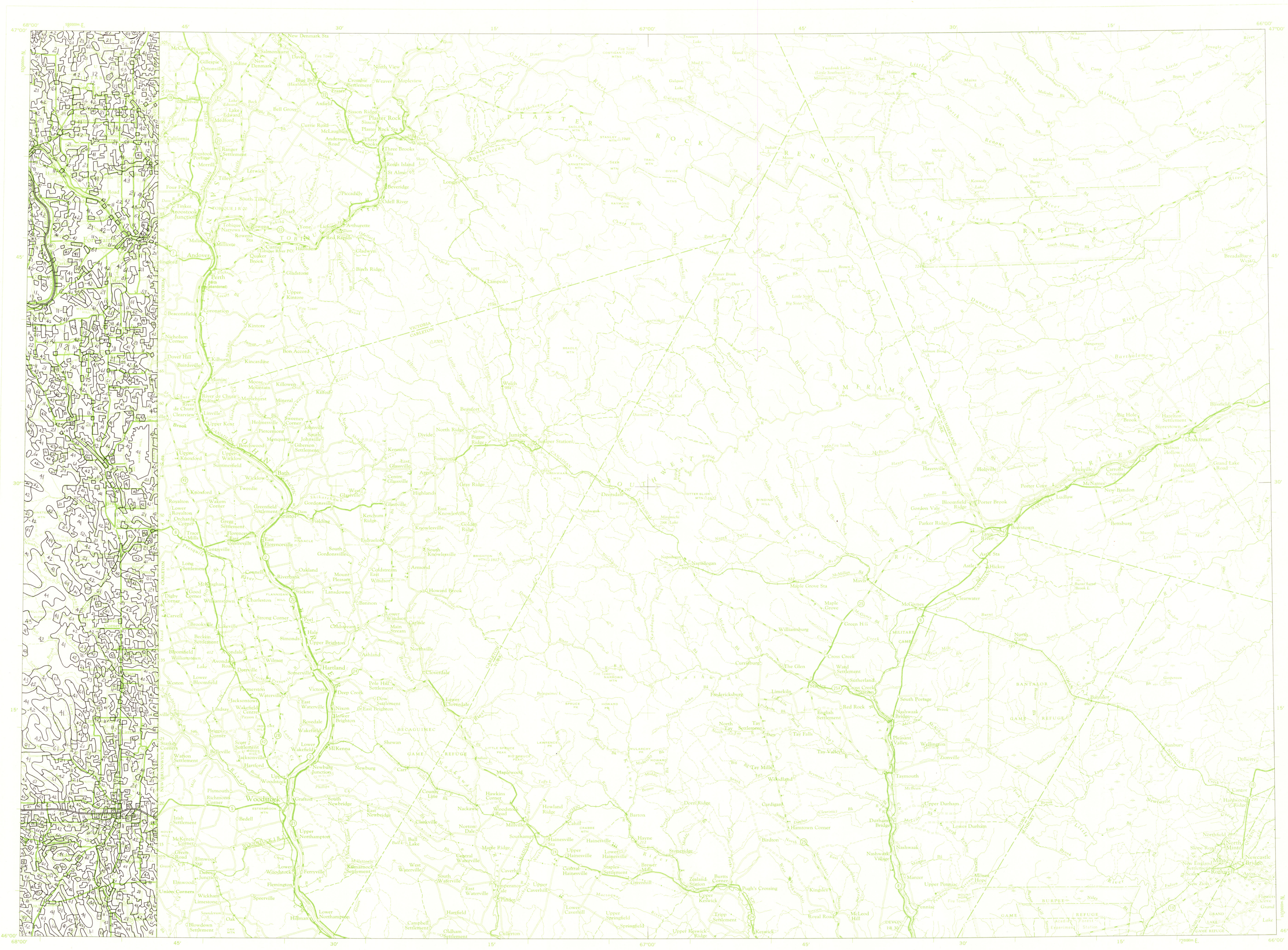
For definitions of Level I and Level II categories see U.S. Geological Survey Professional Paper 964, *A land use and land cover classification system for use with remote sensor data*, 1976, by J. R. Anderson, E. E. Hardy, J. T. Roach, and R. E. Winer.

The development of a geographic information system incorporating digital land use data is described in U.S. Geological Survey Professional Paper 1059, *GIRAS: A geographic information retrieval and analysis system for handling land use and land cover data*, 1977, by W. B. Mitchell, S. C. Gupta, K. E. Anderson, R. G. Feagans, and C. A. Hallam.

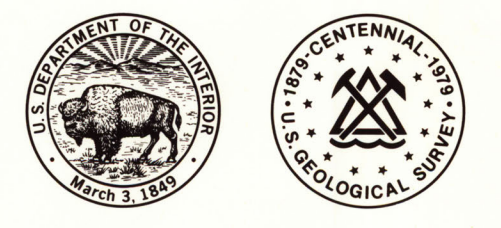
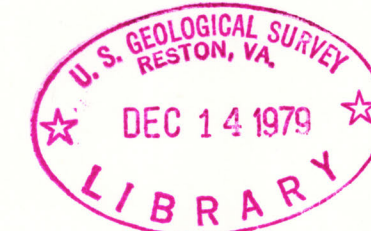
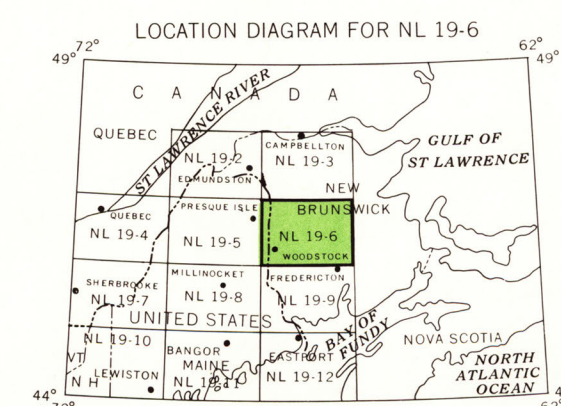
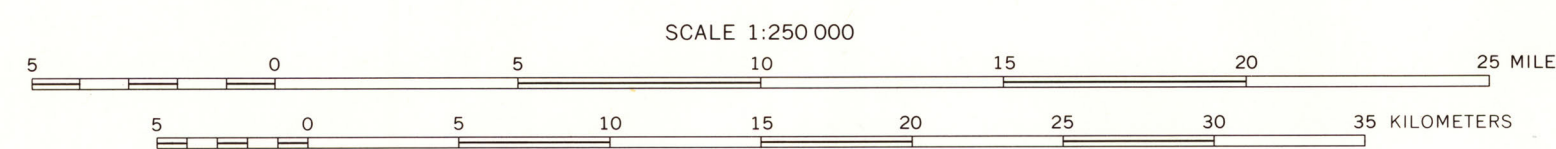
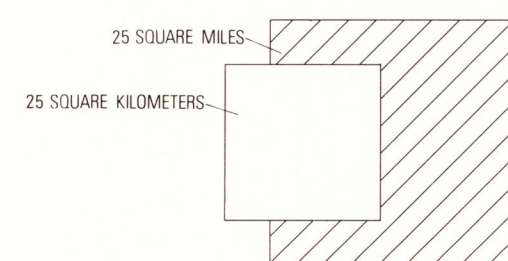
Land use and land cover information compiled from source materials dated 1975.

Minimum mapping units are: 4 hectares (10 acres) for Level II categories 11-17, 23-24, 51-54, 75, and urban occurrences of 76; and 16 hectares (40 acres) for all other Level II categories.

For compilation specifications see U.S. Geological Survey Open-file report 77-555, *Specifications for land use and land cover and associated maps*, 1977, by G. L. Loelkes, Jr.



Base from U.S. Geological Survey, 1959



**LAND USE AND LAND COVER, 1975**  
**WOODSTOCK, NEW BRUNSWICK, CANADA; MAINE, UNITED STATES**  
(UNITED STATES PORTION ONLY)

M(200)585  
250  
W8684  
1979  
copy 1

For sale by Branch of Distribution, U.S. Geological Survey, 1200 South Eads Street, Arlington, VA 22202

