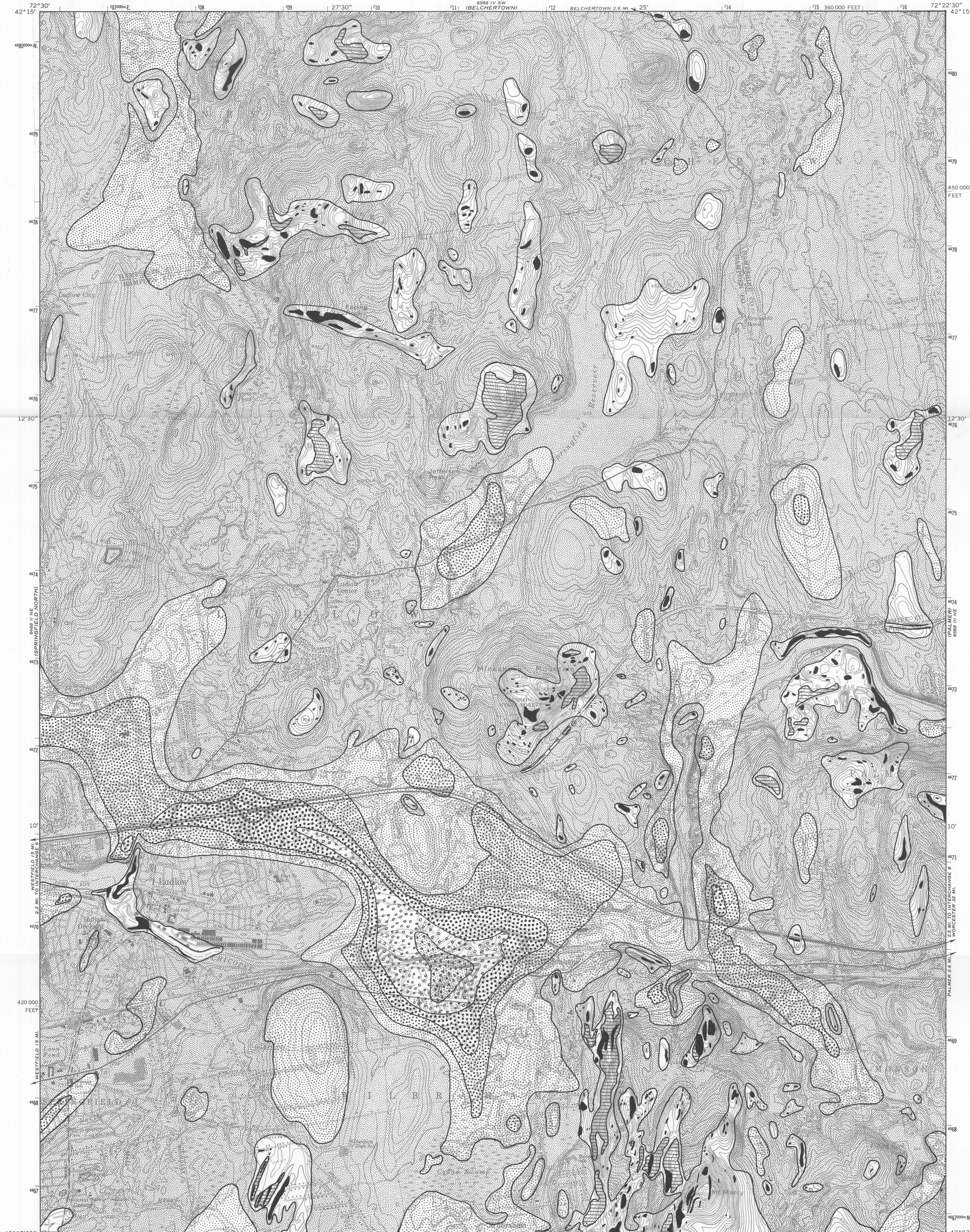


UNITED STATES
DEPARTMENT OF THE INTERIOR
GEOLOGICAL SURVEY



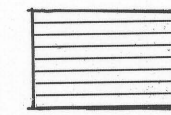
EXPLANATION

Map units indicate ranges in depth to bedrock (ledge) below land surface. Bedrock outcrops were located in the field. Depths to bedrock are inferred from logs of wells and test holes supplemented by data from the contour map of the bedrock surface (Londquist, 1973).

Depths shown are a generalization of localized highly variable conditions and do not include any weathered (decomposed) bedrock. Therefore, this map should not be used as a substitute for detailed site evaluation.

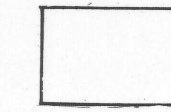


Bedrock outcrop
(Ledge exposed at land surface)

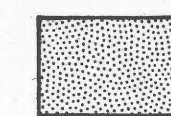


Numerous closely spaced bedrock outcrops separated by small areas of less than 10 feet to bedrock

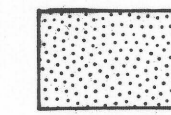
DEPTH TO BEDROCK, In Feet



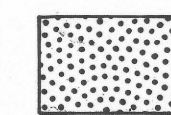
Less than 10



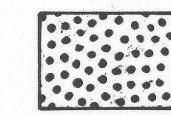
10-50



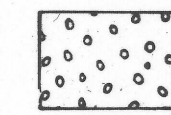
50-100



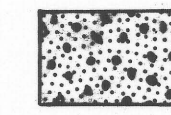
100-150



150-200



200-250



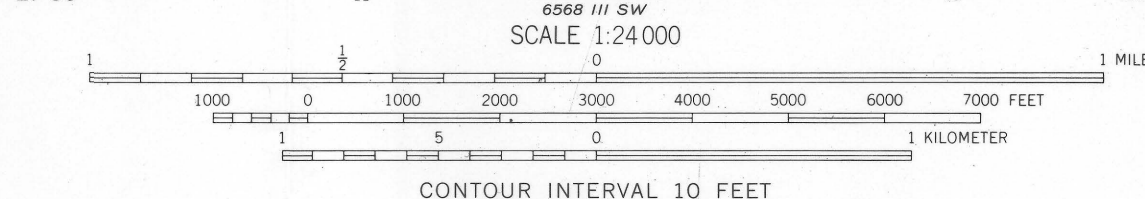
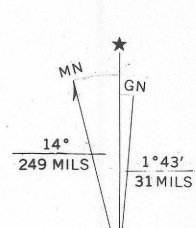
Greater than 250

REFERENCES

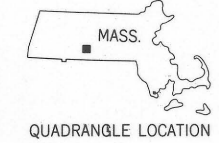
Londquist, C.J., 1973, Contour map of the bedrock surface, Ludlow quadrangle, Massachusetts: U.S. Geol. Survey Misc. Field Studies Map MF-503 A.

Petersen, R.G., and Maevsky, Anthony, 1972, Massachusetts basic-data report no.6, ground-water series, Western Massachusetts area: U.S. Geol. Survey open-file report, 31p.

Base from U.S. Geological Survey, 1989
1:50,000-foot grid based on Massachusetts coordinate system,
mainland zone
100-meter Universal Transverse Mercator grid ticks,
zone 18, shown in black



CONTOUR INTERVAL 10 FEET
DATUM IS MEAN SEA LEVEL



Compiled in part from data gathered in cooperation
with the Massachusetts Water Resources
Commission, Division of Water Resources

**MAP SHOWING DEPTH TO BEDROCK,
LUDLOW QUADRANGLE,
MASSACHUSETTS**

By
Clark J. Londquist and Gerhard W. Leo

1974