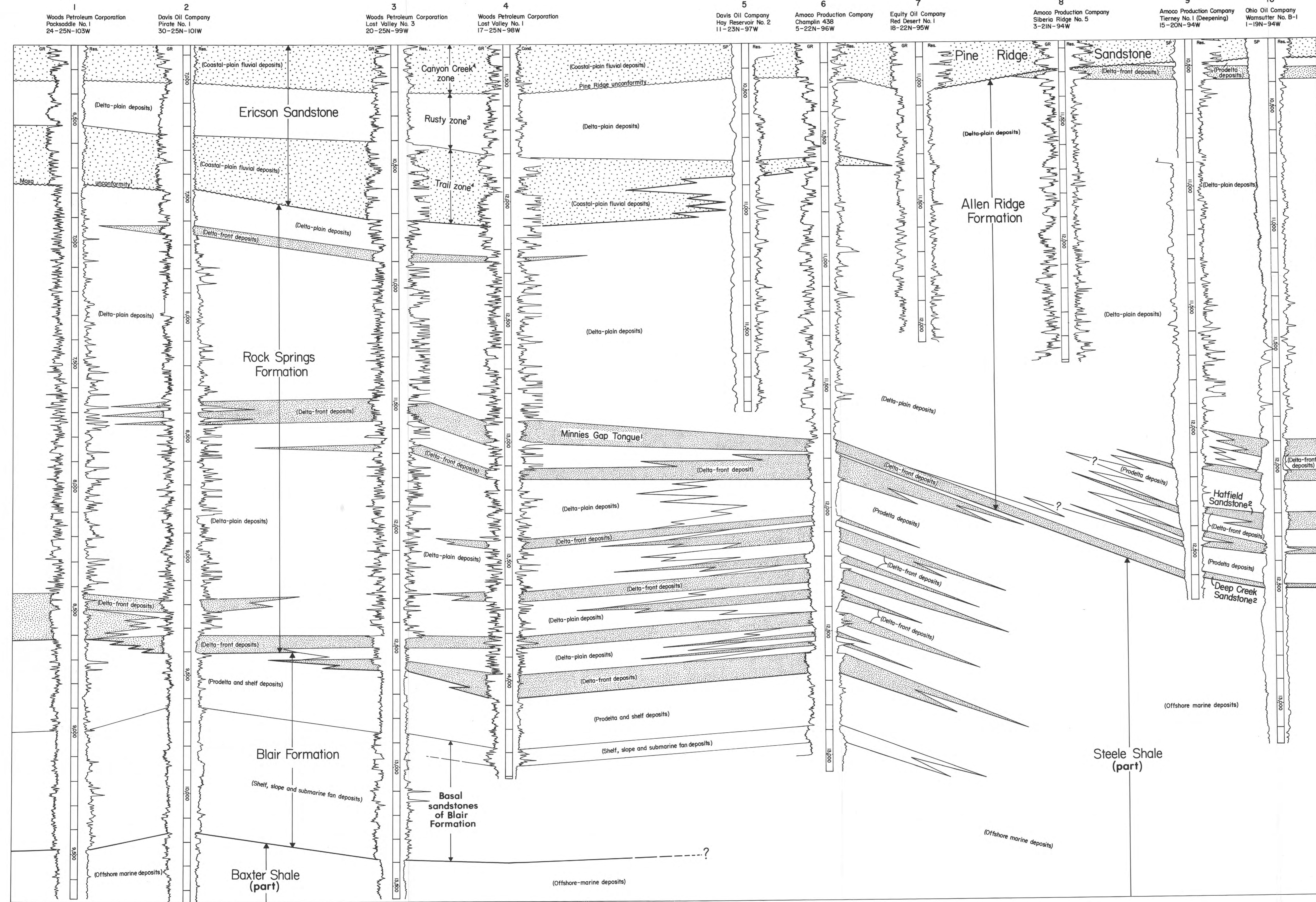


NORTHWEST

SOUTHEAST

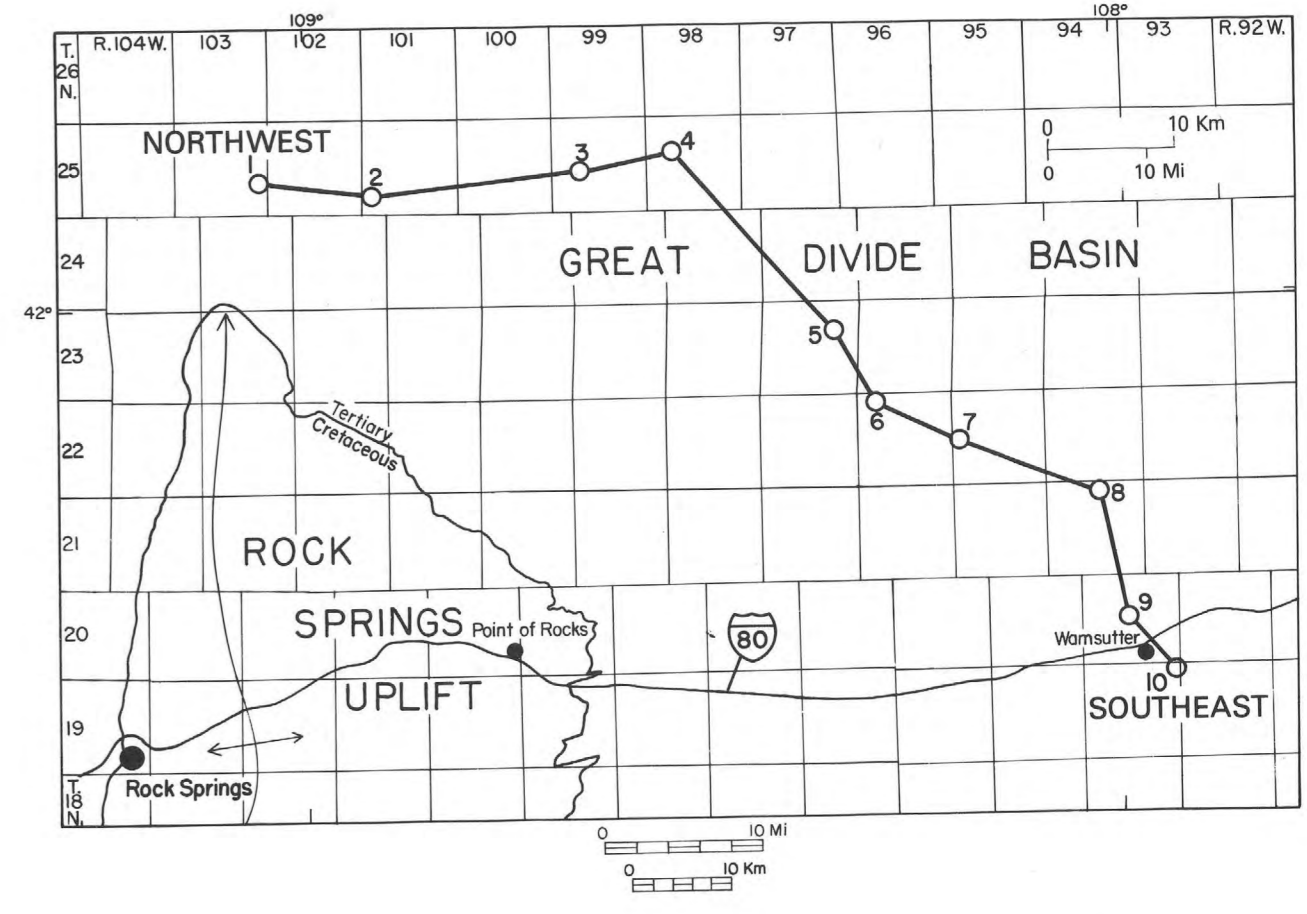
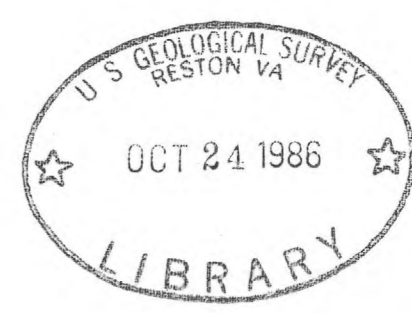


EXPLANATION

UNCONFORMITY
FORMATION CONTACT--Dashed or queried where correlations are unknown
BED OR FACIES CONTACT--Dashed where correlation is unknown
DRILL-HOLE DEPTHS--In feet (1 foot equals 0.3058 meter)

NOTE: Pattern of closely spaced dots is used to show correlations of delta-front deposits; pattern of widely spaced dots is used to show correlation of coastal-plain fluvial (alluvial-plain) deposits. SP, spontaneous potential; GR, gamma ray; Cond., conductivity; Res., resistivity curve. Drill-hole locations are shown as 18-22N-95W for sec. 18, T. 22 N., R. 95 W.

¹Roehler, H. W., 1965, Pre-Laramide restored section, Late Cretaceous rocks, southwest Wyoming and northwest Colorado, in Sedimentation of Late Cretaceous and Tertiary outcrops: Wyoming Geological Association Guidebook, 19th Annual Field Conference, Casper, Wyo., fig. 1, p. 10.
²Hale, L. A., 1961, Late Cretaceous (Montanan) stratigraphy, Eastern Washakie Basin, Carbon County, Wyoming, in Symposium on Late Cretaceous Rocks of Wyoming: Wyoming Geological Association Guidebook, 16th Annual Field Conference, Casper, Wyo., fig. 1, p. 130-131.
³Hale, L. A., 1950, Stratigraphy of the Upper Cretaceous Montana Group in the Rock Springs uplift, Sweetwater County, Wyoming: Wyoming Geological Association Guidebook, 5th Annual Field Conference, Casper, Wyo., p. 49-58.
⁴Roehler, H. W., 1973, Geologic map of the Potter Mountain quadrangle, Sweetwater County, Wyoming: U.S. Geological Survey Geologic Quadrangle Map GQ-1082, scale 1:24,000.



ELECTRIC LOG CORRELATIONS OF UPPER CRETACEOUS ROCKS IN THE MESAVERDE GROUP, BAXTER SHALE AND EQUIVALENT UNITS ACROSS THE GREAT DIVIDE BASIN IN SOUTHWEST WYOMING

By
Henry W. Roehler
1986

INTERIOR—GEOLOGICAL SURVEY, RESTON, VIRGINIA—1986
For sale by Branch of Distribution, U.S. Geological Survey,
Box 25286, Federal Center, Denver, CO 80225

MC38-243
a.1

MF-1828

