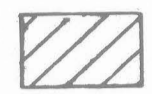


EXPLANATION

Map shows stream systems and drainage areas that contribute streamflow to selected sites on streams.

Drainage areas shown have not been adjusted for the manmade changes in the natural regimens such as storm sewers, diversion dams, canals, and tunnels.

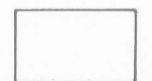
STREAM SYSTEMS



AREA DRAINED BY THE CHICOPEE RIVER SYSTEM
(Tributary to the Connecticut River)



AREA DRAINED BY THE WARE RIVER SYSTEM
(Tributary to the Chicopee River)



AREA DRAINED BY SMALLER STREAM SYSTEMS
TRIBUTARY TO THE CONNECTICUT RIVER



DRAINAGE DIVIDE BETWEEN STREAM SYSTEMS

DRAINAGE-AREA BOUNDARY

TOTAL DRAINAGE AREA- Number indicates area in square miles that contributes streamflow to selected site on a stream (area in square miles x 2.59 = area in square kilometres). Where the selected site is a mouth of tributary stream, generally two numbers and associated drainage-area boundaries are shown. One number is the square miles of drainage area of tributary stream at its mouth, and the other number is the square miles of drainage area of the larger or main stream immediately upstream from the mouth of tributary stream. The square miles of drainage area of the larger or main stream immediately downstream from the mouth of tributary stream is, therefore, the sum of the two numbers shown.

SELECTED SITES

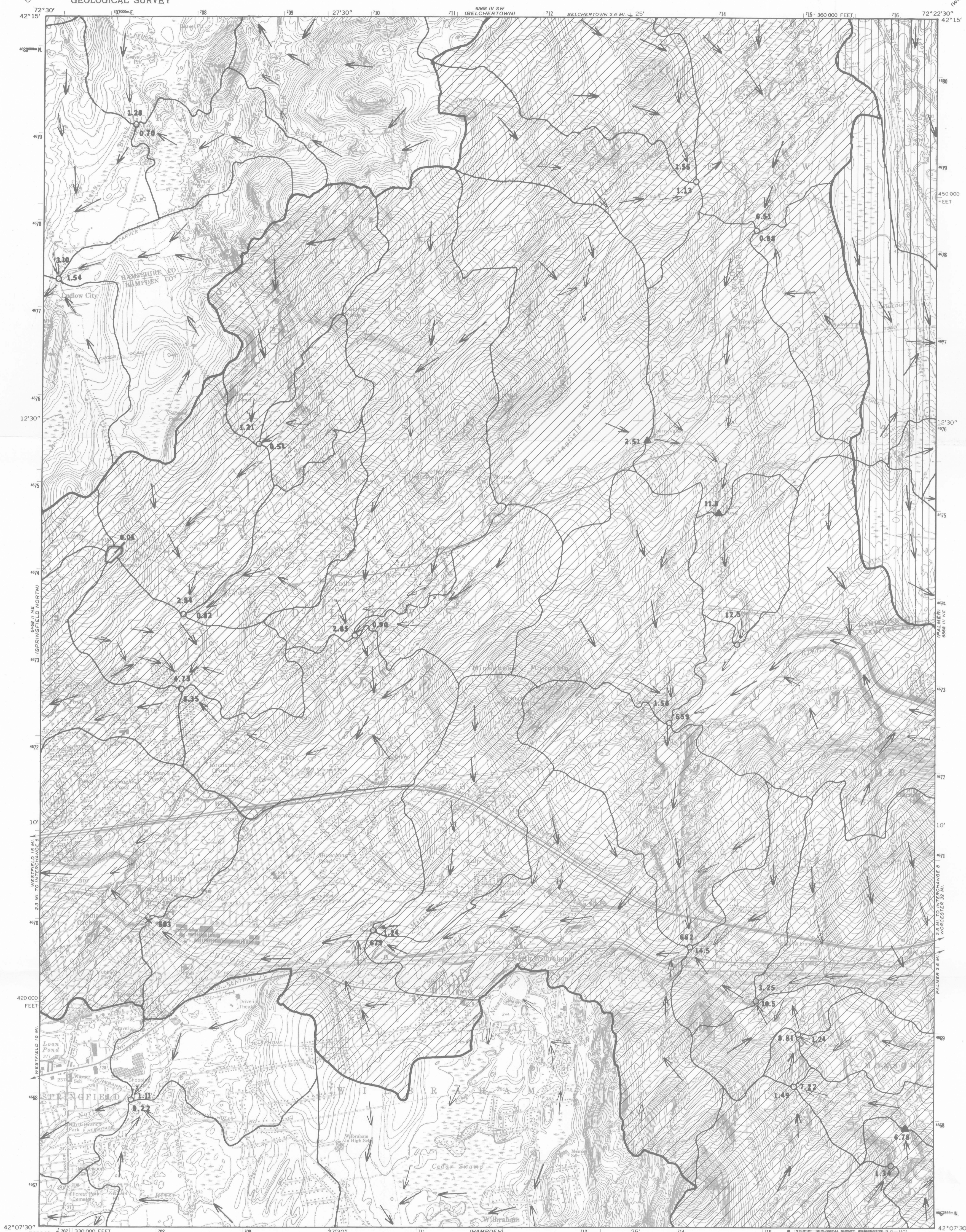
Symbols may be superimposed

▲
OUTLET OF SURFACE-WATER IMPOUNDMENT

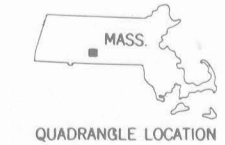
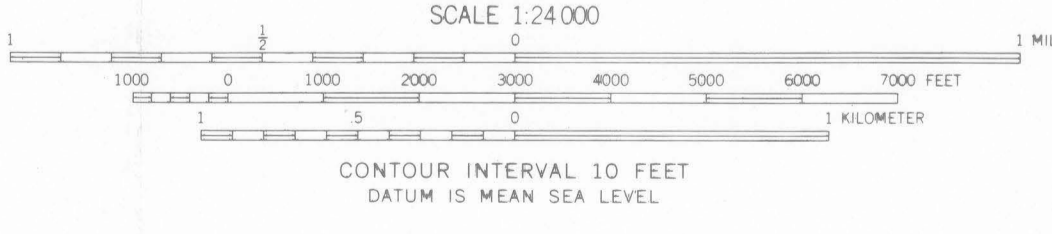
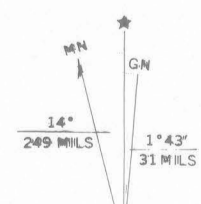
○
MOUTH OF TRIBUTARY STREAM

×
SUPPLEMENTAL SITE

←
GENERALIZED DIRECTION OF STREAMFLOW



From U.S. Geological Survey, 1969
1:250,000 scale grid based on Massachusetts coordinate system
1983 edition
1:250,000 scale Universal Transverse Mercator grid ticks,
zone 18, shown in black



MAP SHOWING DRAINAGE AREAS,
LUDLOW QUADRANGLE,
MASSACHUSETTS

By
Clark J. Londquist
1975