

LAND USE AND LAND COVER CENTRAL ATLANTIC REGIONAL ECOLOGICAL TEST SITE, (CARETS), 1972

40°N

39°

38°

37°

77°

76°

75°

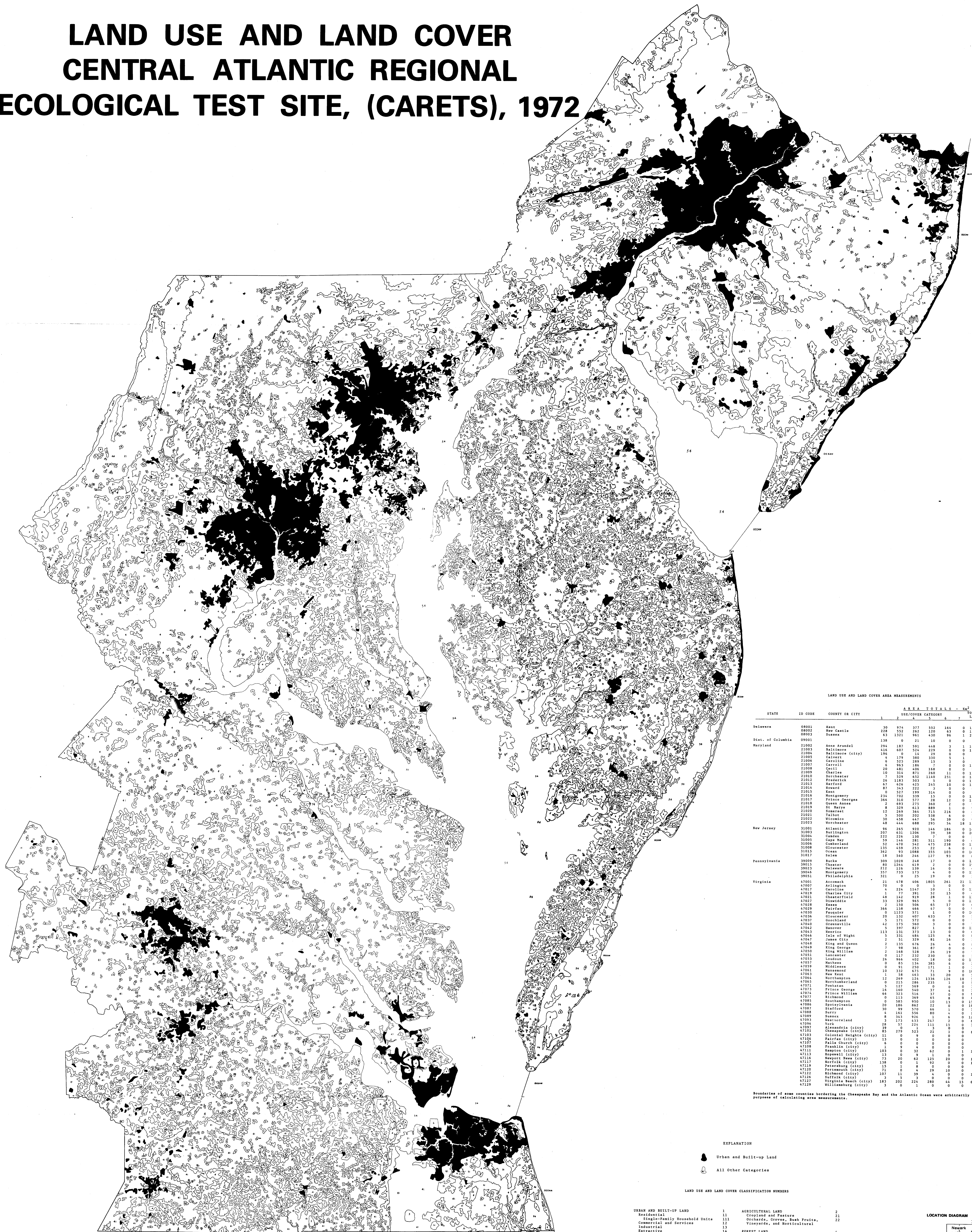
74°

40°

39°

38°

37°N



This set of land use and land cover maps was produced as part of a USGS/NOAA demonstration project to determine potential applications of the North American Wetlands Inventory (NAWI) to the Central Atlantic Regional Ecological Test Site (CARETS). The project was a cooperative effort between the United States Geological Survey and the National Oceanic and Atmospheric Administration (NOAA). The maps were produced from a 1:250,000-scale topographic map series, but the fit between those maps and the land use and land cover data is not perfect. The maps were produced from a 1:250,000-scale topographic map series, but the fit between those maps and the land use and land cover data is not perfect. The maps were produced from a 1:250,000-scale topographic map series, but the fit between those maps and the land use and land cover data is not perfect.

Data shown on these maps also exist in digital form. Each of the original line maps was scanned and digitized by the National Geographic Information System, Environment Canada, Government of Canada, through a cooperative arrangement between the Canadian and United States governments. One of the products of the digitization of the land use and land cover maps is the list of land use and land cover area measurements by county and independent city, displayed on this map sheet. A word of caution is in order for the use of these maps. The CARETS project was an investigation. It was not designed to produce definitive land use maps as final products. Rather, it was designed to determine the feasibility of applying various land use data to the solution of regional environmental problems. In this test of land use data, the mapping accuracy varied from one land use category to the next. The greatest inaccuracies occur in the urban and built-up category. However, overall these maps are accurate to approximately 70 percent. Land use data are field checks of selected point samples. Since this method of accuracy analysis included no errors (1) the design, placement of boundaries and (2) inaccuracies resulting from land use data are small to show at the scale of map compilation, the level of accuracy attained is believed to be adequate to portray regional-scale land use and land cover patterns.

These maps were prepared jointly by the National Oceanic and Atmospheric Administration (NOAA) and the U.S. Geological Survey under Inter-agency Memorandum of Understanding No. 5-72-24-46, Earth Resource Technology Satellite Investigation (ERTS-1). Comments and criticisms of the maps, as well as questions concerning other aspects of the CARETS project and the various volumes of the final report, should be directed to the CARETS Project Principal Investigator, Robert H. Alexander, U.S.G.S. National Center, Mail Stop 710, Reston, Virginia 22092.

The authors thank Eldon Jensen for his supervision of the final drafting and editing of the eight original 1:250,000-scale land use and land cover maps and Robert Dolan for his advice and assistance in the design, content, format, and selection of scale for these 1:250,000-scale maps.

LAND USE AND LAND COVER AREA MEASUREMENTS									
STATE	ID CODE	COUNTY OR CITY	AREA TOTALS - Sq. Miles						
			USDEPARTMENT CATEGORY						
			1	2	3	4	5	6	7
Delaware									
08001	08001	Kent	30	974	377	552	164	0	1546
08002	08002	New Castle	228	532	282	120	63	0	1105
08003	08003	Sussex	63	1371	961	430	96	1	2442
Dist. of Columbia									
09001	09001		138	0	12	0	0	0	150
Maryland									
21002	21002	Anne Arundel	294	187	591	448	3	1	1076
21003	21003	Baltimore	444	407	544	229	0	0	1547
21004	21004	Baltimore (city)	196	0	14	29	0	0	239
21005	21005	Calvert	6	119	360	130	5	1	549
21006	21006	Caroline	6	525	289	15	3	0	823
21007	21007	Cecil	10	314	871	240	11	0	1206
21008	21008	Charles	20	481	406	168	0	0	907
21009	21009	Frederick	10	1183	503	5	0	0	1712
21010	21010	Garrett	67	326	423	245	10	0	1439
21011	21011	Howard	87	543	722	3	0	0	1318
21012	21012	Montgomery	9	327	189	31	0	0	532
21013	21013	Prince George's	234	702	339	15	0	0	1273
21014	21014	Queen Anne's	2	493	275	360	2	0	972
21015	21015	St. Mary's	80	1244	619	2	0	0	1943
21016	21016	Talbot	12	269	364	715	214	0	861
21017	21017	Wicomico	3	400	202	538	4	0	713
21018	21018	Worcester	10	458	447	34	39	0	974
21019	21019	Worcester	48	444	688	295	54	18	1232
New Jersey									
31001	31001	Atlantic	86	245	920	146	184	0	1467
31002	31002	Burlington	207	431	1206	39	38	0	2082
31003	31003	Camden	222	226	130	7	0	0	578
31004	31004	Essex	59	146	281	511	190	0	674
31005	31005	Gloucester	52	470	542	475	238	0	1302
31006	31006	Hudson	135	159	753	22	6	0	893
31007	31007	Monmouth	362	53	1068	355	101	0	1846
31008	31008	Ocean	18	340	246	127	93	0	897
31009	31009	Union	309	1028	248	17	0	0	1585
31010	31010	Warren	80	1244	619	2	0	0	1943
31011	31011	Delaware	217	126	139	34	0	0	477
31012	31012	Montgomery	327	733	113	6	0	0	1169
31013	31013	Philadelphia	321	0	15	19	0	0	346
Pennsylvania									
41001	41001	Allegheny	22	478	486	1803	261	21	1187
41002	41002	Armstrong	70	0	0	0	0	0	70
41003	41003	Beaver	4	234	1347	30	0	0	1316
41004	41004	Butte	1	177	391	52	13	0	480
41005	41005	Chatham	48	142	919	78	1	0	1112
41006	41006	Columbia	2	150	366	65	17	0	533
41007	41007	Dauphin	39	339	866	17	0	0	1237
41008	41008	Franklin	3	1123	511	1	0	0	1549
41009	41009	Harrisburg	5	171	572	0	0	0	748
41010	41010	Hershey	10	132	560	3	0	0	666
41011	41011	Lebanon	153	397	827	1	0	0	1229
41012	41012	Lancaster	13	131	373	23	0	0	517
41013	41013	Lebanon	5	331	484	125	4	0	826
41014	41014	York	2	51	359	81	16	0	477
41015	41015	York	7	155	676	26	4	0	817
41016	41016	York	7	180	661	17	0	0	846
41017	41017	York	2	148	528	26	19	0	717
41018	41018	York	0	117	32	210	0	0	349
41019	41019	York	0	986	402	18	0	0	1394
41020	41020	York	0	986	402	18	0	0	1394
41021	41021	York	10	332	615	71	9	0	1026
41022	41022	York	12	269	124	1316	124	18	549
41023	41023	York	0	113	369	37	0	0	490
41024	41024	York	5	127	569	0	0	0	701
41025	41025	York	16	440	340	27	0	0	613
41026	41026	York	66	323	514	37	0	0	905
41027	41027	York	0	113	369	37	0	0	490
41028	41028	York	20	185	862	10	13	0	1048
41029	41029	York	4	141	556	80	1	0	725
41030	41030	York	8	141	556	80	1	0	725
41031	41031	York	3	175	433	247	3	0	611
41032	41032	York	18	143	216	11	0	0	276
41033	41033	York	39	0	511	3	0	0	440
41034	41034	York	82	279	521	3	0	0	848
41035	41035	York	11	0	0	0	0	0	20
41036	41036	York	0	13	0	0	0	0	13
41037	41037	York	0	0	0	0	0	0	0
41038	41038	York	0	0	0	0	0	0	0
41039	41039	York	0	0	0	0	0	0	0
41040	41040	York	0	0	0	0	0	0	0
41041	41041	York	0	0	0	0	0	0	0
41042	41042	York	0	0	0	0	0	0	0
41043	41043	York	0	0	0	0	0	0	0
41044	41044	York	0	0	0	0	0	0	0
41045	41045	York	0	0	0	0	0	0	0
41046	41046	York	0	0	0	0	0	0	0
41047	41047	York	0	0	0	0	0	0	0
41048	41048	York	0	0	0	0	0	0	0
41049	41049	York	0	0	0	0	0	0	0
41050	41050	York	0	0	0	0	0	0	0
41051	41051	York	0	0	0	0	0	0	0
41052	41052	York	0	0	0	0	0	0	0
41053	41053	York	0	0	0	0	0	0	0
41054	41054	York	0	0	0	0	0	0	0
41055	41055	York	0	0	0	0	0	0	0
41056	41056	York	0	0	0	0	0	0	0
41057	41057	York	0	0	0	0	0	0	0
41058	41058	York	0	0	0	0	0	0	0
41059	41059	York	0	0	0	0	0	0	0
41060	41060	York	0	0	0	0	0	0	0
41061	41061	York	0	0	0	0	0	0	0
41062	41062	York	0	0	0	0	0	0	0
41063	41063	York	0	0	0	0	0	0	0
41064	41064	York	0	0	0	0	0	0	0
41065	41065	York	0	0	0	0	0	0	0
41066	41066	York	0	0	0	0	0	0	0
41067	41067	York	0	0	0	0	0	0	0
41068	41068	York	0	0	0	0	0	0	0
41069	41069	York	0	0	0	0	0	0	0
41070	41070	York	0	0	0	0	0	0	0
41071	41071	York	0	0	0	0	0	0	0
41072	41072	York	0	0	0	0	0	0	0
41073	41073	York	0	0	0	0	0	0	0
41074	41074	York	0	0	0	0	0	0	0
41075	41075	York	0	0	0	0	0	0	0
41076	41076	York	0	0	0	0	0	0	0
41077	41077	York	0	0	0	0	0	0	0
41078	41078	York	0	0	0	0	0	0	0
41079	41079	York	0	0	0	0	0	0	0
41080	41080	York	0	0	0	0	0	0	0
41081	41081	York	0	0	0	0	0	0	0
41082	41082	York	0	0	0	0	0	0	0
41083	41083	York	0	0	0	0	0	0	0
41084	41084	York	0	0	0	0	0	0	0
41085	41085	York	0	0	0	0	0	0	0
41086	41086	York	0	0	0	0	0	0	0
41087	41087	York	0	0	0	0	0	0	0
41088	41088	York	0	0	0	0	0	0	0
41089	41089	York	0	0	0	0	0	0	0
41090	41090	York	0	0	0	0	0	0	0
41091	41091	York	0	0	0	0	0	0	0
41092	41092	York	0	0	0	0	0	0	0
41093	41093	York	0	0	0	0	0	0	0
41094	41094	York	0	0	0	0	0	0	0
41095	41095	York	0	0	0	0	0	0	0
41096	41096	York	0	0	0	0	0	0	0
41097	41097	York	0	0	0	0	0	0	0
41098	41098	York	0	0	0	0	0	0	0
41099	41099	York	0	0	0	0	0	0	0
41100	41100	York	0	0	0	0	0	0	0
New York									
36001	36001	Albany	52	100	100	100	100	100	100
36002	36002	Albany (city)	1	1	1	1	1	1	1
36003	36003	Albany (city)	1	1	1	1	1	1	1
36004	36004	Albany (city)	1	1	1	1	1	1	1
36005	36005	Albany (city)	1	1	1	1	1	1	1
36006	36006	Albany (city)	1	1	1	1	1	1	1
36007	36007	Albany (city)	1	1	1	1	1	1	1
36008	36008	Albany (city)	1	1	1	1	1	1	1
36009	36009	Albany (city)	1	1	1	1	1	1	1
36010	36010	Albany (city)	1	1	1	1	1	1	1
36011	36011	Albany (city)	1	1	1	1	1	1	1
36012	36012	Albany (city)	1	1	1	1	1	1	1
36013	36013	Albany (city)	1	1	1	1	1	1	1
36014	36014	Albany (city)	1	1	1	1	1	1	1
36015	36015	Albany (city)	1	1	1	1	1	1	1
36016	36016	Albany (city)	1	1	1	1	1	1	1
36017	36017	Albany (city)	1	1	1	1	1	1	1
36018	36018	Albany (city)	1	1	1	1	1	1	1
36019	36019	Albany (city)	1	1	1	1	1	1	1
36020	36020	Albany (city)	1	1	1	1	1	1	1
36021	36021	Albany (city)	1	1	1	1	1	1	1
36022	36022	Albany (city)	1	1	1	1	1	1	1
36023	36023	Albany (city)	1	1	1	1	1	1	1
36024	3602								