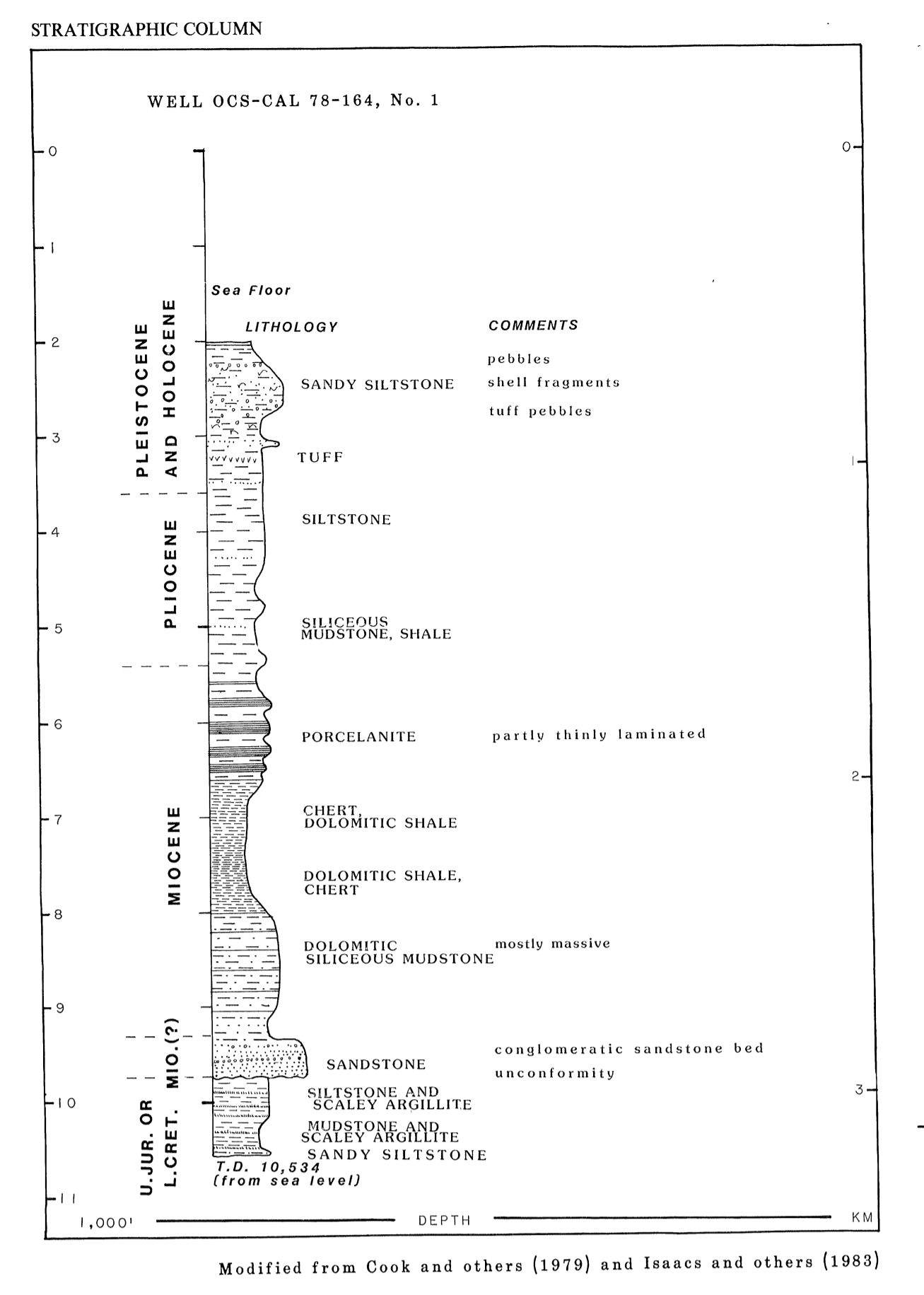


EXPLANATION

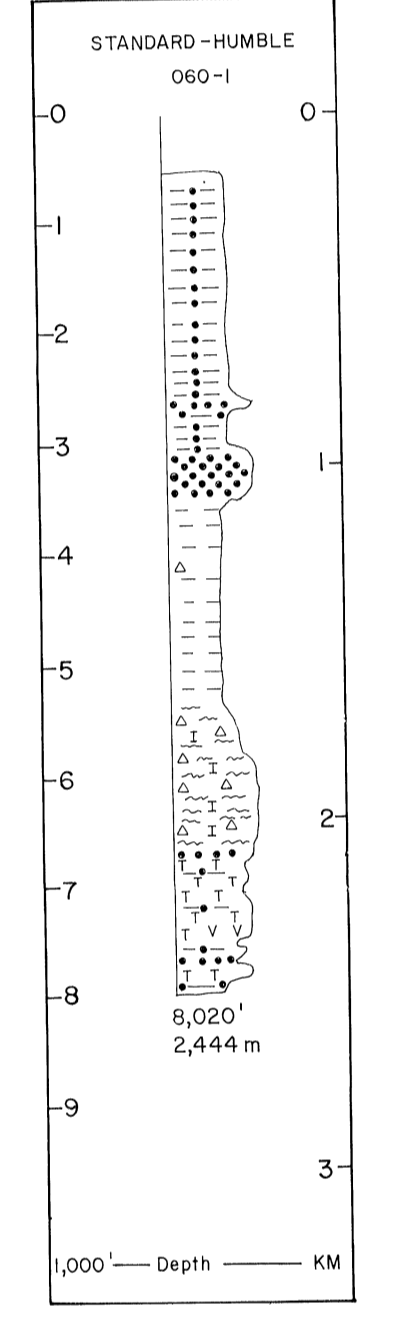
SAMPLE PREFIX	SHIP	CRUISE DATE	REFERENCES (Cited in pamphlet)
VE	R/V VELERO	----	Uchupi and Emery (1963).
ANTI	R/V MELVILLE	6/1970	Silver and others (1971). R/V MELVILLE sample logbook, unpublished. Foraminifers identified by Flotoy Smith of the U.S. Geological Survey (written commun., 1971).
KZ	R/V KELEZ	9/1973	E.A. Silver, D. S. McCulloch, and J. R. Curry (written commun., 1980). R/V KELEZ sample logbook, unpublished.
AQ	Aquatronics, Inc.	1974	Earth Sciences Associates (1974) Earth Sciences Associates (written commun., 1974).
NCAL	R/V LEE	11/1975	R/V LEE sample logbook, unpublished. Foraminifers identified by Robert Arnal of the U.S. Geological Survey (written commun., 1980). Nannofossils identified by David Bakry of the U.S. Geological Survey (written commun., 1980).

SAMPLE SITES - Numbers refer to pamphlet

ANTI-1-20C	●	Core
VE-D7	▲	Dredge-Position approximate; apex of triangle indicates approximate ship heading
OCS CAL 78-164 No. 1	✦	Exploratory well-See stratigraphic columns for description of lithology



STRATIGRAPHIC COLUMN -- SANTA MARIA BASIN, CENTRAL CALIFORNIA

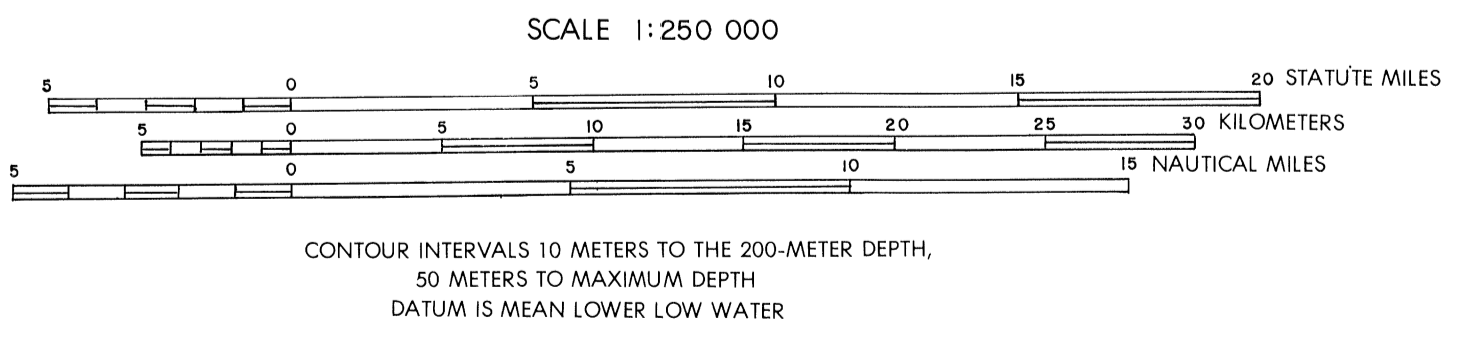
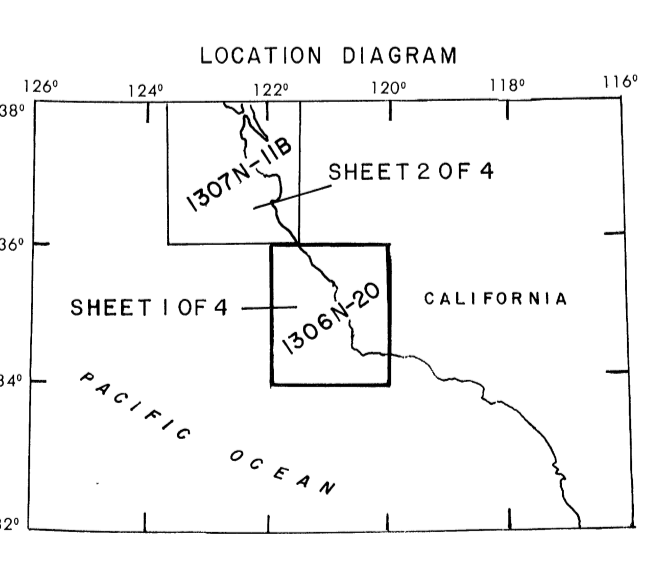


EXPLANATION

●	Sandstone	▲	Cherty
—●—	Siltstone	I	Limestone
≡	Clay and shale	†	Volcanic tuff and ash
⋈	Siliceous shale	v	Volcanic flows or intrusive rocks

Modified from Ziegler and Cassell (1978)

Bathymetric base from National Ocean Survey, 1967  
Map 13666-20



MAPS SHOWING LOCATIONS OF SELECTED PRE-QUATERNARY ROCK SAMPLES FROM 34°30' NORTH LATITUDE TO 42° NORTH LATITUDE, CALIFORNIA CONTINENTAL MARGIN

By

David S. McCulloch, Pamela A. Utter, and Julie S. Menack

Explanatory pamphlet accompanies map