

Horizontal scale = 10,000 ft/in
Vertical exaggeration = 74.9

Horizontal scale = 2,000 ft/in
Vertical exaggeration = 15.0

EXPLANATION

Formation contact ————
Member contact - - - - -
Minor bed correlations in Caddin Formation ······
C = Highest mention of coarse sand or gravel on drillers' logs or highest occurrence of gravelly coarse sand in cuttings from well CHN-635
R = Highest mention of red, pink, or white clay on drillers' logs or highest occurrence of red sediments in cuttings from well CHN-635
G = Highest occurrence of gray clay below the top of the Cape Fear Formation in cuttings from well CHN-635

Drill hole depths in feet.

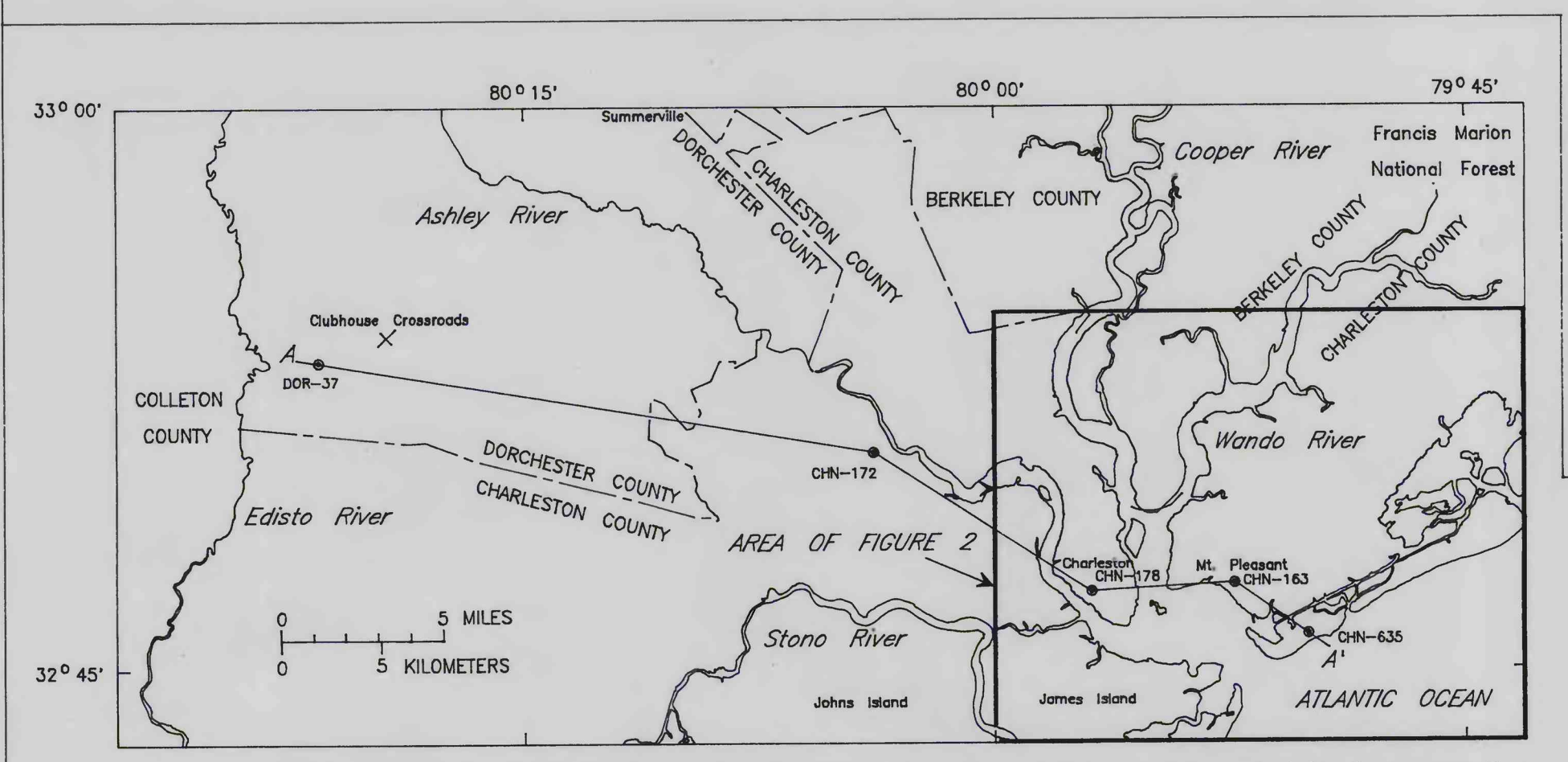
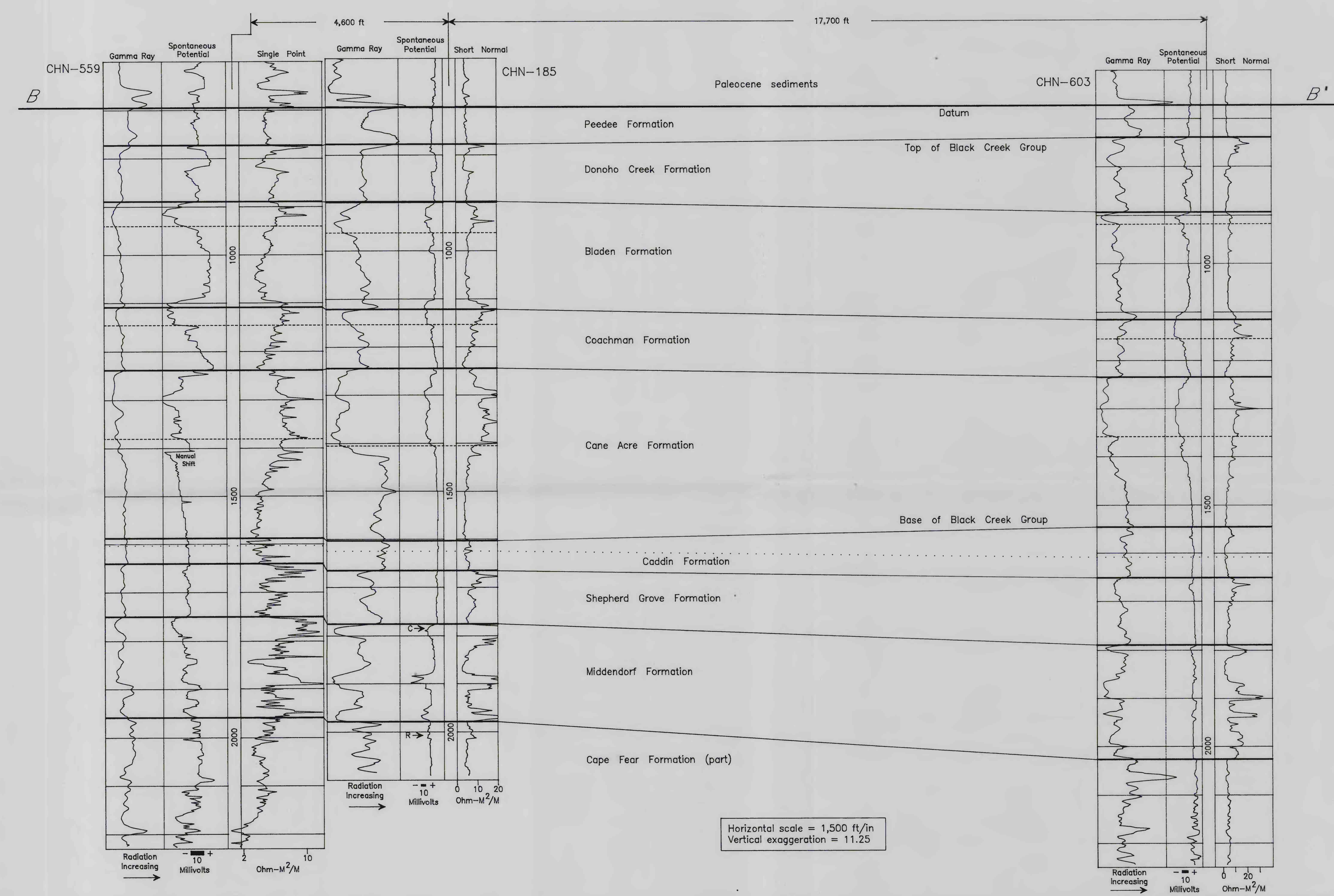


Figure 2. Location of wells and geologic sections in the Charleston-Mt. Pleasant, South Carolina, area.

System	Stage	Gohn, 1992 This report	Gohn and others 1977	Gohn and others 1978	Brown and others 1979
Cretaceous	Upper Cretaceous	800 Peedee Formation	800		800
		873 Donoho Creek Formation			A
		1,072 Bladen Formation		K6	1,100
	Companion	1,214 Coachman Formation			B
		1,344 Cane Acre Formation	1,340		
		1,544 Caddin Formation		K5	1,540
	Santonian	1,644 Shepherd Grove Formation			C
		1,754 Middendorf Formation		K4	
		1,861 Cape Fear Formation	1,860		1,860
	Cenozoic(?)	2,288 Clubhouse Formation			D
		2,336 Beech Hill Formation		K2	F
		2,417 Basalt	2,462	K1	
		2,464 Basalt			

Figure 3. Stratigraphic column for the Upper Cretaceous formations in the Charleston-Mt. Pleasant area. Correlation of the units used in this report with previously used formal and informal units are indicated. Depths of the formation contacts (in ft) in the USGS-Clubhouse Crossroads #1 stratigraphic test hole are listed; relative thicknesses of units are indicated.



Horizontal scale = 1,500 ft/in
Vertical exaggeration = 11.25

STRATIGRAPHIC FRAMEWORK FOR GEOLOGIC AND GEOHYDROLOGIC STUDIES
OF THE SUBSURFACE CRETACEOUS SECTION NEAR CHARLESTON, SOUTH CAROLINA

By
Bruce G. Campbell and Gregory S. Gohn
1994