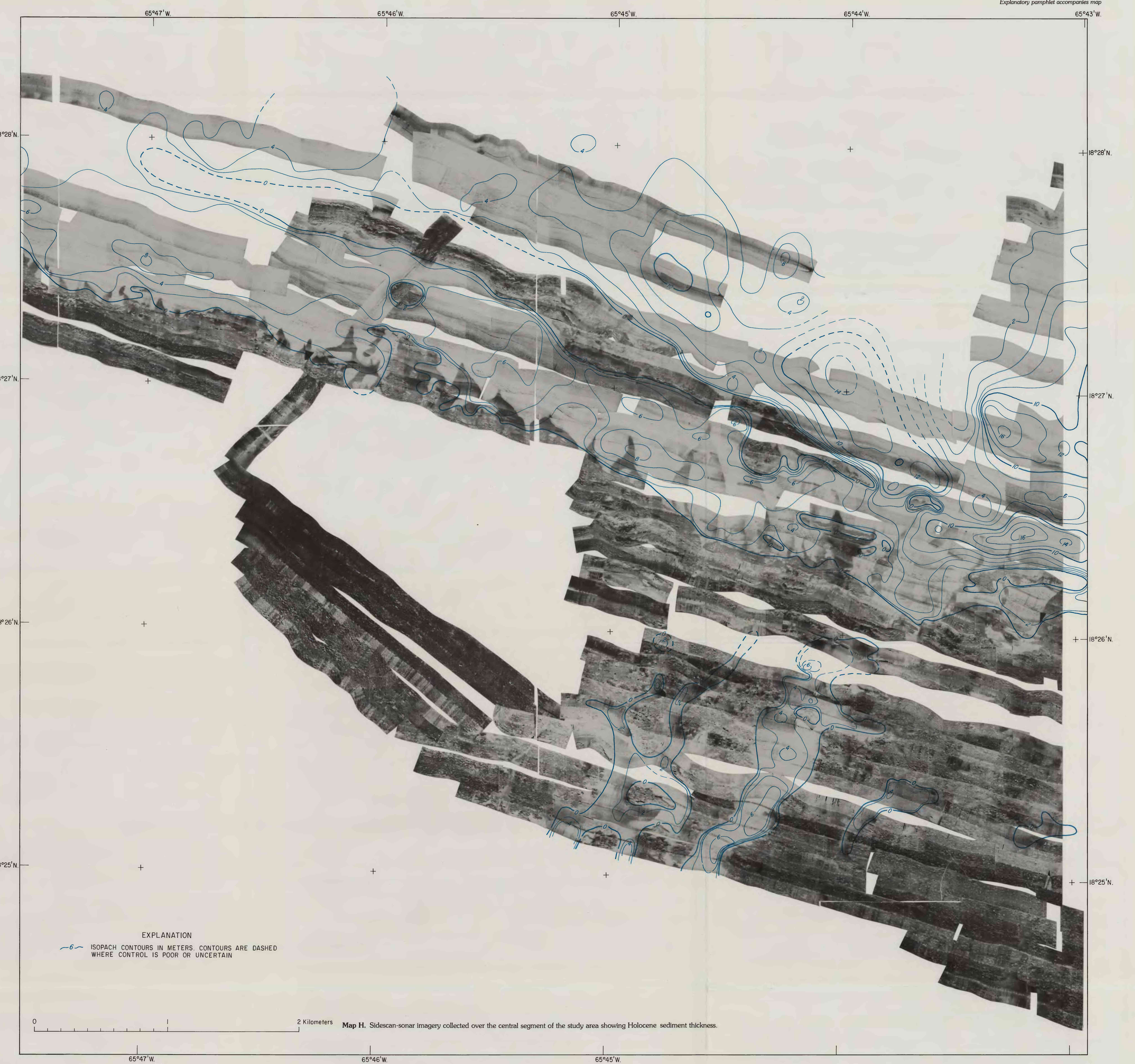
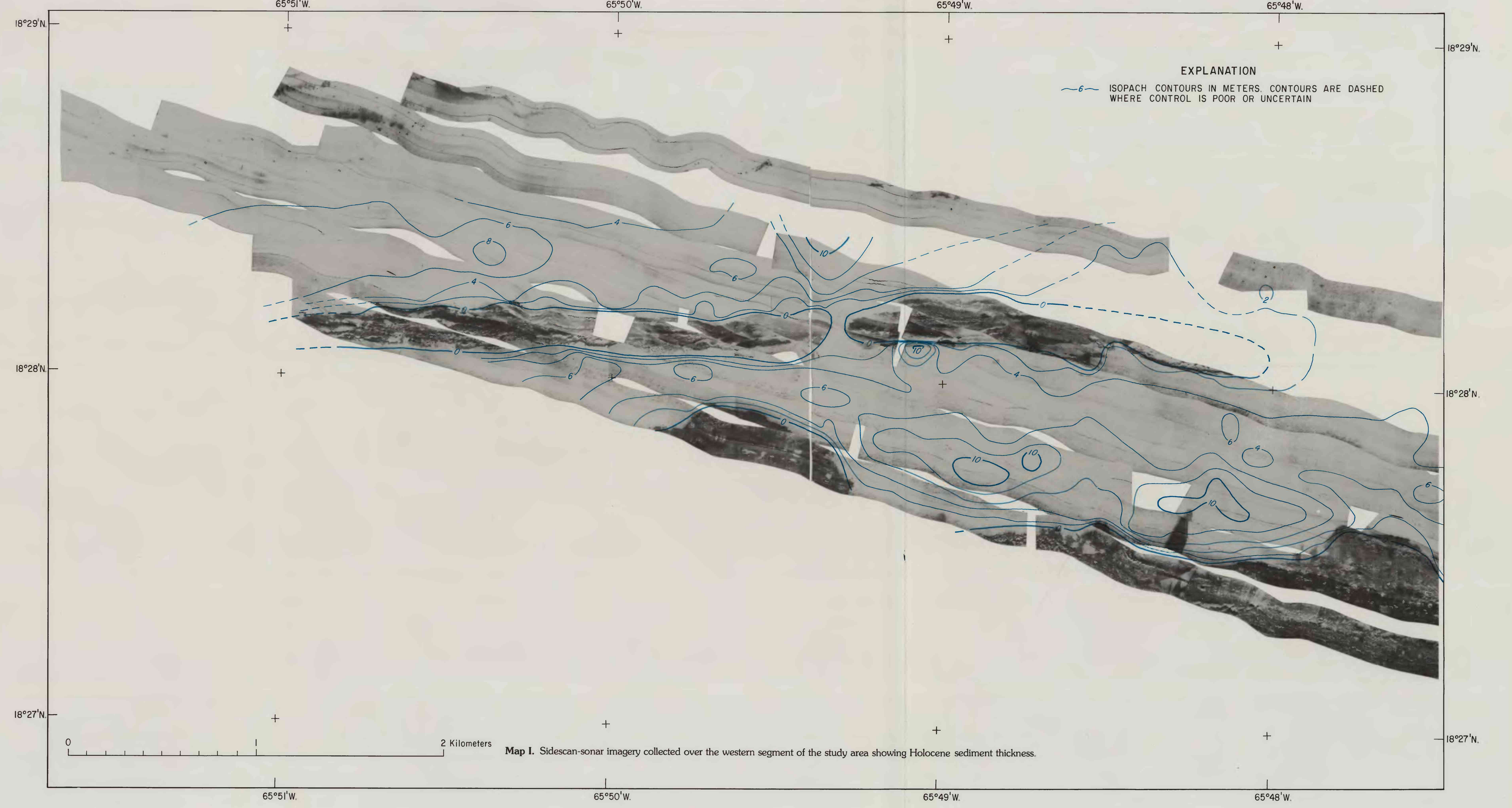


Map G. Sidescan-sonar imagery collected over the eastern segment of the study area showing Holocene sediment thickness.



Map H. Sidescan-sonar imagery collected over the central segment of the study area showing Holocene sediment thickness.



Map I. Sidescan-sonar imagery collected over the western segment of the study area showing Holocene sediment thickness.

HIGH-RESOLUTION MARINE GEOLOGIC MAPS SHOWING SEDIMENT DISTRIBUTION ON THE INSULAR SHELF OFF LUQUILLO, PUERTO RICO

By
William C. Schwab¹, Rafael W. Rodriguez², William W. Danforth¹,
Marguerite H. Gowen³, E. Robert Thielert⁴, and Thomas F. O'Brien¹

¹U.S. Geological Survey, Woods Hole, Massachusetts
²U.S. Geological Survey, San Juan, Puerto Rico
³U.S. Geological Survey, Menlo Park, California
⁴Duke University, Durham, North Carolina

Any use of trade, product, or firm names in this publication is for descriptive purposes only and does not constitute endorsement by the U.S. Government.
For sale by U.S. Geological Survey, Map Distribution, Box 24286, Federal Center, Denver, CO 80225