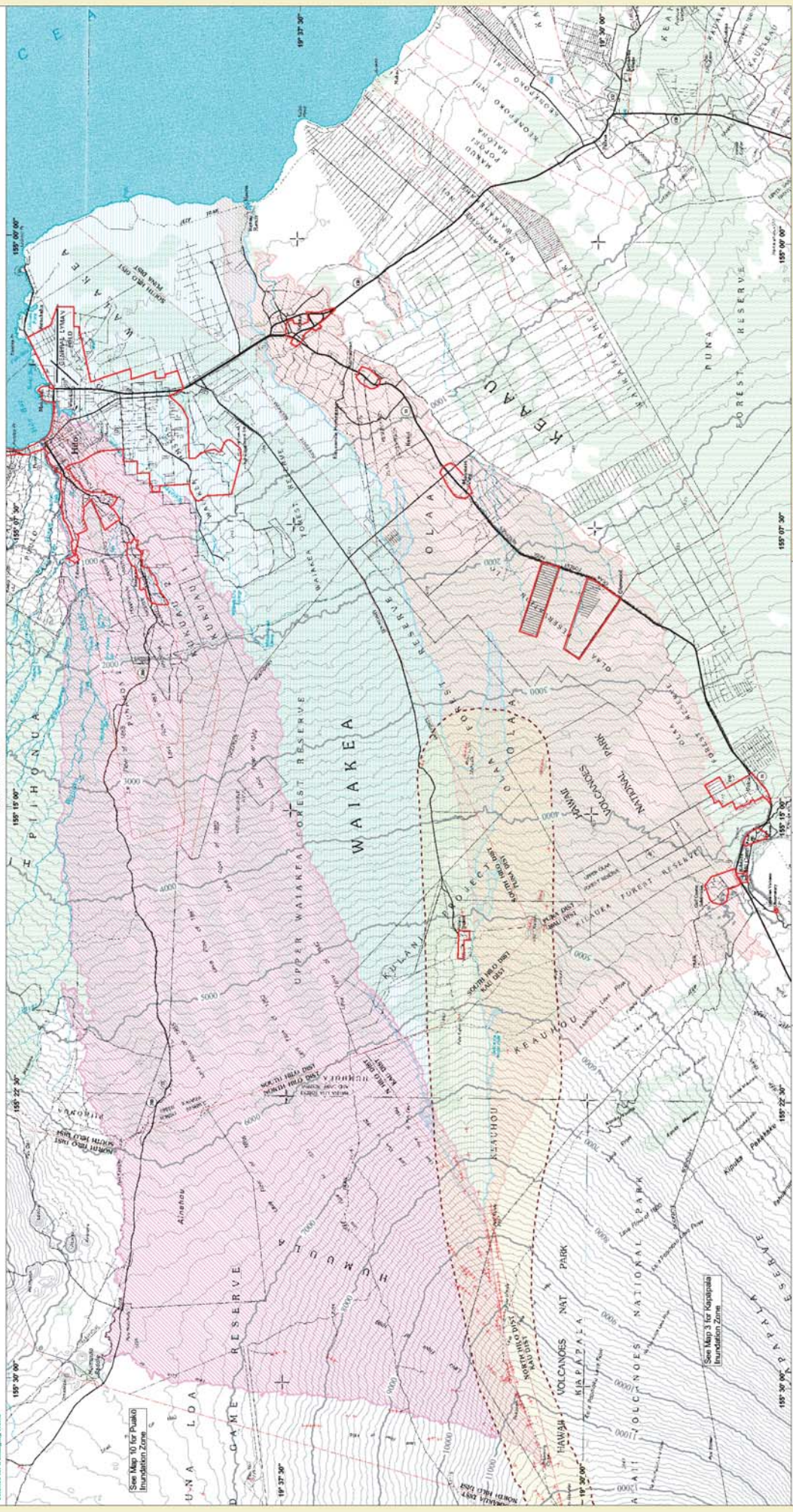




U.S. DEPARTMENT OF THE INTERIOR
U.S. GEOLOGICAL SURVEY

Submitted in cooperation with the
FEDERAL EMERGENCY MANAGEMENT AGENCY
and the
COUNTY OF HAWAII

MICELANEOUS FIELD STUDIES MAP # 2-2001
SHEET 2 OF 19



- Explanation**
- Kaimama inundation zone
 - Waialeale inundation zone
 - Volcano - Mountain View inundation zone
 - Rift zone buffer
 - Community/infrastructure
 - Pressure and cracks
 - Contour interval 100 feet
 - Major road
 - Minor road

Base map
USGS 1:50,000-scale (7.5-minute) topographic maps
of the Hawaiian Islands, including the Kilauea Iki
National Monument and the Waialeale Forest Reserve
and the Waialeale National Park. The base map
was derived from aerial photography taken in 1986.
Elevation data are from a 100-meter grid, UTM
Projection, datum: American Spheroid, 1983
Zone 18N, datum: Hawaiian Islands.
This map is for informational purposes only. It is not
to be used for any other purpose without the permission
of the Director of State Emergency Services or the USGS.



WARNING: Lava-flow inundation analysis only valid for lava flows once they have moved outside the rift-zone buffer (yellow zone bounded by dashed line)

Available online at <http://geopubs.wr.usgs.gov/maps-of-hawaii/>

Approved for publication August 8, 2002

Maps Showing Lava Inundation Zones for Mauna Loa, Hawaii
by
Frank A. Trusdell, Peter Graves, and Christopher R. Tincher
2002