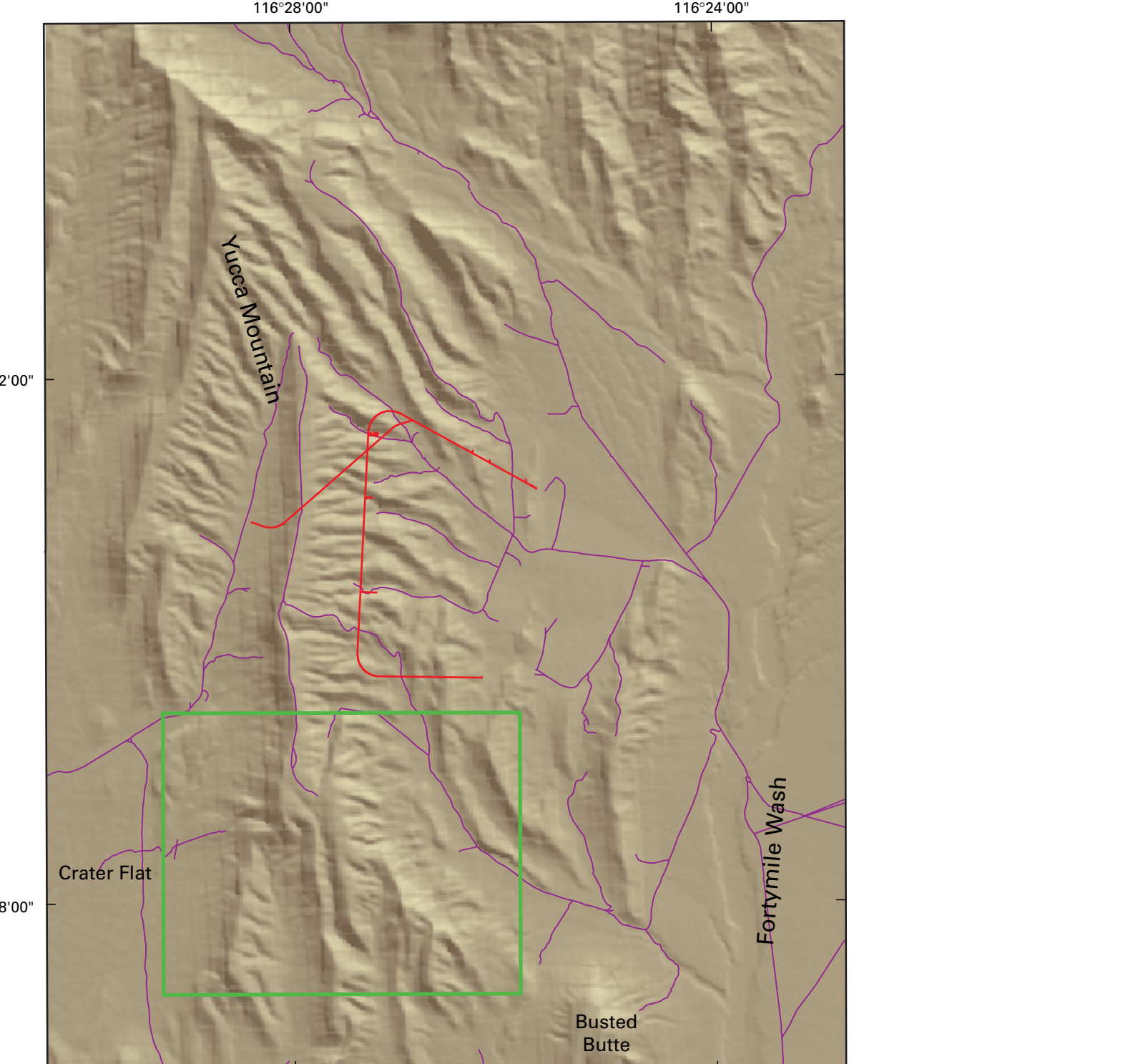
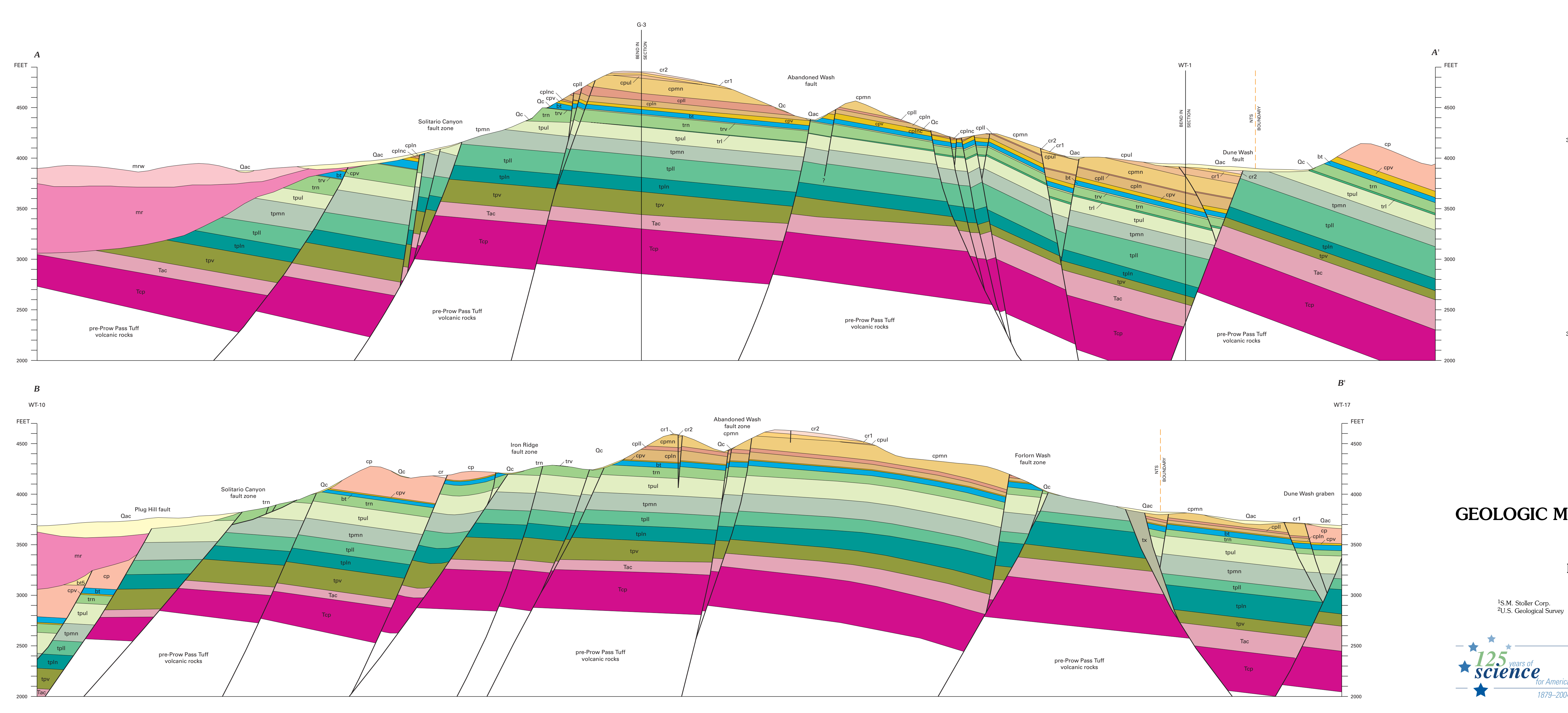


Base from U.S. Geological Survey Digital Line Graphs (DLG), 1:62,500, of quadrangles 21 and 22 from orthophoto mission flown by USGS in 1990 for the U.S. Department of Energy. Polyconic projection, 5,000-foot grid based on Nevada State Plane coordinates, 1927 North American datum. SCALE 1:60,000. CONTOUR INTERVAL 10 FEET. NATIONAL GEODETIC VERTICAL DATUM OF 1929. New detailed geologic mapping by R.P. Dickerson and R.M. Drake II, November 2001 to May 2002. Mapping outside of the detailed mapping boundary from Day, Dickerson, and others (1998). Digital cartography by R.M. Drake II, G.A. San Juan, and Alessandro J. Donatich. Edited by Alessandro J. Donatich. Manuscript approved for publication August 22, 2003.



GEOLOGIC MAP OF SOUTH-CENTRAL YUCCA MOUNTAIN, NYE COUNTY, NEVADA

By Robert P. Dickerson¹ and Ronald M. Drake II² 2004