

LAND STATUS

[Symbol]	FEDERAL PHOSPHATE TITLE, FEDERAL SURFACE TITLE
[Symbol]	FEDERAL PHOSPHATE TITLE, STATE SURFACE TITLE
[Symbol]	FEDERAL PHOSPHATE TITLE, PRIVATE SURFACE TITLE
[Symbol]	STATE PHOSPHATE TITLE, FEDERAL SURFACE TITLE
[Symbol]	STATE PHOSPHATE TITLE, STATE SURFACE TITLE
[Symbol]	STATE PHOSPHATE TITLE, PRIVATE SURFACE TITLE
[Symbol]	PRIVATE PHOSPHATE TITLE, FEDERAL SURFACE TITLE
[Symbol]	PRIVATE PHOSPHATE TITLE, PRIVATE SURFACE TITLE

LEASE DATA

KNOWN PHOSPHATE LEASING AREA

PHOSPHATE LEASE

Federal Leases - number with I or BL prefix
Federal Preference Right Lease Application - number with I prefix and PRLA suffix
State Leases - Four digit number with or without R suffix
Private Leases - not shown

References:
Leasable Mineral Plats, effective 12-79, Bureau of Land Management, Boise, Idaho
State Records, effective 8-80, Department of Lands, Boise, Idaho

Note - Lot locations compiled from Master Title Plats. Legal descriptions of lot locations, lot acreages, and updated surveys of section boundaries are on file with Bureau of Land Management

LEGEND

- Ppm
- MEADE PEAK PHOSPHATIC SHALE MEMBER OF THE PHOSPHORIA FORMATION (LOWER PERMIAN) - Phosphorite and mudstone. Approximately 150 to 200 ft thick
- PHOSPHATE MINE PIT BOUNDARY - As of September 1979
- FAULT SEPARATION - No calculated resource
- FAULT OVERLAP - Twice calculated resources if covered by 1500 ft. or less of overburden
- OVERBURDEN ISOPACHS - On top of the Meade Peak Phosphatic Shale Member of the Phosphoria Formation. Only 300, 600, 1500-foot isopachs are shown. Dashed where isopachs are projected past control points or where structure is uncertain
- RESOURCE BLOCK END BOUNDARY
- IDENTIFIED PHOSPHATE RESOURCES - Excluding outcrop or projected outcrop of the Meade Peak Phosphatic Shale Member

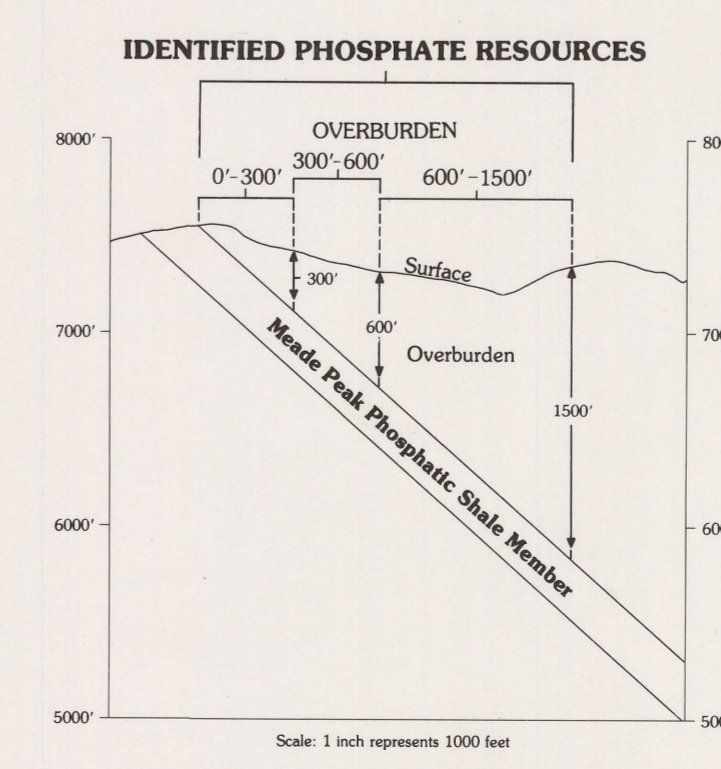
Note - Phosphate resources were not calculated for small block in the SE 1/4 sec. 1, T. 10. S., R. 44 E.

Map units and symbols shown with an asterisk are not on this map.

IDENTIFIED PHOSPHATE RESOURCES, LEASES, AND OWNERSHIP
MAPS SHOWING SELECTED GEOLOGY AND PHOSPHATE RESOURCES OF THE HARRINGTON PEAK QUADRANGLE, BEAR LAKE AND CARIBOU COUNTIES, IDAHO

By
Pamela Dunlap Derkey,¹ Bea Johnston,¹ Pamela Palmer,¹ and R. David Hovland²
¹Idaho Bureau of Mines and Geology
²Bureau of Land Management
1985

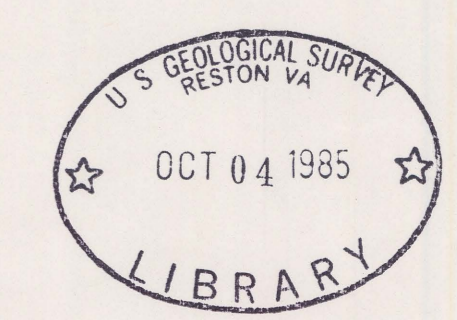
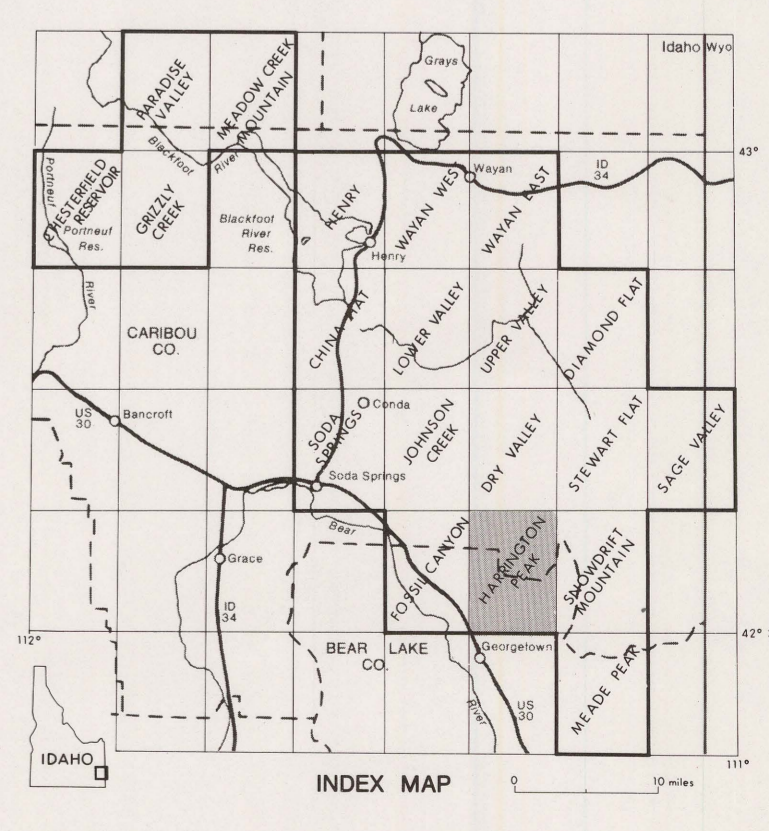
Geology compiled by Pamela Palmer from Cressman (1964, pl. 3), Oberlander and others (written commun., 1981), and Pamela Palmer (unpublished data, 1981); geologic interpretation by Bea Johnston and R. David Hovland; overburden isopachs by Bea Johnston; pit boundaries by Pamela Dunlap Derkey; resource blocks by Pamela Palmer; leases and ownership compiled by Alexandra Zemanek, assisted by Marge Lane and Mahesh Fakouratsay; cartography by David Taylor and Gie C. Johnson



RESOURCES FOR HARRINGTON PEAK QUADRANGLE

Overburden	0'-300'	300'-600'	600'-1500'	TOTAL
Million Short Tons	26.5	73.7	147	486

Resources calculated to three significant figures for phosphate rock containing $\geq 16\%$ P₂O₅.



MR-74
M(200) 43
MR 74
c. 2
sheet 3

