

A

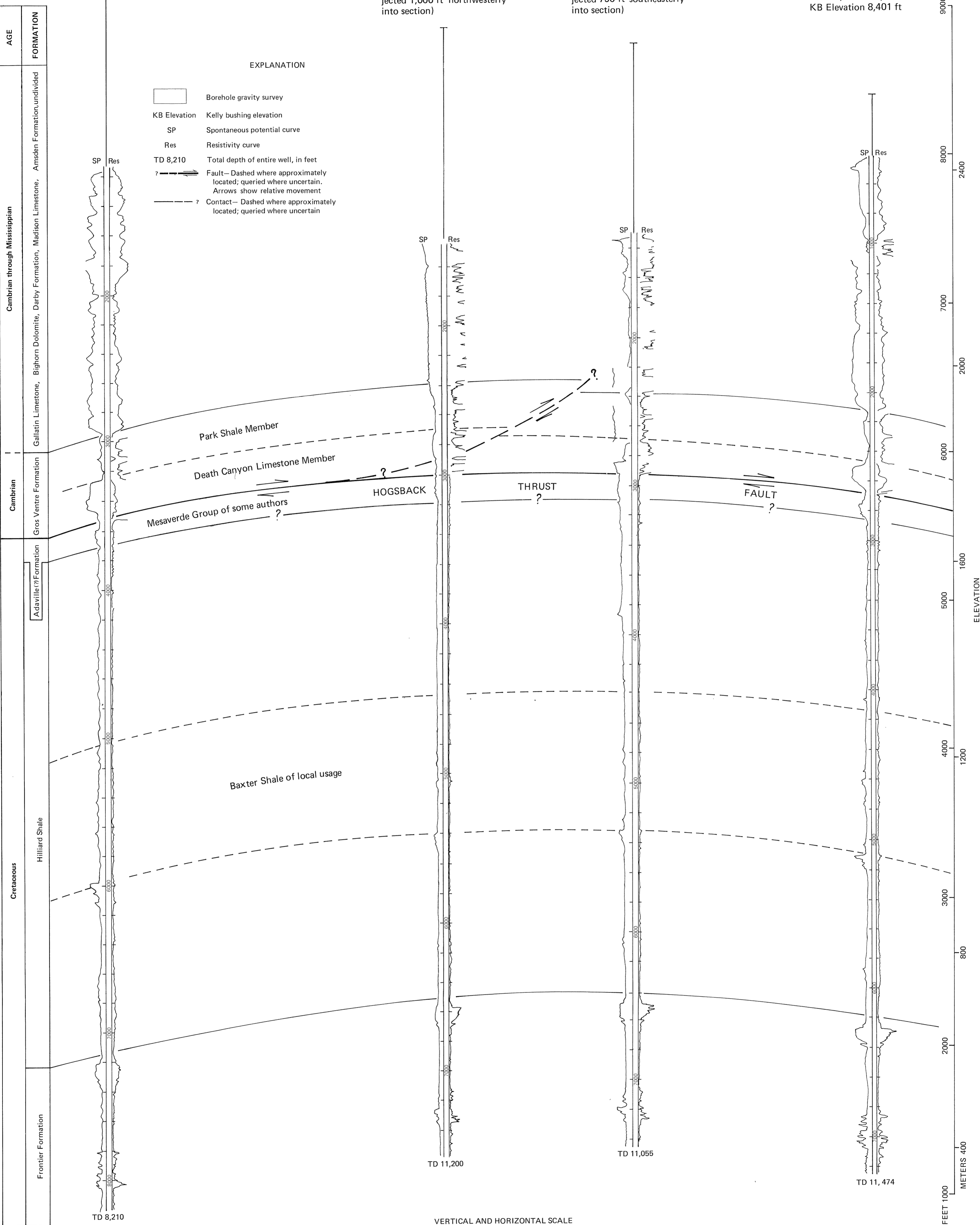
A'

Mountain Fuel Supply Co.  
Dry Piney Unit Number 16  
Sec. 16, T. 27 N., R. 114 W.  
KB Elevation 9,062 ft

Mountain Fuel Supply Co.  
Dry Piney Unit Number 19  
Sec. 15, T. 27 N., R. 114 W.  
KB Elevation 8,855 ft (pro-  
jected 1,000 ft northwesterly  
into section)

Mountain Fuel Supply Co.  
Dry Piney Unit Number 26  
Sec. 10, T. 27 N., R. 114 W.  
KB Elevation 8,771 ft (pro-  
jected 790 ft southeasterly  
into section)

Belfer Natural Gas Co.  
Dry Piney Unit Number 4  
Sec. 10, T. 27 N., R. 114 W.  
KB Elevation 8,401 ft



STRATIGRAPHIC CROSS SECTION A-A'

BOREHOLE GRAVITY SURVEY IN THE DRY PINEY OIL AND GAS FIELD,  
BIG PINEY-LA BARGE AREA, SUBLETTE COUNTY, WYOMING

By  
L. A. Beyer and F. G. Clutsom

1978