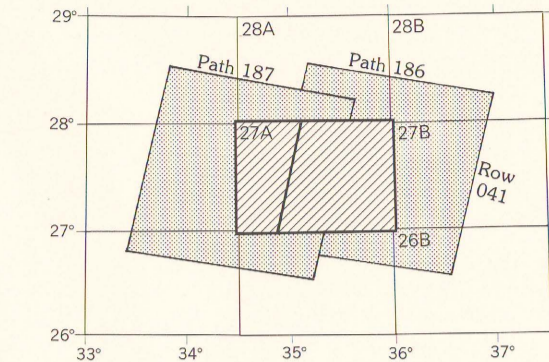




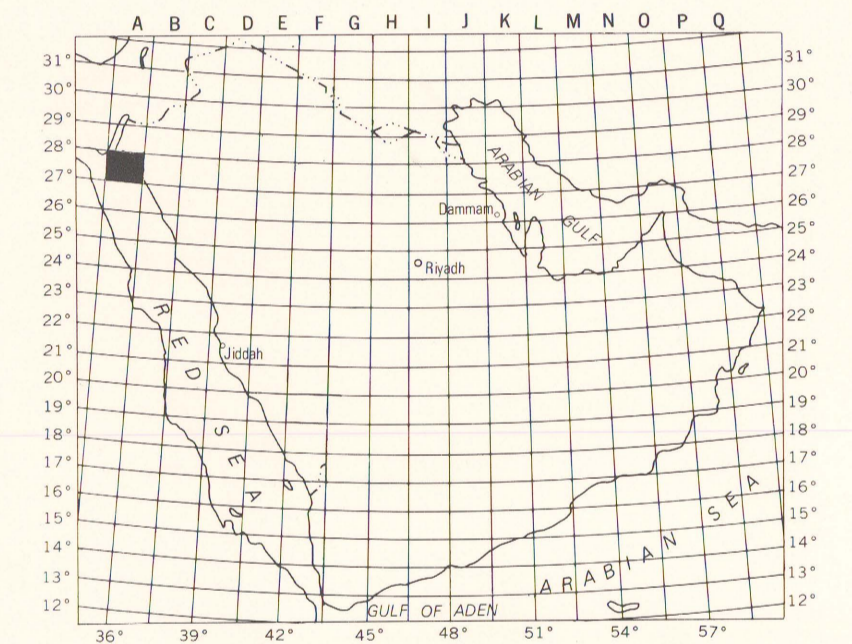
Satellite Image and Adjoining Sheet Index



Path/row	Image ID	Date acquired
186/41	2319-07243-7	Dec. 7, 1975
187/41	1180-07435-7	Jan. 19, 1973

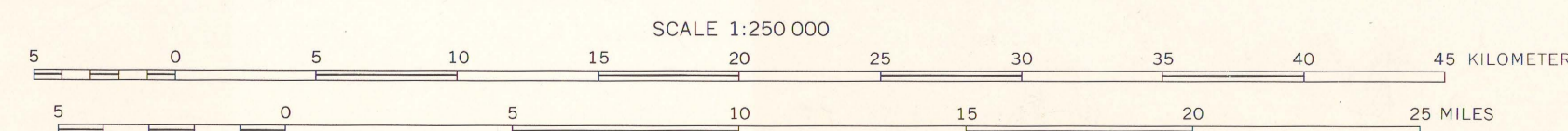
Imagery acquired by NASA Landsat
Multispectral Scanner (MSS)

Adjoining Sheet Index	
28A Jabal al Lawz	28B Tabūk
27A Al Muwayliḥ	27B Shaḡhab
26A Sharm Jazzaḥ	26B Al Wajh



Index to 1:250,000-scale Landsat image maps
of the Arabian Peninsula showing location
of the Al Muwayliḥ Quadrangle, 27A

Prepared by the United States Geological Survey for the Kingdom of Saudi Arabia from computer enhanced Landsat MSS band 7 imagery.
Imagery controlled to photoidentified ground positions. The root-mean-square error in position of well-defined features in relation to the graticule is approximately 90 meters.
Transverse Mercator Projection



Magnetic declination for 1981 is 1°40' E over entire area. Annual rate of change is negligible

U.S. GEOLOGICAL SURVEY
LIBRARY
AUG 3 0 2010
RESTON, VA

LANDSAT IMAGE MAP OF THE
AL MUWAYLIḤ QUADRANGLE
SHEET 27A
KINGDOM OF SAUDI ARABIA
1982

U.S. GEOLOGICAL SURVEY
LIBRARY - RESTON
3 1818 00578153 7

M(670)5.1s
250
M986g
c.2