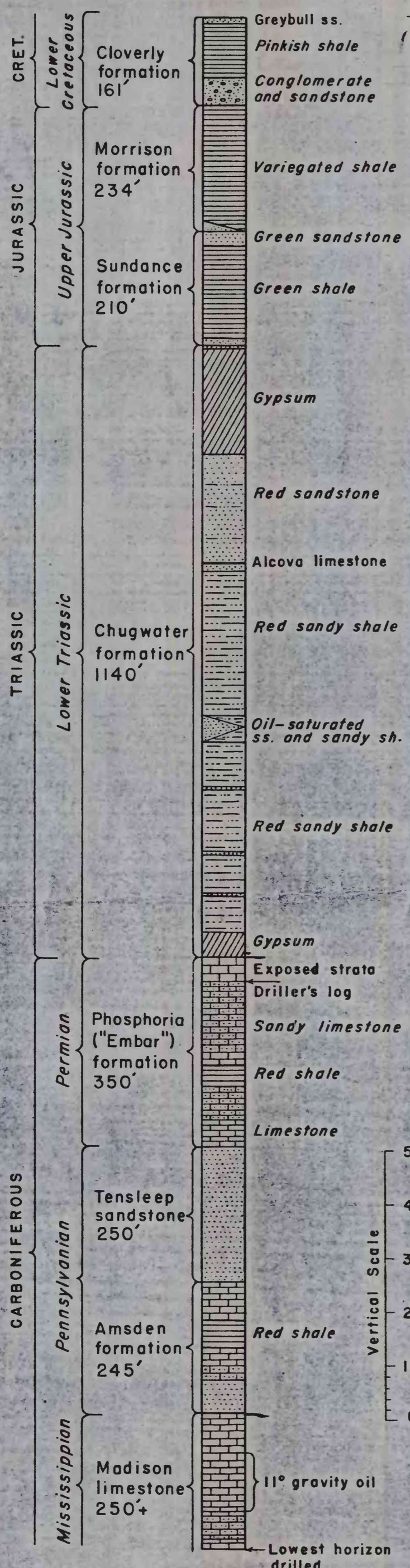
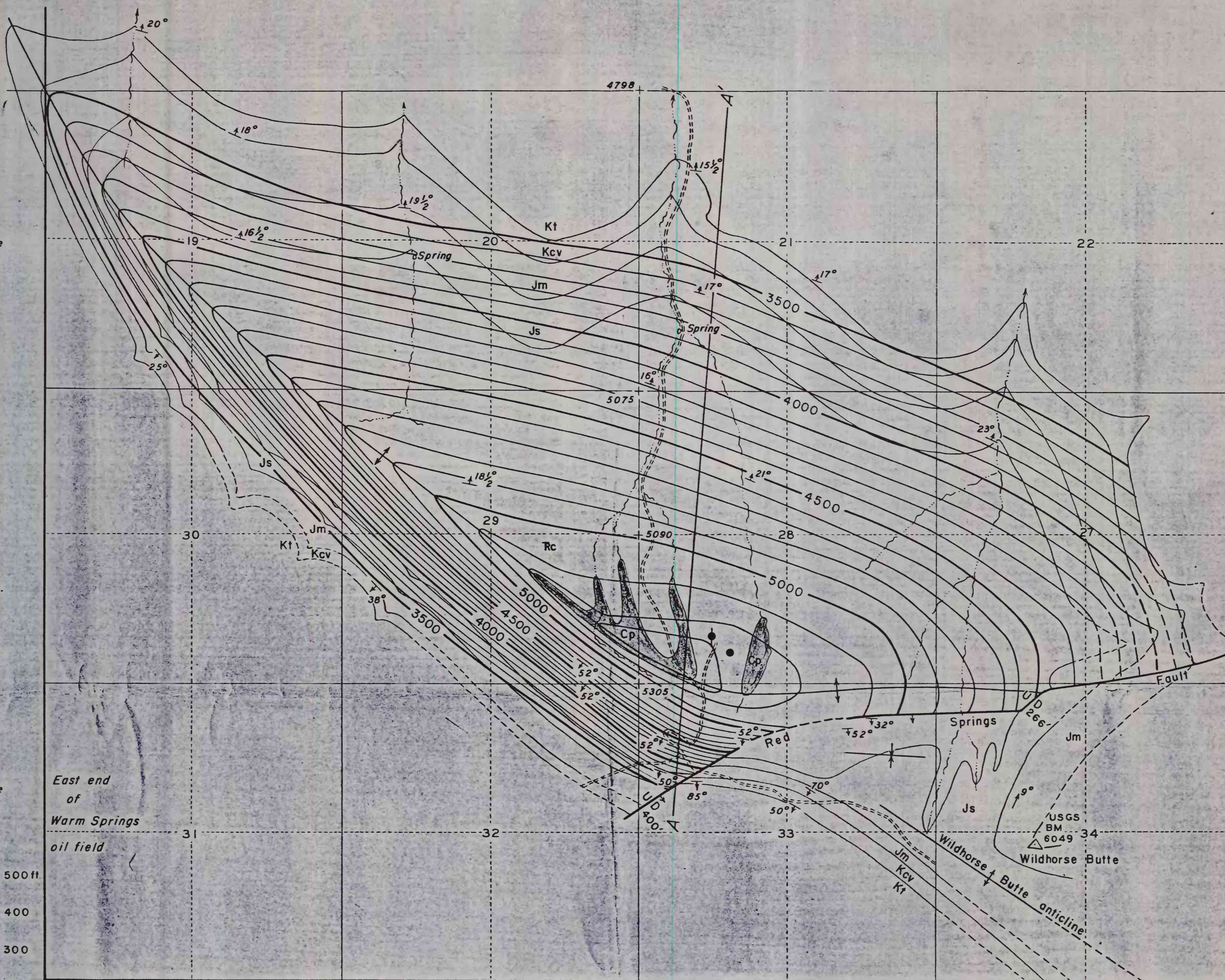
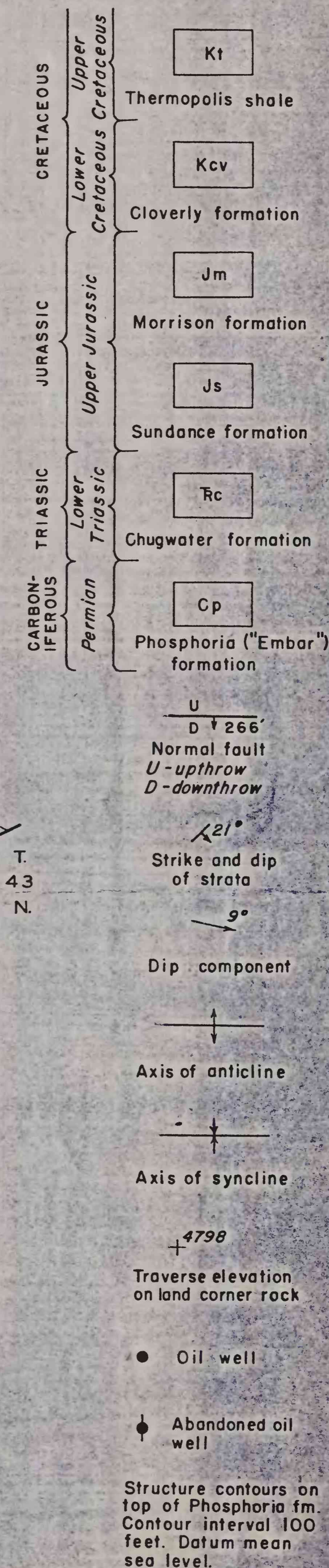


STRATIGRAPHIC COLUMN



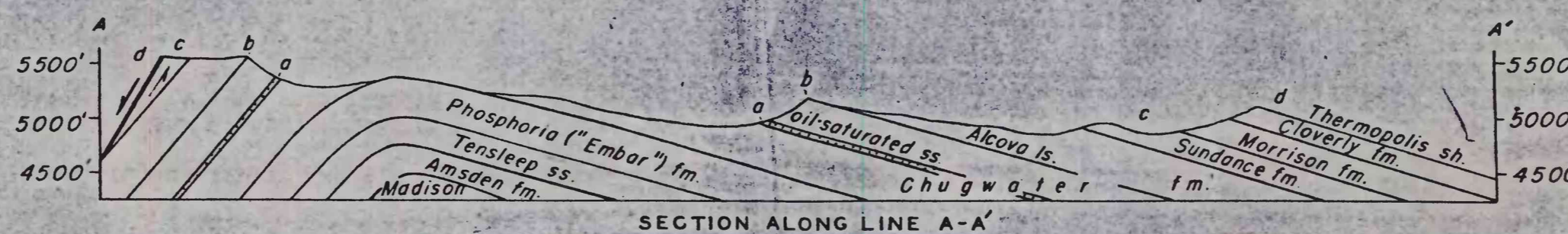
EXPLANATION



Drafting by N. Davis

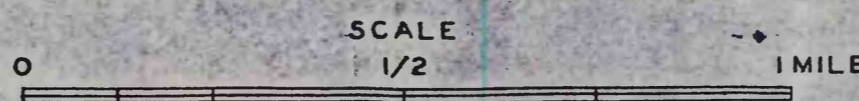
R. 93 W.

Geology by G. E. Dobbin and W. B. Kramer, Oct. 14-21, 1939



UNITED STATES
 DEPARTMENT OF THE INTERIOR
 GEOLOGICAL SURVEY

GEOLOGIC MAP AND SECTION OF RED SPRINGS ANTICLINE
 HOT SPRINGS COUNTY, WYOMING



1939

FO-456

