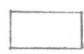



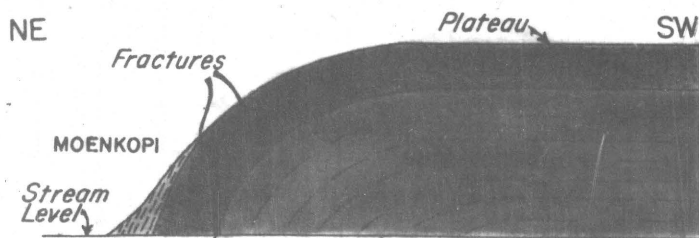


Figure 9
OAK SPRINGS DAM SITE
SHOWING GEOLOGY AT HEAD OF BLACK CREEK CANYON
Geology by E.B.Eckel—1939.

-  ALLUVIUM—SILT, SAND AND CLAY.
-  MOENKOPI FORMATION—MOSTLY SOFT SHALE.
-  COCONINO SANDSTONE.
-  SUPAI FORMATION—MEDIUM-HARD SHALE, MUDSTONE AND SANDSTONE.



Sketch section taken parallel to Black Creek, showing fractures associated with down-turn in rocks.

