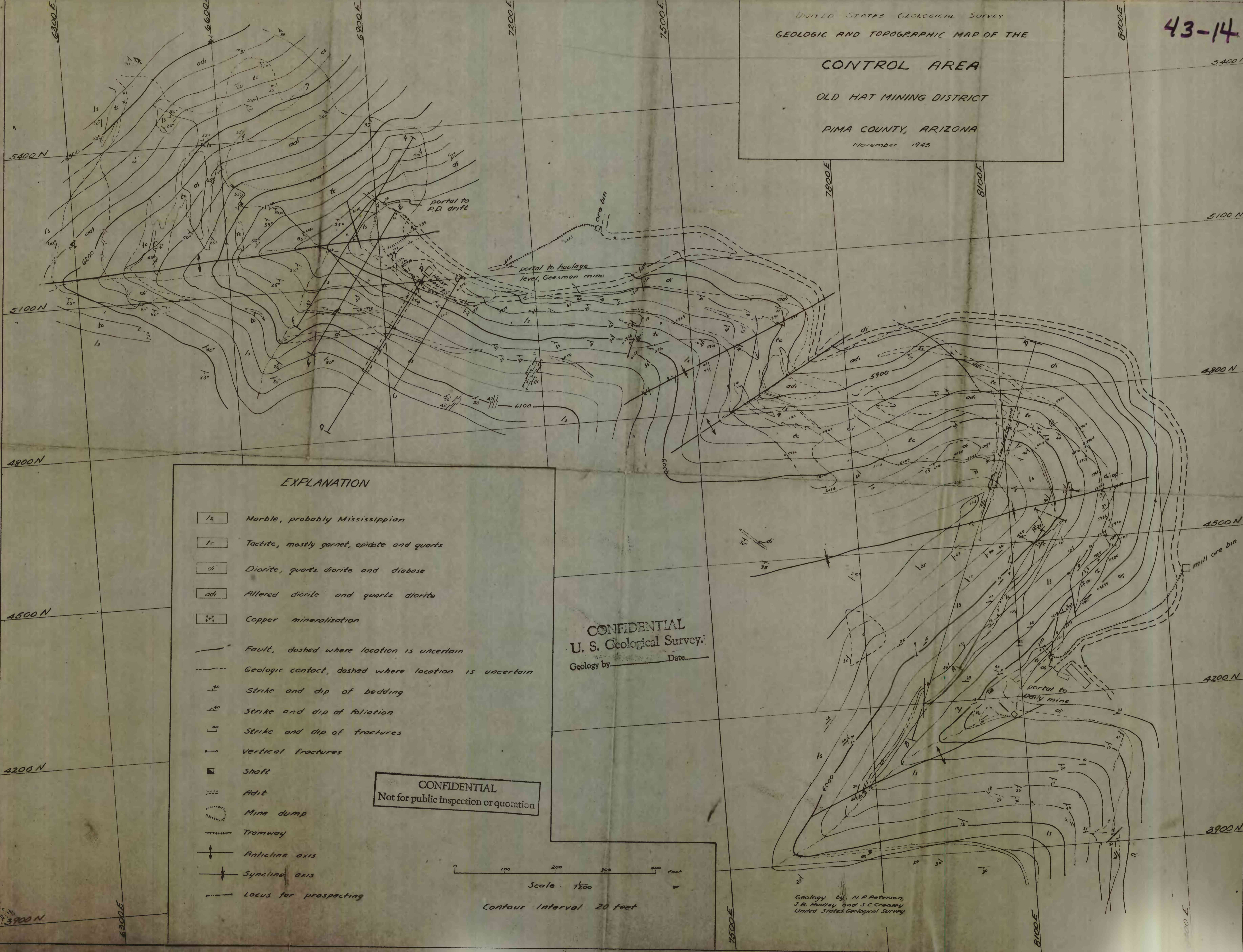


CONTROL AREA

OLD HAT MINING DISTRICT

PIMA COUNTY, ARIZONA

November 1943



EXPLANATION

- ls Marble, probably Mississippian
- tc Tactite, mostly garnet, epidote and quartz
- di Diorite, quartz diorite and diabase
- adi Altered diorite and quartz diorite
- Copper mineralization
- Fault, dashed where location is uncertain
- - - - - Geologic contact, dashed where location is uncertain
- ┌⁴⁰ Strike and dip of bedding
- └⁴⁰ Strike and dip of foliation
- ┌⁴⁰ Strike and dip of fractures
- Vertical fractures
- Shaft
- Adit
- Mine dump
- Tramway
- ↑ Anticline axis
- ↓ Syncline axis
- Locus for prospecting

CONFIDENTIAL
U. S. Geological Survey.
Geology by _____ Date _____

CONFIDENTIAL
Not for public inspection or quotation

Scale: 1" = 1200 feet

Contour Interval 20 feet

Geology by: N.P. Peterson,
J.B. Hadley and S.C. Creasey
United States Geological Survey