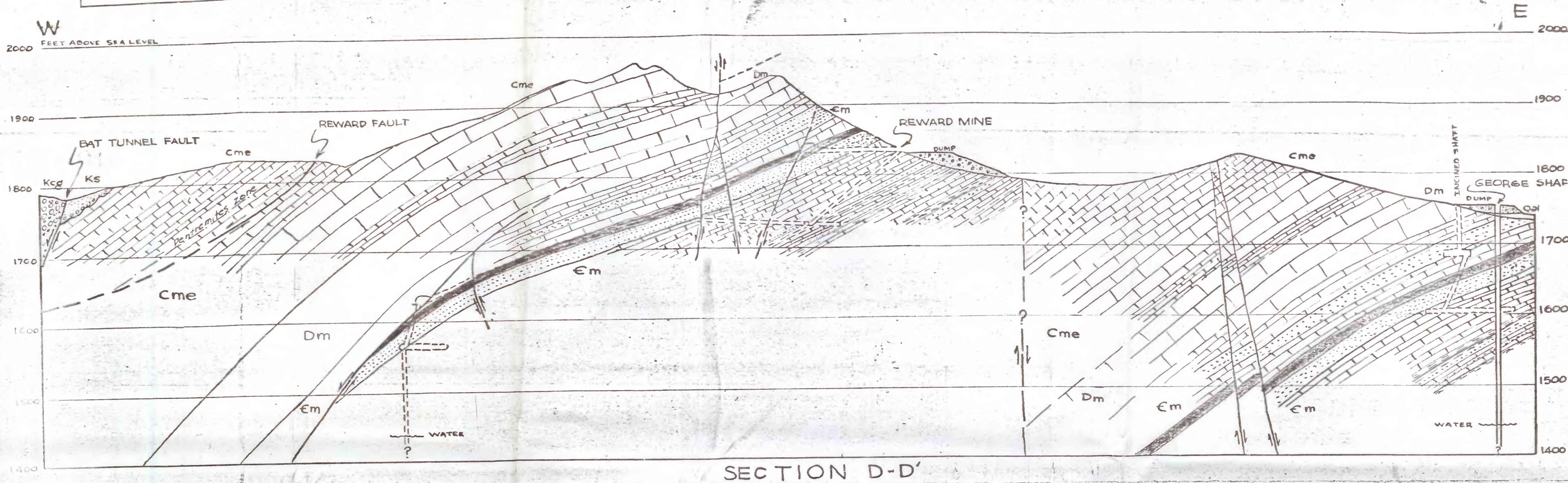


CONFIDENTIAL
Not for public inspection or quotation



EXPLANATION

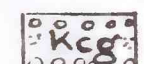


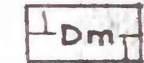

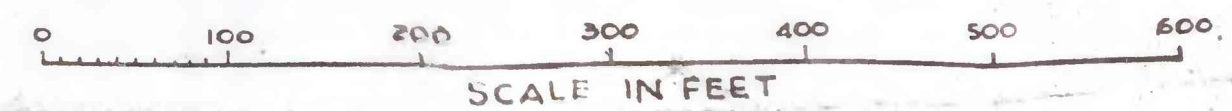
-  CONGLOMERATE
-  RED SANDSTONE & QUARTZ CONGLOMERATE
-  LIMESTONE
-  MAGNESIAN LIMESTONE
-  MINERALIZED BED
LIMESTONE, DOLOMITE, QUARTZITE, & LIMY SHALE

PLATE IV

CONFIDENTIAL
U. S. Geological Survey:
J. B. HADLEY &
Geology by A. B. SILLWATER, JR. Date DEC. 1942

STRUCTURE SECTIONS IN THE REWARD AREA
CASA GRANDE MINING DISTRICT, PINAL CO., ARIZONA



44-8