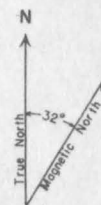


FIGURE 2
GEOLOGIC SKETCH MAP
OF AN AREA EAST OF
LAKE VIRGINIA, WRANGELL DISTRICT,
SOUTHEASTERN ALASKA
SHOWING MAPPED AREAS IN
GLACIER BASIN

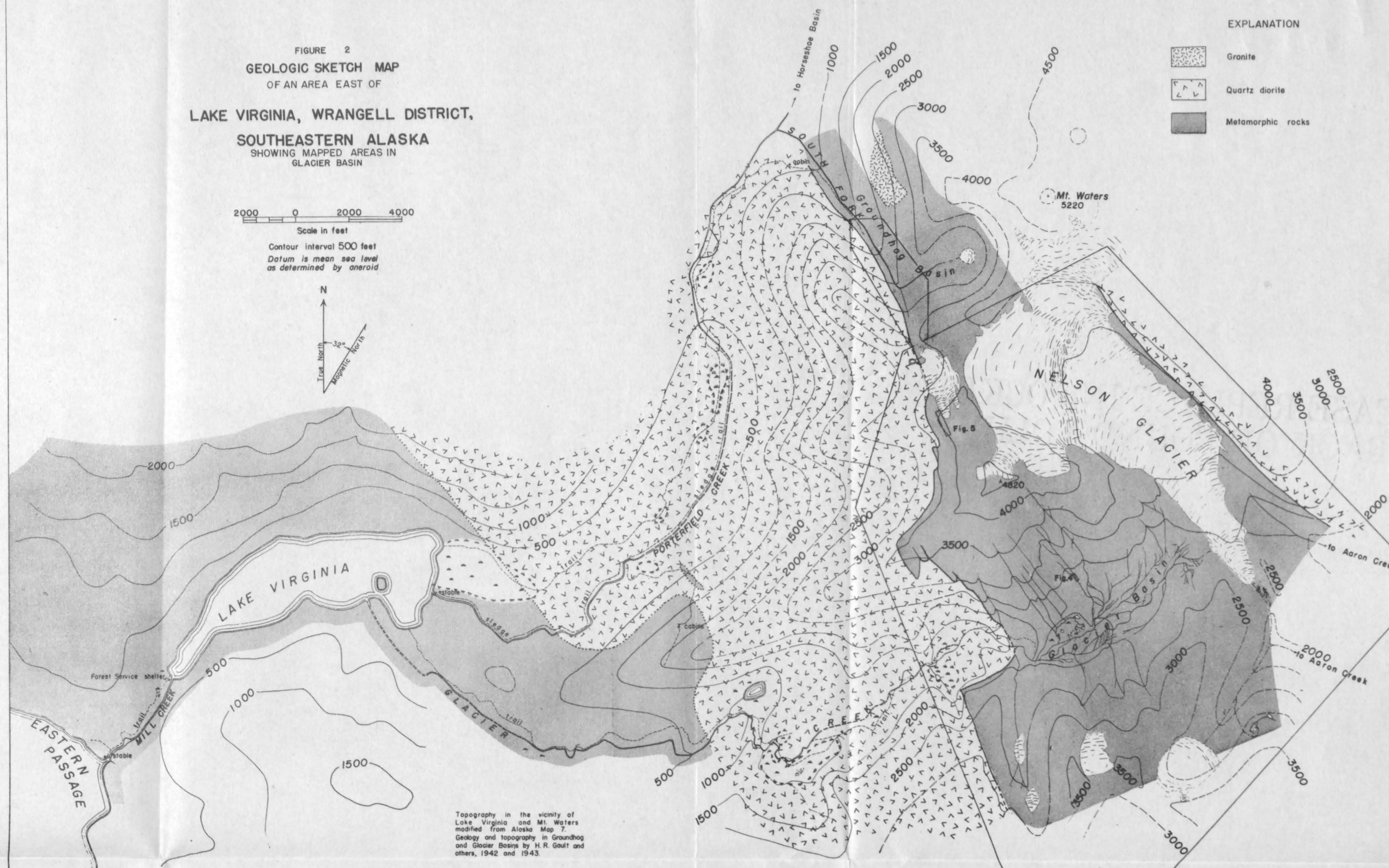
2000 0 2000 4000
Scale in feet

Contour interval 500 feet
Datum is mean sea level
as determined by aneroid



EXPLANATION

- Granite
- Quartz diorite
- Metamorphic rocks



Topography in the vicinity of
Lake Virginia and Mt. Waters
modified from Alaska Map 7.
Geology and topography in Groundhog
and Glacier Basins by H. R. Gault and
others, 1942 and 1943.