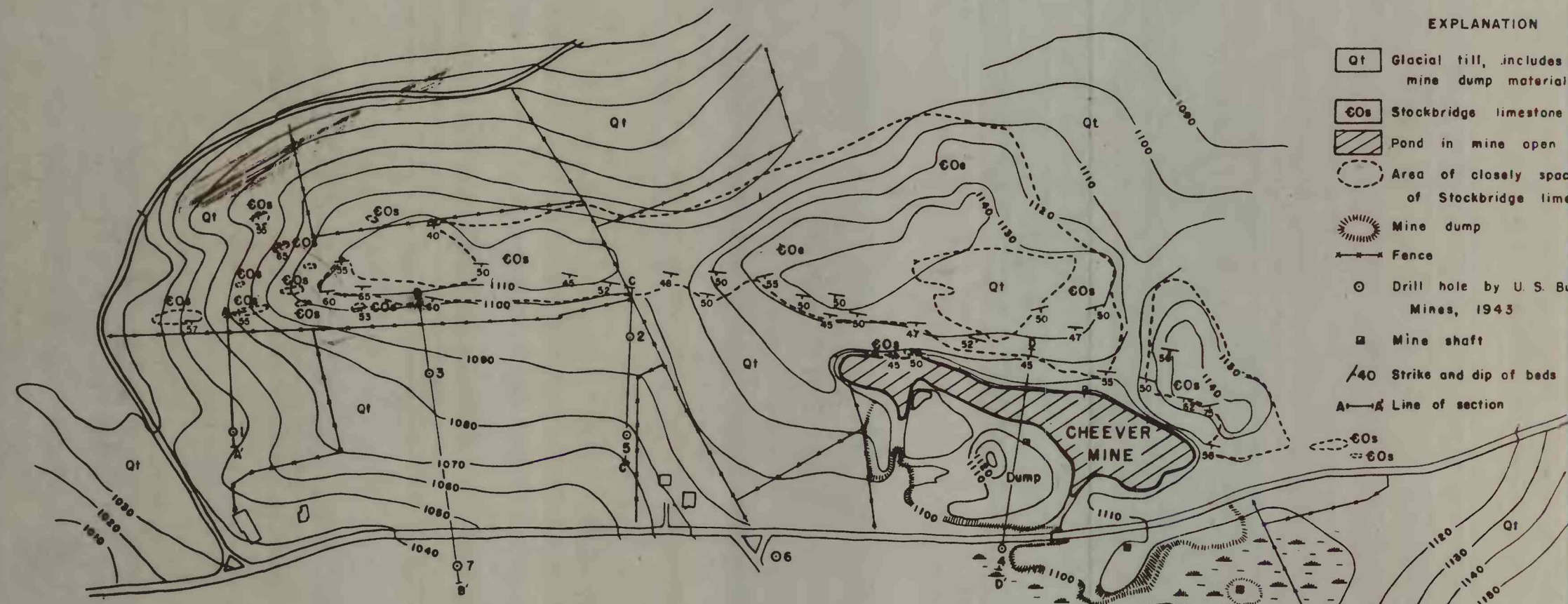




Plate 1
FIG. 1 MAP SHOWING LOCATIONS OF IRON ORE MINES AND PROSPECTS, BERKSHIRE COUNTY, MASS.



TOPOGRAPHIC AND GEOLOGIC MAP OF THE CHEEVER BROWN IRON ORE MINE AND ADJACENT AREA

Scale
0 200 400 600 800 1000 Feet
Contour interval 10 feet
Datum is approximately mean sea level

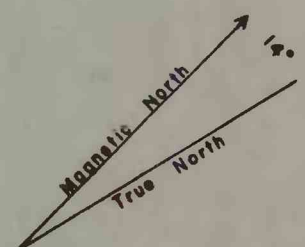
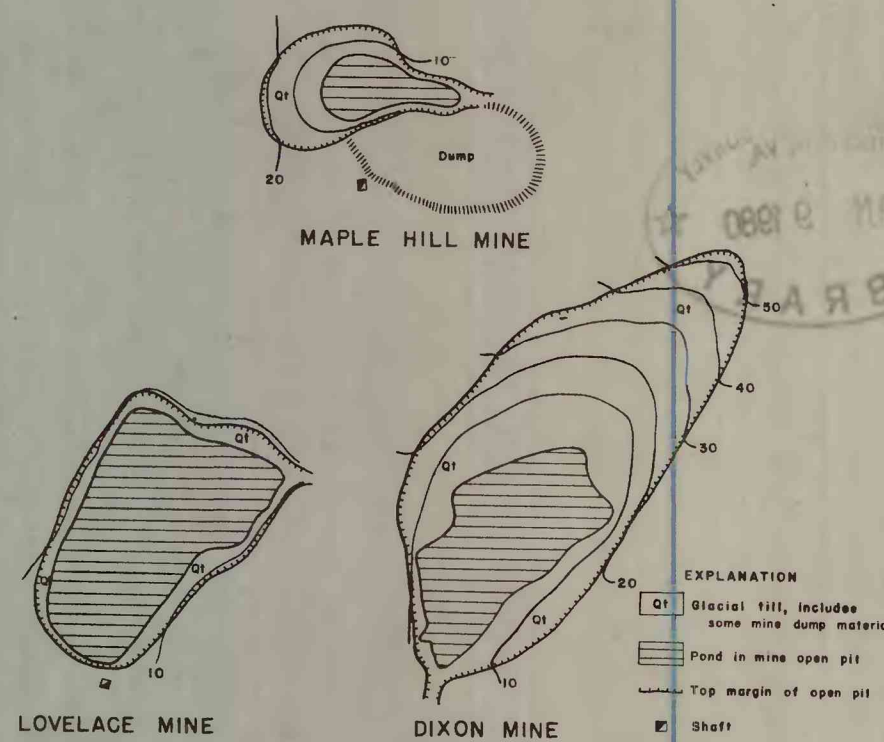


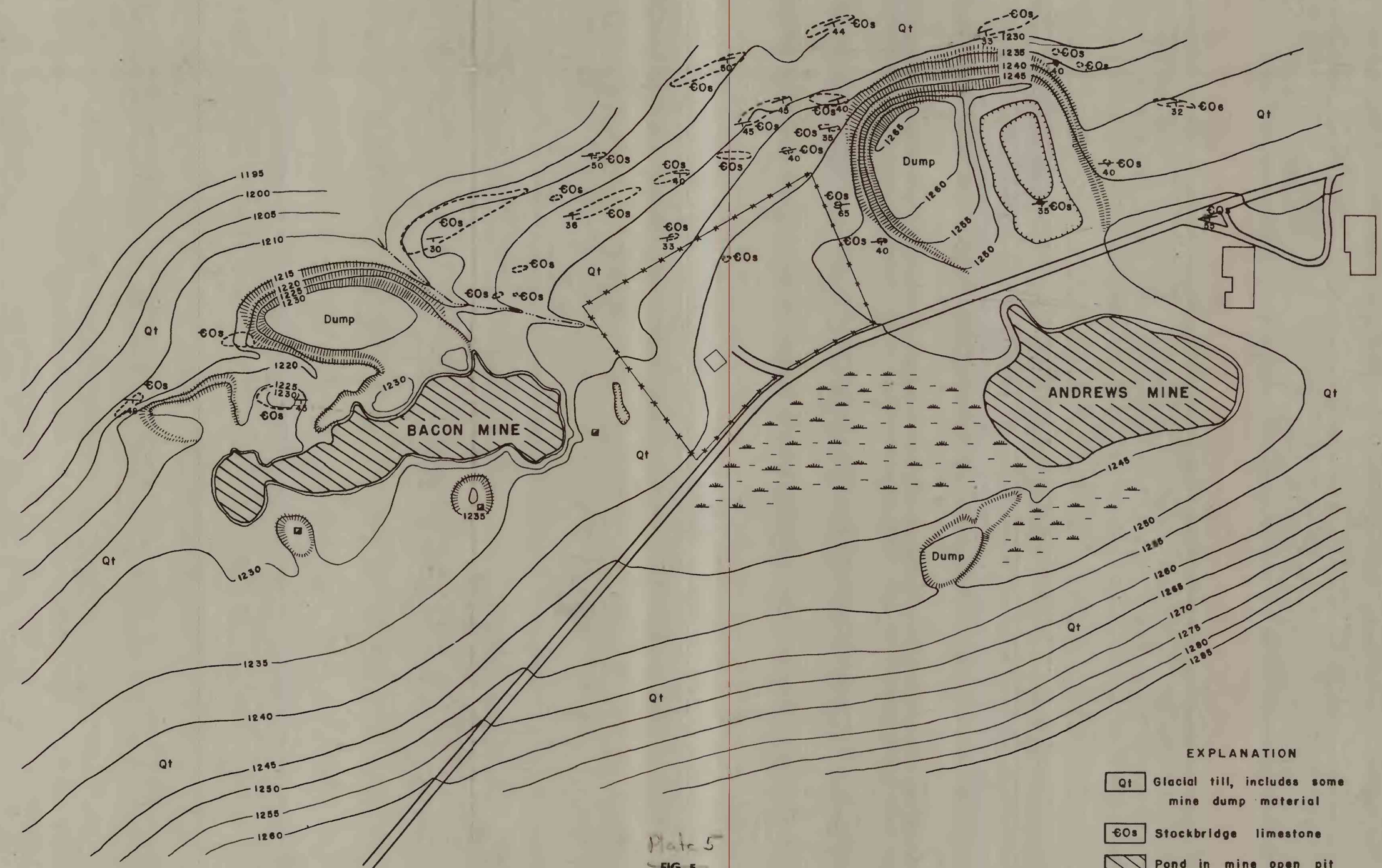
Plate 4
FIGURE 4.

By N. E. Chute and W. B. Allen, Aug. 1943



SKETCH MAPS OF ABANDONED BROWN IRON ORE MINES BERKSHIRE CO., MASS.
Scale
0 50 100 150 200 250 Feet
Contour interval 10'
Datum is surface of pond in pit

Plate 8
FIGURE 2



TOPOGRAPHIC AND GEOLOGIC MAP OF THE BACON AND ANDREWS BROWN IRON ORE MINES AND ADJACENT AREAS, BERKSHIRE CO., MASS.

Scale
0 100 200 300 400 500 Feet
Contour interval 5 feet
Datum is approximately mean sea level

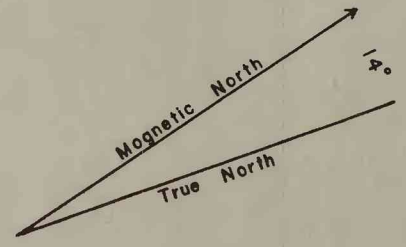
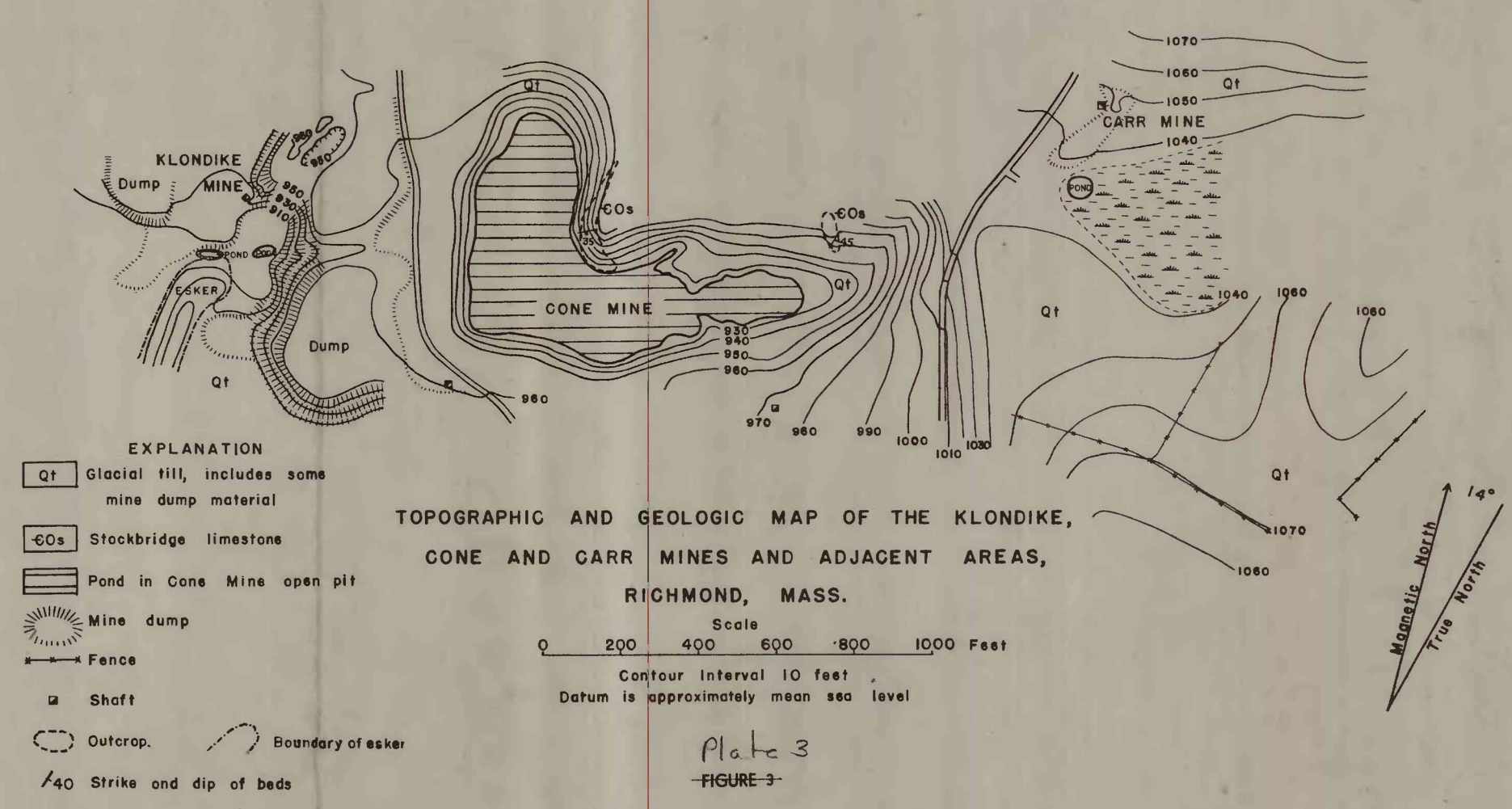


Plate 5
FIG. 5

KEY TO MINES AND PROSPECTS

1. Bliss
2. Bennett
3. Jagger
4. Colby
5. Shaker
6. Branch
7. Andrews
8. Bacon
9. Truman Andrews
10. Lovelace
11. Belden
12. Warden
13. Cheever
14. Dixon
15. Cook
16. Carr
17. Cone
18. Klondike
19. Goodrich
20. Leet
21. Hudson
22. Potter
23. Maple Hill
24. Tremper
25. Spurr



TOPOGRAPHIC AND GEOLOGIC MAP OF THE KLONDIKE, CONE AND CARR MINES AND ADJACENT AREAS, RICHMOND, MASS.

Scale
0 200 400 600 800 1000 Feet
Contour interval 10 feet
Datum is approximately mean sea level

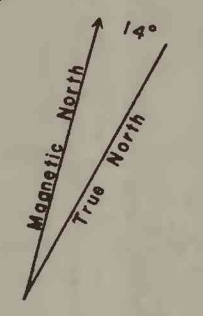


Plate 3
FIGURE 3

